

Congratulations on your purchase of a Historical Collection Dollhouse. Your dollhouse has been precision made in Vermont with meticulous care by our craftpeople using only the finest quality materials.

This dollhouse will last for years, even generations, if proper care and attention is given during assembly. Take your time during assembly and be sure to read the instructions completely before you proceed.

Parts List: (sizes listed are for identification purposes only)

- (1) Base Floor: (3/8) 47 7/8 x 23 7/8, Entryway Cutout
- (1) Middle Floor: (3/8) 47 7/8 x 23 7/8, Stairway Cutout
- (1) Upper Floor: (3/8) 43 x 23 1/4, Stairway Cutout
- (1) Tower Ceiling: (3/8) 12 19/32 x 12 19/32, Bev.
- (1) Entryway Floor: (3/8) 11 x 9
- (1) Right Roof: (3/8) 23 1/2 x 17 1/4, Bev.
- (1) Bay Left Roof: (3/8) 15 5/8 x 17 1/4, Bev.
- (1) Front Roof: (3/8) 23 7/8 x 17 1/4, Bev., Dormer Cutout
- (1) Left Roof: (3/8) 7 7/8 x 17 1/4, Bev.
- (1) Top Roof: (3/8) 23 7/8 x 7 7/8
- (1) Corner Roof: (3/8) 6 1/8 Triangle, Bev.
- (1) Dormer Front: (3/8) (10+1/2) x 8, Window
- (1) Dormer Side Right: (3/8) 3 1/4 tall, 2 top
- (1) Dormer Side Left: (3/8) 3 1/4 tall, 2 top
- (1) Left Dormer Roof: (3/8) 9 5/16 x 7 top, Bev.
- (1) Right Dormer Roof: (3/8) 9 5/16 x 7 top, Bev.
- (2) Lower Tower Roof Face: (3/8) 2 x 5 9/16 Base, Bev.
- (1) Lower Tower Roof Face: (3/8) 2 x 5 9/16 Base, Bev., right snip
- (1) Lower Tower Roof Face: (3/8) 2 x 5 9/16 Base, Bev., left snip
- (3) Lower Tower Roof Corner: (3/8) 2 x 4 9/16 Base, Bev 45°
- (1) Lower Tower Roof Corner: (3/8) 1 3/4 wide x 4 9/16 Base, Bev
- (4) Upper Tower Roof Face: (3/8) 13 3/8 x 4 9/16 Base, Bev²
- (4) Upper Tower Roof Corner: (3/8) 13 3/8 x 3 9/16 Base, Bev²
- (1) Bay Gable Triangle: (3/8) 14 tall x 16 Base, Window
- (1) Attic Divider: (3/8) 14 tall, Door
- (1) Attic Divider: (3/8) 14 tall, Wide Door
- (3) Divider: (3/8) 10 x 15 1/2, Door
- (1) Divider: (3/8) 10 x 15 1/4, Big Cutout
- (1) Divider: (3/8) 10 x 9 3/8, Blank
- (1) Divider: (3/8) 10 x 9 3/8, Door 3 1/16
- (1) Divider: (3/8) 10 x 9 3/8, Door 5 1/16
- (1) Divider: (3/8) 10 x 6 1/8, Door
- (1) Divider: (3/8) 10 x 5 7/8, Blank
- (1) Divider: (3/8) 10 x 5 7/8, Door
- (2) Divider: (3/8) 10 x 2 5/16
- (1) Kneewall: (3/4 Pine) 20 1/2
- (1) Kneewall: (3/4 Pine) 8 1/4
- (1) Kneewall: (3/4 Pine) 5 1/4, Mitered

Foundations:

- (1) Foundation: (3/8) 43 3/4 x 2 5/8
- (1) Foundation: (3/8) 22 17/32 x 2 5/8
- (2) Foundation: (3/8) 20 1/8 x 2 5/8
- (2) Foundation: (3/8) 1 3/4 x 2 5/8
- (1) Foundation: (3/8) 19 5/8 x 2 5/8, Bev.
- (1) Foundation: (3/8) 3 15/16 x 2 5/8, Bev.
- (1) Foundation: (3/8) 9 9/16 x 2 5/8, Bev.
- (1) Foundation: (3/8) 2 5/8 x 2 3/32 Edge, Bev.
- (1) Foundation: (3/8) 3 11/16 x 2 5/8, Bev.
- (1) Foundation: (3/8) 4 11/16 x 2 5/8, Bev.
- (2) Foundation: (3/8) 2 5/8 x 3 7/16 Edge, Bev.
- (2) Foundation: (3/8) 10 3/8 x 2 5/8, Bev.
- (1) Foundation: (3/8) 6 13/16 x 2 5/8, Bev.
- (1) Foundation: (3/8) 5 7/8 x 2 5/8, Bev.
- (1) Foundation: (3/8) 11 x 2 5/8
- (2) Entry Foundation: (3/8) 11 x 1 1/8
- (2) Entry Foundation: (3/8) 8 1/4 x 1 1/8

Tower Walls (Smooth):

- (3) Tower Corner: 10 x 4 5/32, L&R Bev, Window
- (2) Tower Front: 10 x 5 1/16, L&R Bev, Window
- (1) Right Cutout: 10 x 5 1/16, L&R Bev, Mitered
- (1) Left Cutout: 10 x 5 1/16, L&R Bev, Mitered
- (1) Center: 1 5/16 x 4 5/32 L&R Bev,

2nd Floor Wall (Milled to 3 5/8):

- (1) Right Side Back: 10 tall x 11 1/2, Blank
- (1) Alcove Front: 7 5/16 tall x 7, Window
- (1) Alcove Top Front: 1 1/8 x 7
- (1) Alcove Bottom Front: 1 1/2 x 7
- (2) Alcove Wall: 10 x 1 7/8, Blank
- (1) Right Side Front: 10 x 1 7/16, L Bev, Blank
- (3) Corner: 10 x 4 5/32, L&R Bev, Window
- (1) Bay Front: 10 x 10 1/16, L&R Bev, Window
- (1) Bay Left: 10 x 4 7/16, R Bev, Blank
- (1) Front: 10 x 16 3/16, L Bev, Windows
- (1) Tower Right: 10 x 4 11/32, // Bev, Window.
- (1) Tower Left: 10 x 4 11/32, \ Bev, Window
- (2) Tower Front: 10 x 5 1/16, L&R Bev, Window
- (1) Left Back: 10 x 8 1/16, R Bev, Door

1st Floor Wall (Milled):

- (1) Right Side Back: 10 x 11 1/2, Blank
- (2) Alcove Wall: 10 x 1 7/8, Blank
- (1) Alcove Front: 9 15/16 x 7, Double Windows
- (1) Right Side Front: 10 x 1 7/16, L Bev, Blank
- (2) Corner: 10 x 4 5/32, L&R Bev, Window
- (1) Bay Front: 10 x 10 1/16, L&R Bev, Window
- (1) Bay Left: 10 x 4 7/16, R Bev, Blank
- (1) Entryway Front: 11 1/2 x 16 3/16, Inlet, L. Bev, Wide Door
- (1) Tower Right: 10 x 5 3/8, R Bev., Window
- (1) Tower Left: 10 x 5 3/8, L Bev., Window
- (1) Tower Front: 10 x 11 9/32, Window
- (1) Left Back: 10 x 8 1/16, R Bev., Blank

Alcove:

- (2) Floor: (3/8) 1 7/8 x 7
- (1) Ceiling: (3/8) 1 3/4 x 8, Bev.
- (1) Roof: (1/4) 8 3/4 x 2 7/8, Bev.
- (2) Triangle: (3/8) 1 3/4 Base x 5/8 tall

Entryway Steps (3/4 Pine):

- (1) 11 x 1 1/2
- (1) 11 x 1/2
- (1) 4 x 2
- (1) 4 x 1/2
- (1) 6 x 3
- (1) 6 x 1 1/2
- (2) Buttresses: 3 1/4 x 3 1/8, Miter

Hardware:

- (6) Hinges: 1
- (24) Screws: 3/8 #2

This instruction is for the Queen Anne Box 1 (the shell)
Instructions for Box 2 parts are in Box 2 (finishing materials)

Do not skip steps, follow the instructions in order.

Arrange pieces in groups ready for assembly. Follow the instructions and assemble enough in a dry run to be sure you know ahead of time when and how each part fits. Always be sure of the parts orientation before gluing. Check all parts and packs against the parts list before beginning construction to identify and label the parts and to make sure you have everything. Always test fit (no glue) parts before final assembly. Wood is a moisture-active material that will change size and shape with changes in moisture content. Parts that were flat and straight here may not be flat there, but most parts can be coaxed into position with weights and plenty of tape.

Make sure everything is straight and flat as the glue dries... That's the shape that will be permanent.

Many parts should be shingled as you go. This instruction calls for shingles at the right times to get the look of the original. If you have the shell only, or if you plan a different exterior look, plan ahead for the easiest and best results. If you have the complete Queen Anne, the shingles and shingling information with diagrams are in box 2.

Painting: Look for the Paintbrush symbol in the margins. This lets you know when our assembly pro paints before assembly at that step.

Important!

You must paint the clapboard surface before sanding or any other work is done to it. The first coat of paint seals and binds together the wood's grain, which protects the surface from the edge of the sandpaper tearing or lifting the wood. After the first coat of paint is dry, sand carefully with 320 grit sandpaper one clapboard course at a time, then re-paint.

Sometimes a 3rd coat is necessary.

Paint all trim and clapboard walls prior to assembly. Use high quality semi-gloss latex enamel, sanding between coats with 320 grit silicone carbide sandpaper. Avoid old gloppy paint and poor quality paint brushes (use a bristle brush). Do not paint surfaces to be glued. Fix any rough edges or splinters before gluing.

Use generous amounts of glue. Always wipe off excess glue immediately.

Make all joints flush. Keep surfaces and edges square.

A large, clutter-free, well lighted work area is most helpful during assembly, and a flat work surface is essential.

Supplies:

White glue	Sandpaper
Masking tape	Pencil
Rubber bands	Ruler
Utility knife	

Don't be stingy with glue or tape

Read the instructions carefully, look at the illustrations. With the parts in your hands, think the assembly through before you proceed.

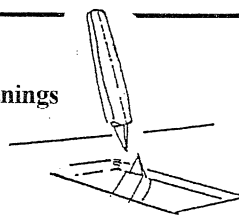


(Rear View)

Assembling the Shell:

Square the corners of the windows, door, entryway opening, and stairway openings (Illustration #1).

Illustration #1
Square the Openings



The Entryway, Foundation, and Deck:

Preview: In this section you will assemble the foundation and attach it to the bottom of the Base Floor. The foundation is flush ("flush" means 'forming a continuous, unbroken surface') at the back edge and spaced evenly $\pm 7/8"$ from the edges of the front and sides. The foundation parts will be handled in groups.

- 1. Glue and nail the $43\frac{3}{4}"$ Foundation to the bottom of the Base Floor, flush at the back edge, and centered ($\sim 7/8"$) side to side (Illustration #2).
- 2. Assemble the Entryway Foundation set (Illustration #3). The 11" Foundations overlap the $8\frac{1}{4}"$ foundations.
- 3. Glue and nail the Entryway Deck to the Entryway Foundation (Illustration #4).
- 4. Lay the Base Floor upside-down on a truly flat work surface. Without glue position the Entryway Deck in the Entryway opening.
- 5. Glue, nail, and tape the 11" and the $20\frac{1}{8}"$ Foundations to the Floor, to the Back Foundation, and to each other (Illustration #5). Be careful not to get glue on the Deck...it will be moved later (see section 9).

Illustration #2

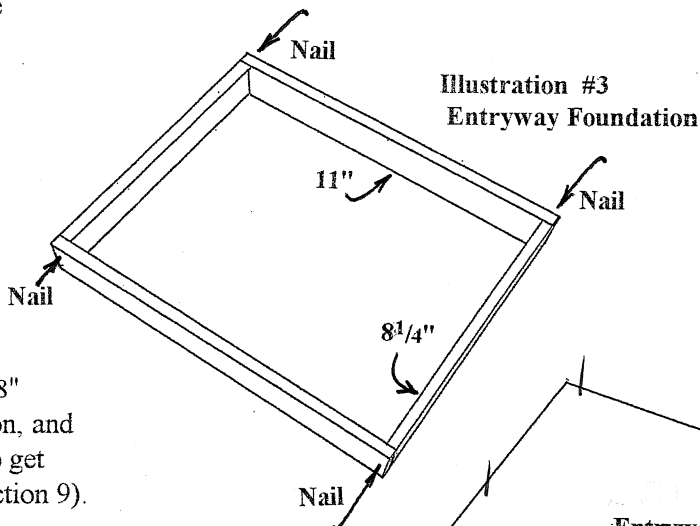
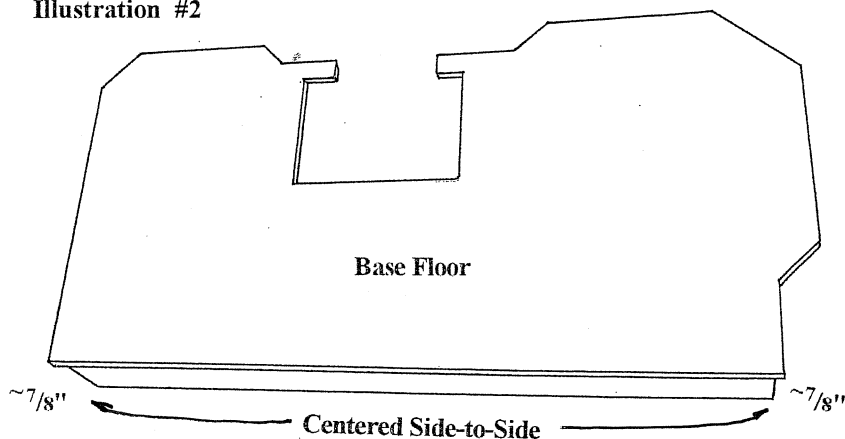


Illustration #3
Entryway Foundation

Illustration #4
Entryway Deck

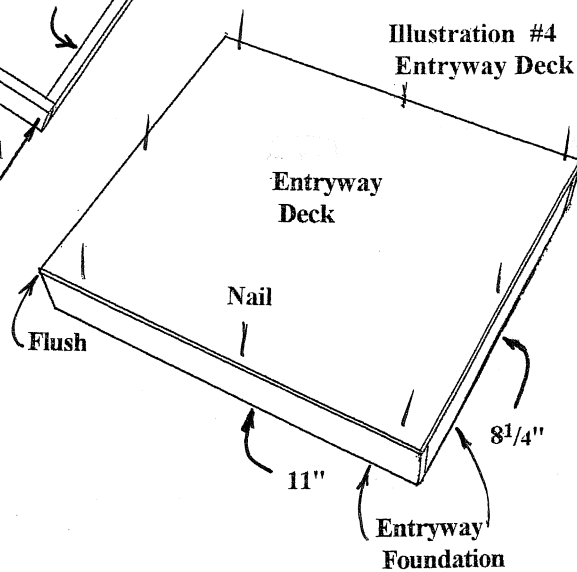
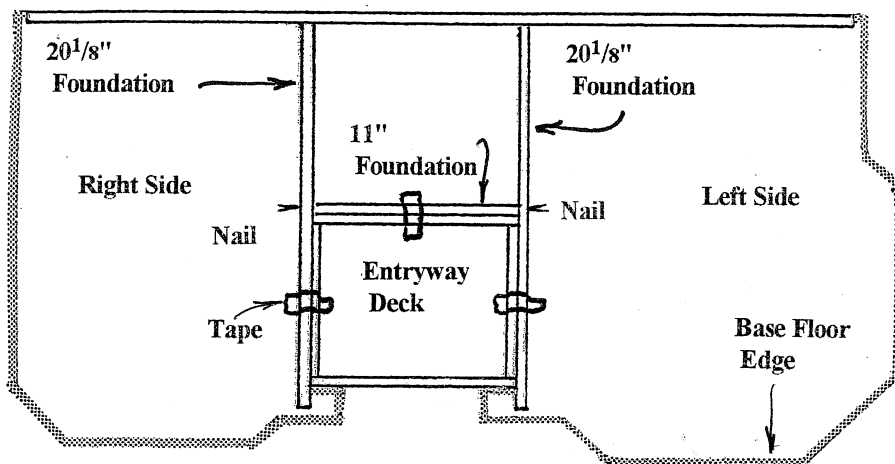
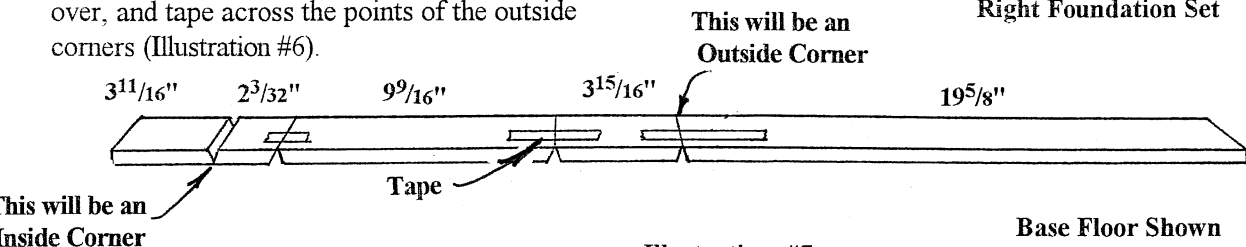


Illustration #5
Base Floor Shown
from the Bottom



- 6. Tape together the inside corners of the Right Foundation set. Turn the foundation pieces over, and tape across the points of the outside corners (Illustration #6).

Illustration #6
Right Foundation Set



Test the Right Foundation set on the Base Floor. Line up the 19 5/8" piece with the Back Foundation (the 19 5/8" Foundation overlaps the Back Foundation). Use the 1 3/4" Foundation to locate the front corner.

Now that you see how the Right Foundation set fits on the Base Floor, take the set off then do it again this time using glue and tape see Illustration #7 (Don't glue the 1 3/4" Foundation in this temporary location).

- 7. Tape together the inside corners of the Left Foundation set. Turn the foundation pieces over, and tape across the points of the outside corners (Illustration #8).

Illustration #7

Base Floor Shown Up-Side-Down

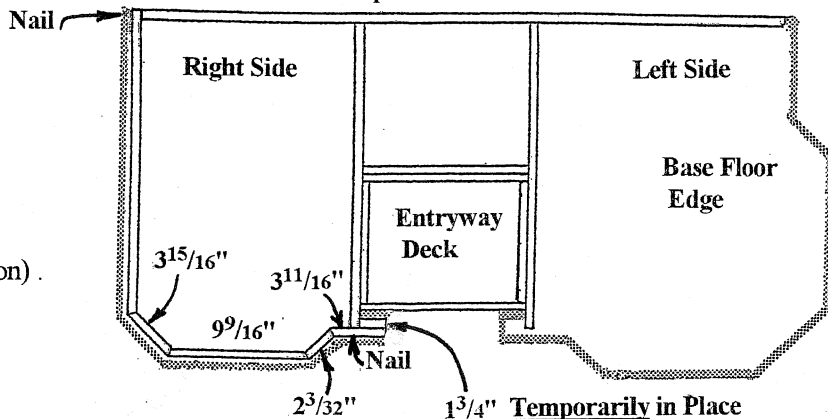
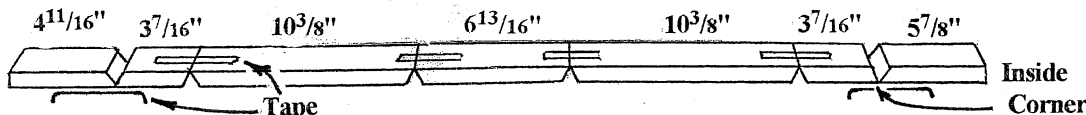


Illustration #8

Left Foundation Set



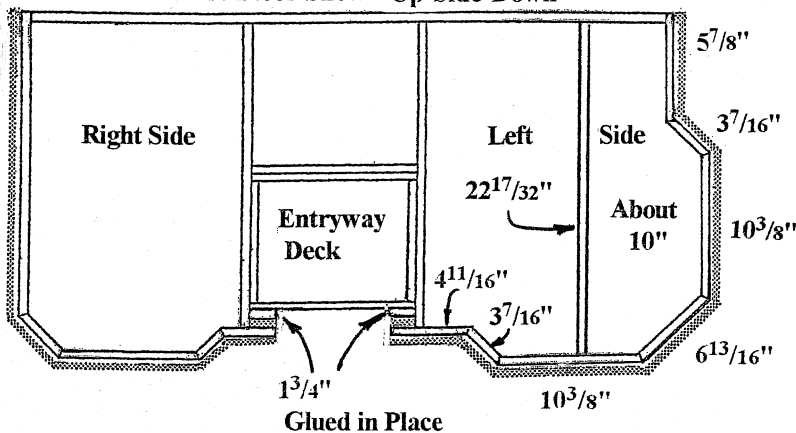
Test the Left Foundation set on the Base Floor. Line up the 5 7/8" piece with the Back Foundation (the 5 7/8" Foundation overlaps the Back foundation). Without glue, use the 1 3/4" Foundation to locate the front corner.

Glue the 22 17/32" Foundation to the Base Floor and Back Foundation (Illustration #9). Re-Do the Left Foundation set using glue and tape.

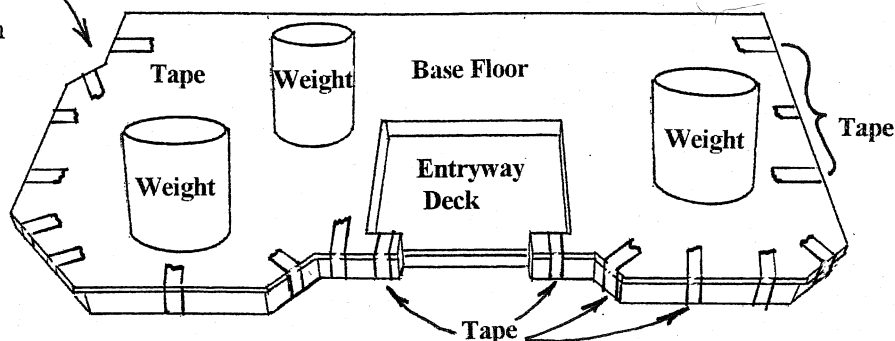
- 8. Glue and tape the 1 3/4" Foundations to the Base Floor and the 20 1/8" Foundations, touching but not glued to the Entryway Deck (Illustration #9).

- 9. Spread glue on the Foundations that surround the Entryway set. Turn the Base Floor assembly over and push the Entryway set down onto a flat work surface. This should leave a 1 1/2" space above the Entryway Deck. Check with the Entryway Front Wall, the inlet must exactly fit on the left and the right.

Illustration #9 Base Floor Shown Up-Side-Down



- 10. Put weight on the Base/Foundation assembly to make it lay **absolutely flat** on a flat worksurface as the glue dries. Getting the assembly flat is necessary for a straight house!



Review: The joints are tight, the spacing is even and everything is flat.

Housebody
(The First Floor Walls):


Preview: In this section, you will glue together the First Story Walls and glue them to the Base Floor. The First Story Walls have a clapboard profile from the bottom to the top.


When you are done, you will have all the Walls glued together and glued to the Base Floor. The top of the Walls will be taped (no glue) to the Third Floor (the Third Floor panel is used at this point only as a wall guide to keep them straight and lined up while the glue dries). As you make the final adjustments to the Walls to get them to line up with the Third Floor, the glue still has to have some softness to it...that is why all the organizing of the Walls and all the preparation is done before anything is glued, so that the last step, the one when glue goes on to wood, can happen fast and sure.

The following order of assembly is the routine you'll go through so that all the pieces will be ready at the right time.

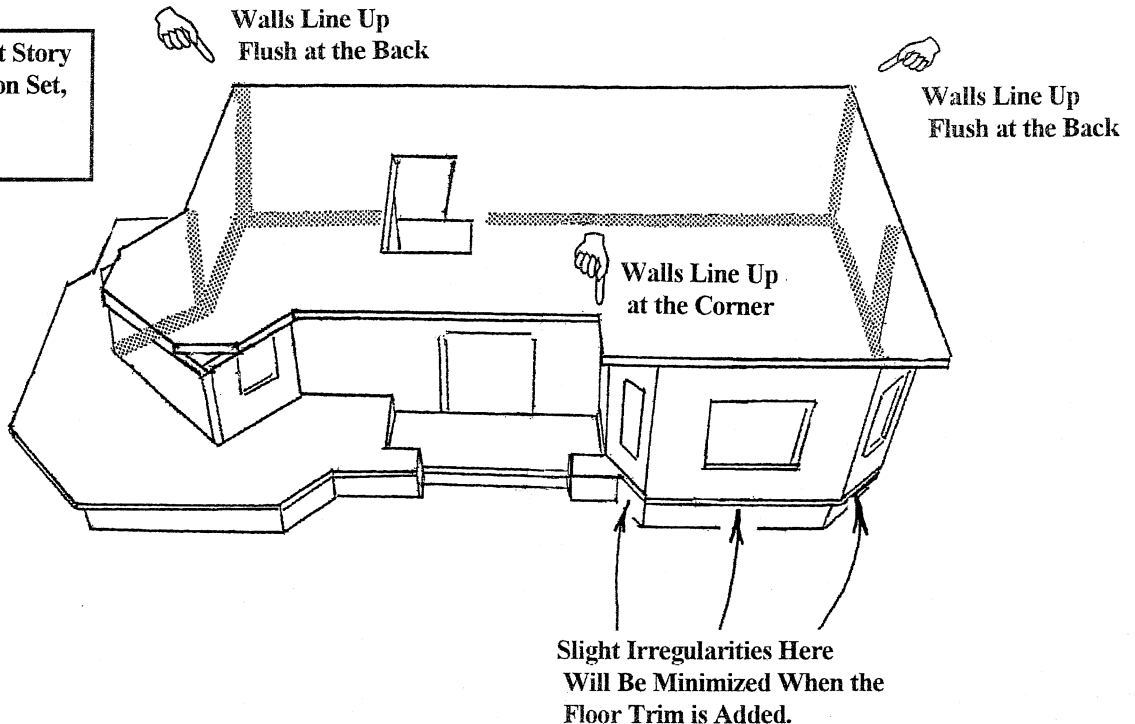
Order of Assembly:

- Layout the wall location on the Base Floor
- Paint the porch floor
- Glue the Walls in place
- Tape the Third Floor and Dividers in place to line up the Walls as the glue dries

Critical Points that must be exactly right are emphasized by the symbol . Make sure these points are perfect (I have taken wall sections apart, scraped glue off of all the parts, and started over again because I didn't get the critical points right.).

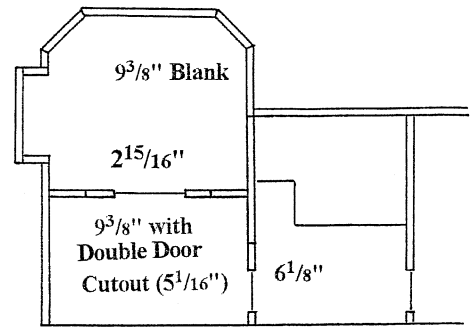
 Pay Careful Attention
to the Critical Points
(sections 18 A & B, 19, 20A & 15)

This Illustration Shows the First Story Walls, the Base Floor/Foundation Set, and the Third Floor Panel.
**Note the Critical Points*

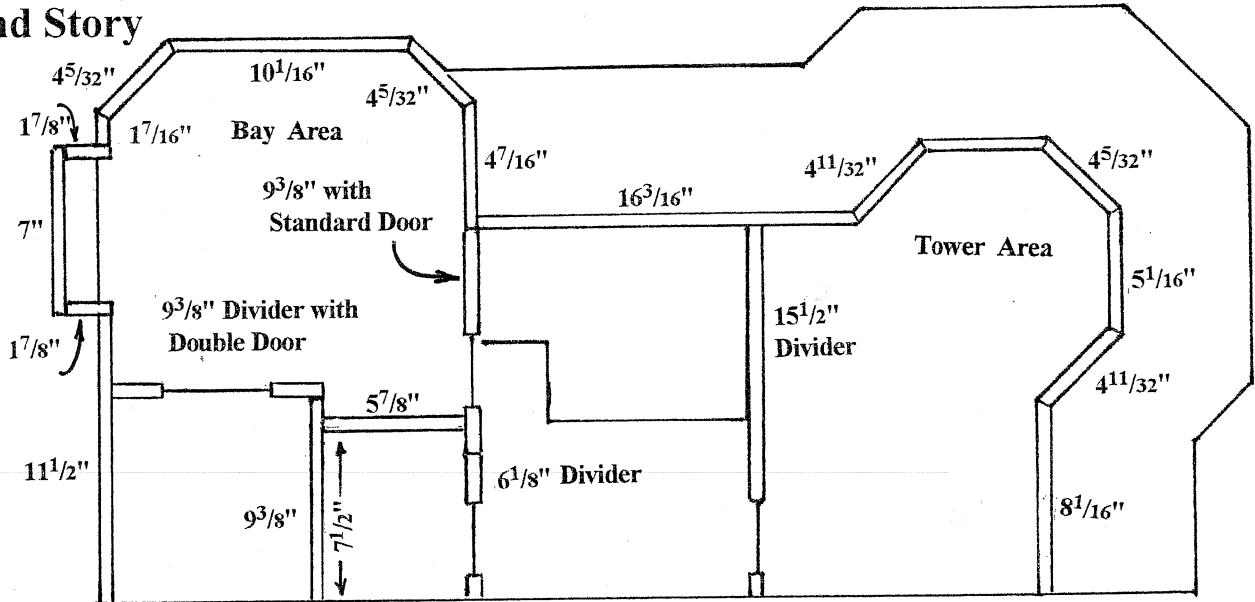


Second Floor Optional Layout

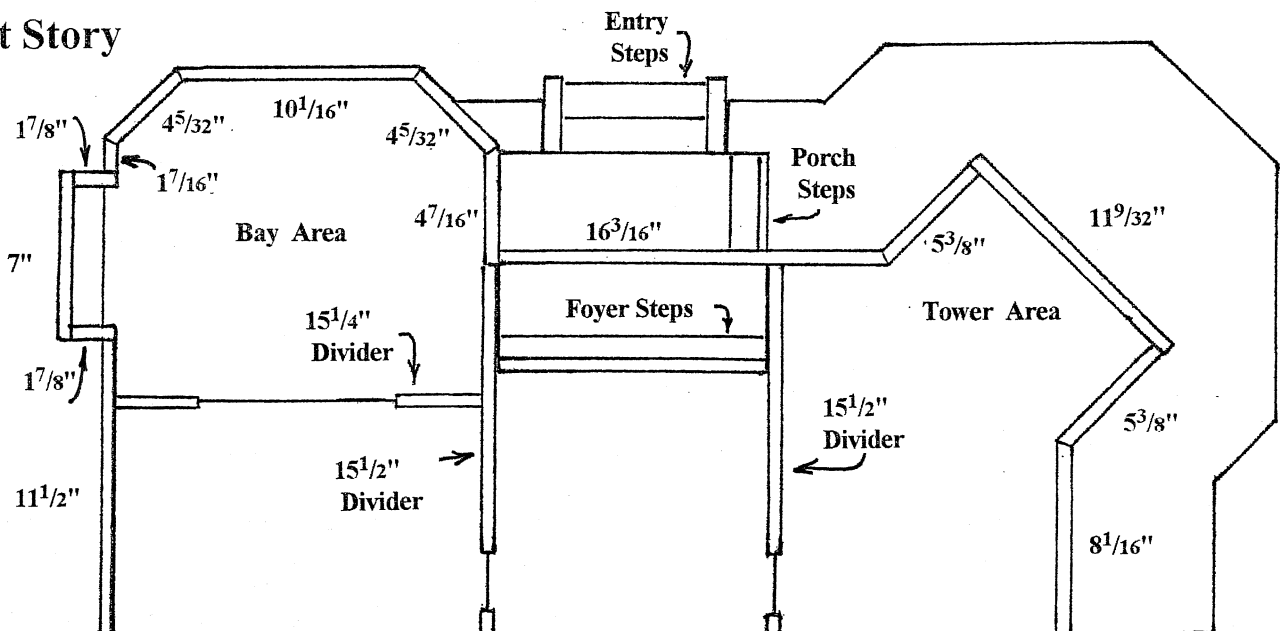
1st and 2nd Floor Layout



Second Story



First Story



Painting the Porch:

Paint the Porch Floors and Ceiling, as instructed in steps 14, 21 & 25. Each of these can be done at the same time as step 14. After tracing the interior perimeter of the walls, follow the marking and tracing operations in step #21, then paint all the porch floors and ceiling now. Be sure to trace and paint the entryway deck and the foundation that encloses it too.

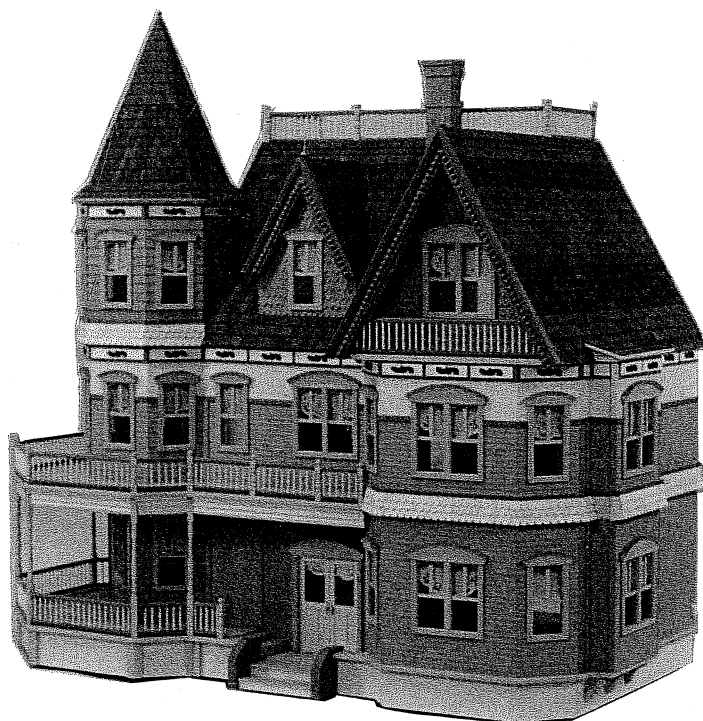
Apply several coats of paint, sanding in between. Let Dry.

You may wish to paint the house foundation now (we use regular paint with anti-skid additive - sand paint).

What to do while you wait for the paint to dry:*

- Draw Shingle Guidelines on the Roofs, Third Floor Tower Walls (pg 14), Tower Roof (pg 15), Alcove Roof, Dormer Front, and the Gable Triangle (pg 16).
- Shingle the Gable Triangle (pg 16).
- Assemble and Shingle the Dormer Body (pg 19).
- Shingle the Tower Upper Roofs (pg 19).
- Paint the Doors, Windows, Facia, Trim, and Turnposts (instructions in box 2).
- Assemble and Paint the Chimney (instructions in box 2).
- Paint and Assemble the Railing sets (instructions in box 2).

* *The components and finishing materials for the Queen Anne are included in box 2 of the complete kit (if this kit was purchased as a "Shell" only, the Finishing Materials must be purchased separately through your Real Good Toys Dealer)*



11. Tape the Walls into Left and Right sets (Illustration #12,#13,#14).

12. Lightly trace the perimeter of the Third Floor onto the Base Floor, lined up at the back and right edges. See Illustration #11 to note the places where the Third Floor perimeter **EXACTLY** locates the First Floor Walls. When you set up the Walls take all the time you need adjusting them to follow the tracing, so that the Walls on each floor will line up as the house is built.

13. Tape a pair of Dividers to the Base Floor flush at the back edge (Illustration #15).

Now is a good time for a helper to handle the Wall sets.

14 Without glue, set up the Walls on the Base Floor following the Third Floor tracing. Trace the inside perimeter of the Wall layout on the Base Floor. Remove the Wall sets and paint the porch floor to within 1/4" of the inside tracing. Several coats with sanding in between may be necessary.

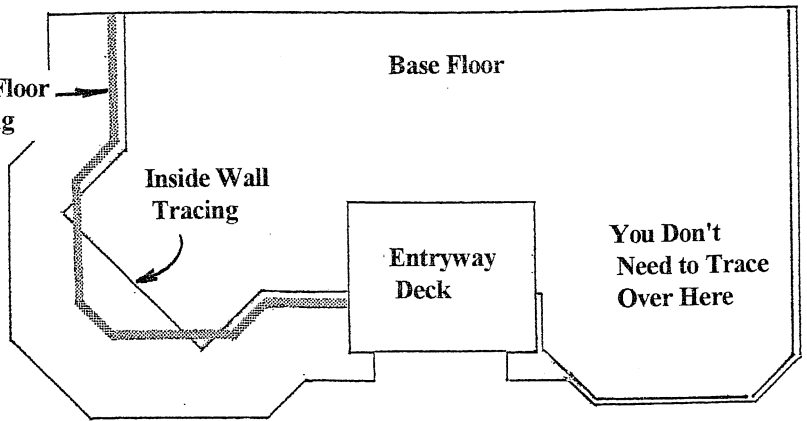


Illustration #12
Left Wall Set

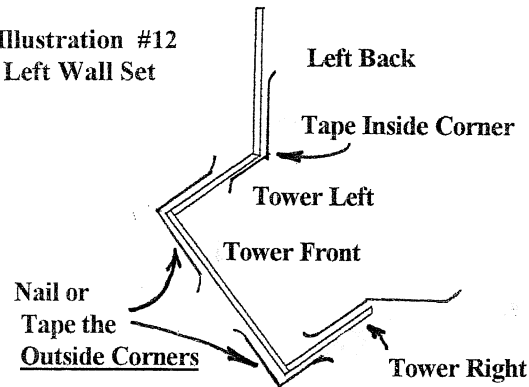


Illustration #13
Right Wall Set

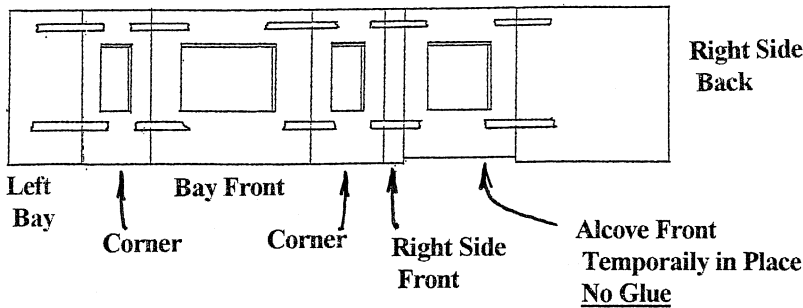


Illustration #14
Right Wall Set

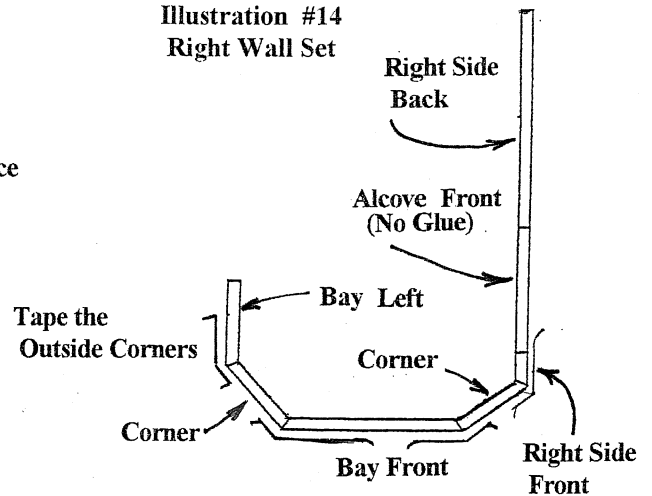
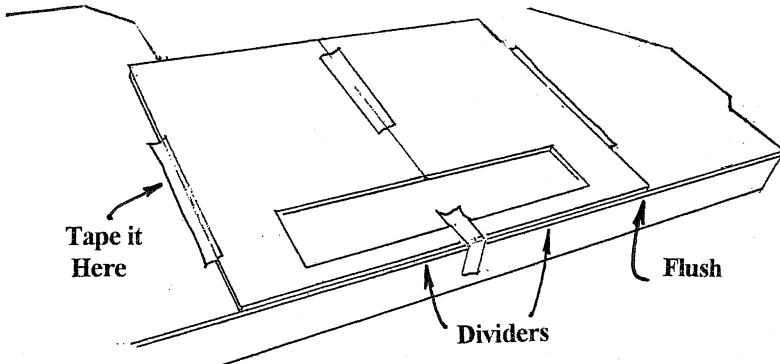


Illustration #15



15. Glue and tape the Entryway Front in place on the Base Floor. The Dividers locate the inside surface. Wedge the 4" Porch Steps in the Entryway cutout to hold the Walls tight (Illustration #16).

16. Start two nails $\frac{3}{16}$ " from the back edge of the inside face of the Bay Left Wall, ready to nail into the Entryway Wall (see Illustration #17).

17. Glue the Right Wall set together and to the Base Floor. The Alcove Front is used here only as a spacer, and will be removed when the alcove is built. Do Not glue the Alcove Front to the other Walls or to the Base Floor.

A. Match up the Entryway Wall and the Bay Left Wall at the top and back edges, then nail this corner (Illustration #17). Check again and make sure it's right.

☞ Flush at the back edge and flush at the top.

B. Tape the back edge of the Right Side Back Wall to the Base floor

☞ exactly flush with the back and right edges of the Base Floor. Use plenty of tape down both the back and the side to really hold the wall in place here.

C. Line up the Walls exactly with the edge of the floor and tape them in place. Check again that everything is lined up, particularly that the Bay Front is parallel across the front, and even with the floor side-to-side (Illustration #18).

Illustration #16

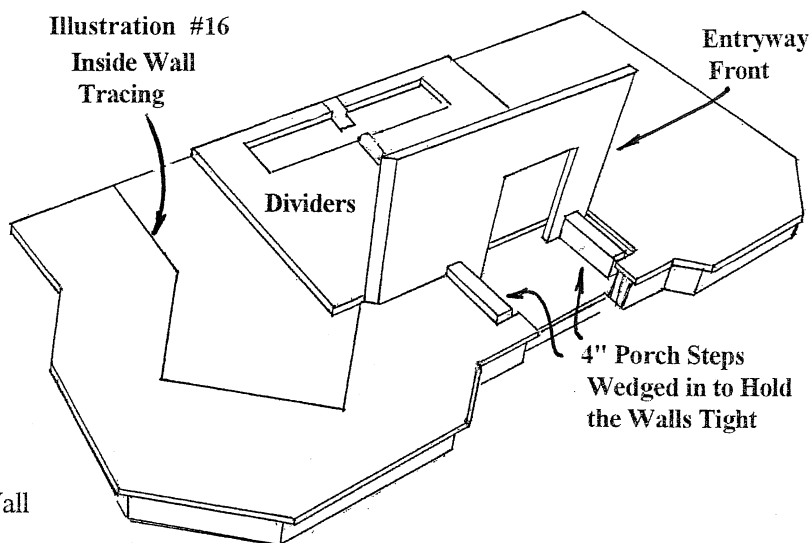


Illustration #17

(Inside View)

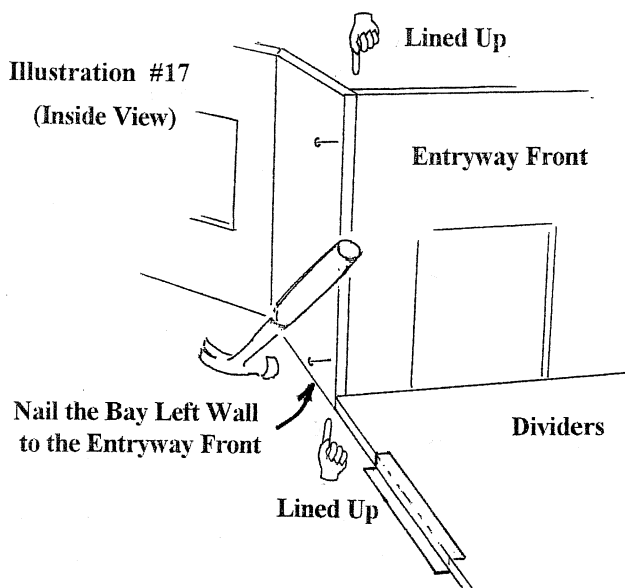
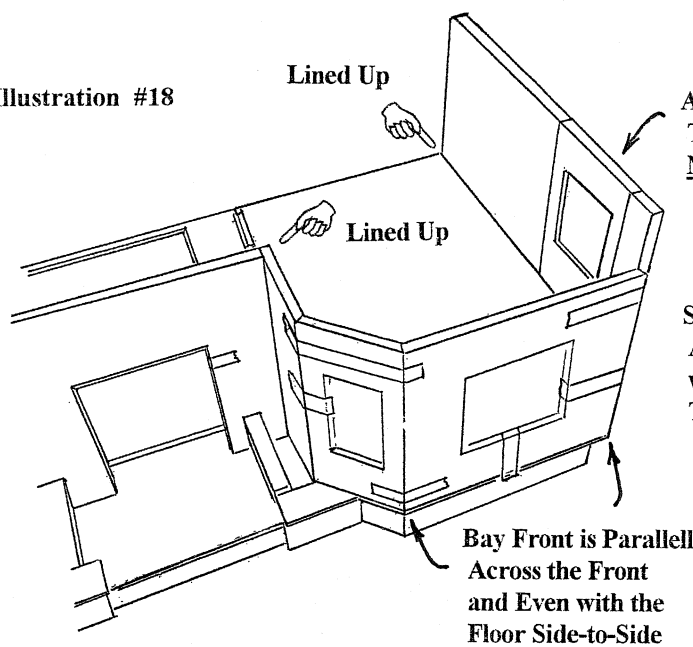


Illustration #18



Alcove Front
Temporarily in Place
No Glue

Slight Irregularities in the fit
Around the Edge of the Floor
will be Minimized when the
Trim goes on.

Pro Tip: Our assembly pro glues and nails the Tower Front to the Tower Left and Tower Right Sides, then checks to make sure they are square before taping on the left back wall.

☐ 18. Glue and tape the Left Wall Set to the Entryway Front and Base Floor,

☞ lined up with the inside wall tracing all the way to the back edge (Illustration #19).

☐ 19. Set the Third Floor on the First Story Walls (without glue).

A. Tape the walls to the Third Floor to hold the top edges in place while the glue to the Base Floor dries (Illustration #20).

☞ Make sure the walls really line up with the edges of the Third Floor, particularly the back edge, and the corner between the Bay Left Wall and the Entryway.

B. Tape Dividers between the Floors along the back edge. Tape around the back edge of the walls to the Dividers to hold the walls square as the glue dries.

C. Tape from the Third Floor around the First Floor/Foundation to hold everything tight as the glue dries (Illustration #20).

D. Set the Base Floor on a truly flat surface, add weight to Third Floor, Let the glue dry.

Review: The walls are all in place, tight, straight, and lined up at the back edges and at the Entryway corner.

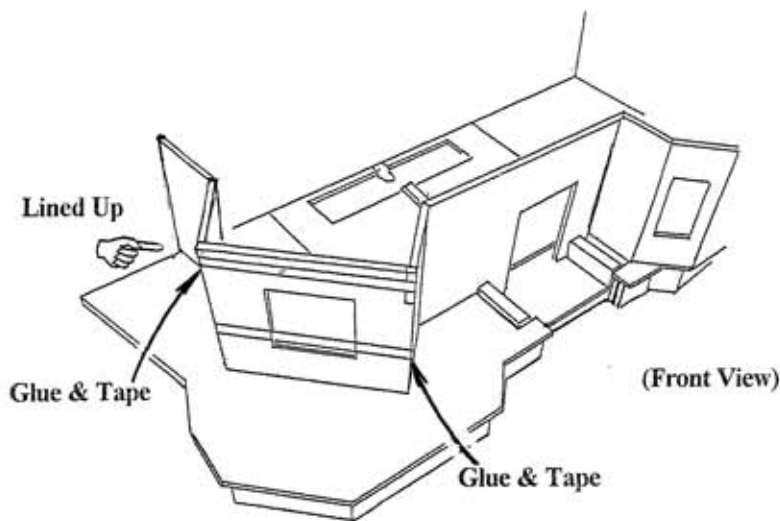


Illustration #19

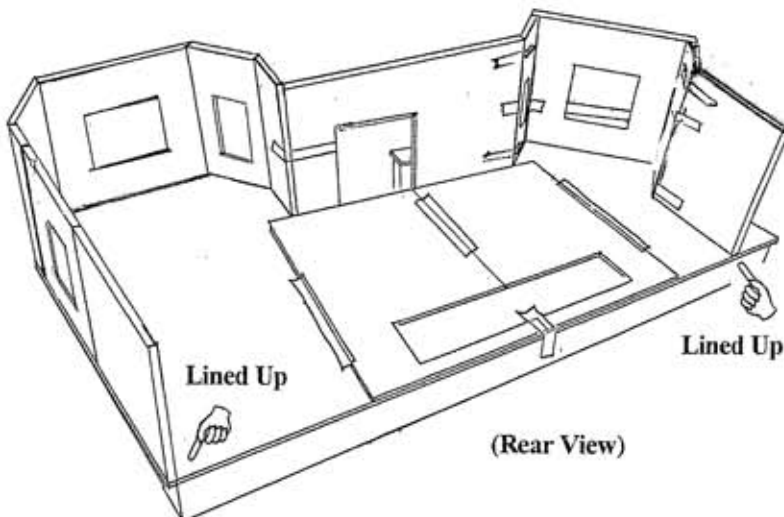
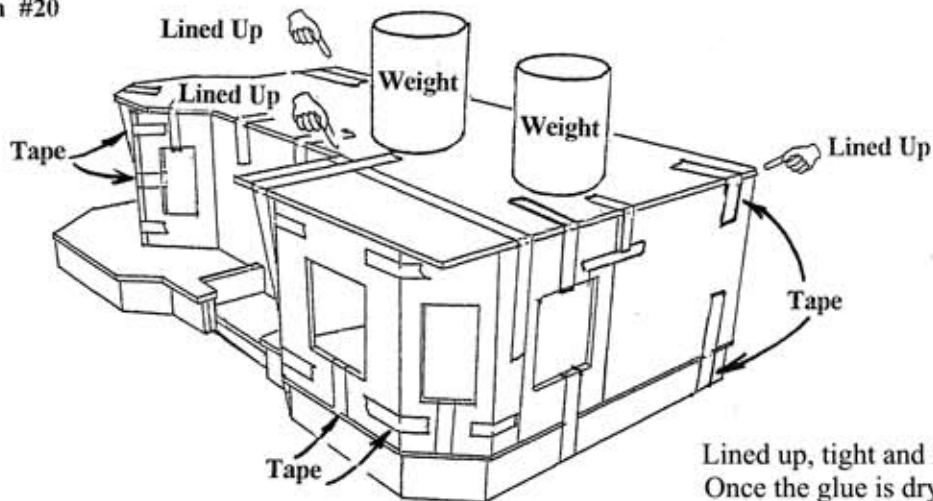


Illustration #20



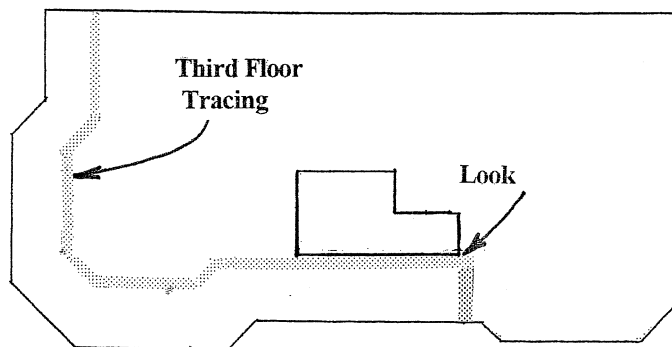
Housebody

(The Second Floor and Second Story Walls):

Preview: In this section, you will build the Second Story. Pay attention to the same critical points that you focused on in building the First Story when attaching the floor *and* when attaching the walls!

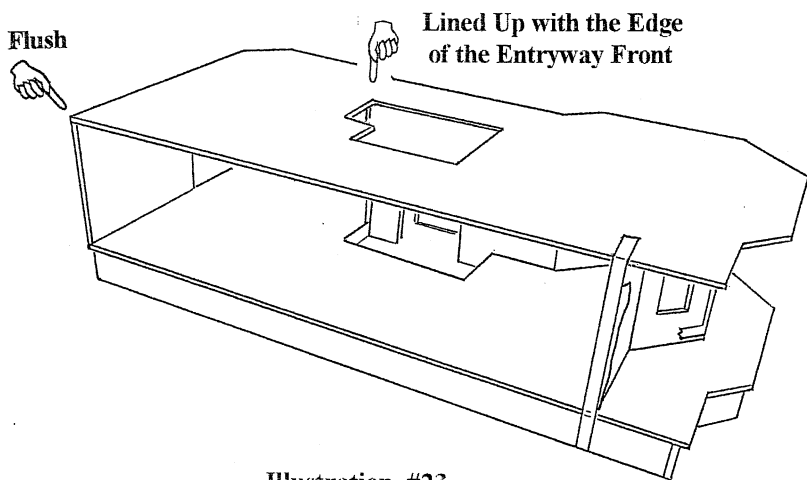
20. Lightly trace the perimeter of the Third Floor onto the bottom and the top of the Second Floor, lined up at the back and right edges. Use this tracing as a guide for locating and adjusting the walls (Illustration #21).


Illustration #21



21. Set the Second Floor on top of the First Story Walls, flush at the rear and right edges, and with the stair cutout exactly lined up with the inside of the Entryway Front (Illustration #22).

Illustration #22



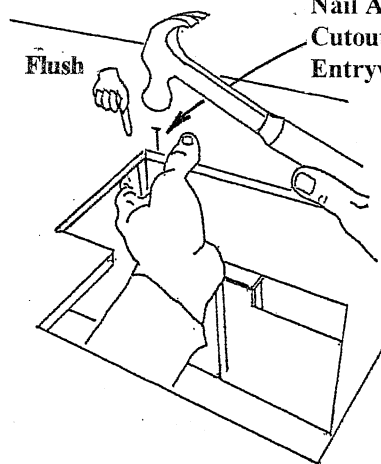
 The corner of the cutout lines up with the joint between the Entryway Front and the Bay Left Side.

Use the Third Floor tracing to locate the Tower Sides, and the Left Rear Wall.

Trace the inside perimeter of the Wall layout on the bottom of the Second Floor. Remove the Floor, and paint the porch ceiling to within 1/4" of the inside tracing.

22. Replace the Second Floor; this time glue and nail the Floor in place. Nail along the cutout into the Entryway Wall to make sure this fit stays perfect as the glue dries (Illustration #23).

Illustration #23
Nail Along the Cutout into the Entryway Front



Use weights and tape for a tight fit (Illustration #20). Check the fit of the Entryway Wall and cutout.

Remember: When you set up the Walls be extra careful adjusting the Walls to follow the tracing, so that the Walls on each floor will line up as the house is built.

Look from the front...Look from the back... use Dividers as squares...Make it right as you go along.

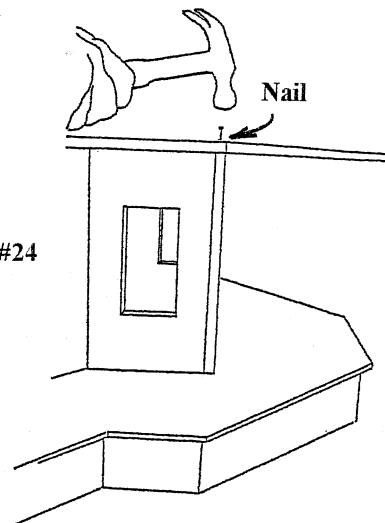
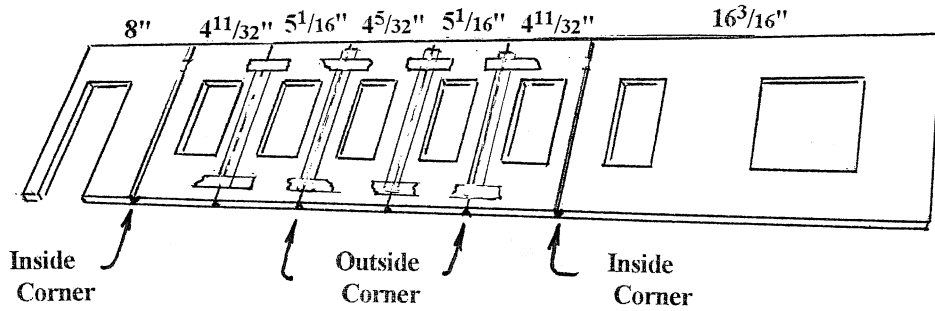


Illustration #24

23. Tape the Walls into Left and Right sets
(Illustration #25,#26).

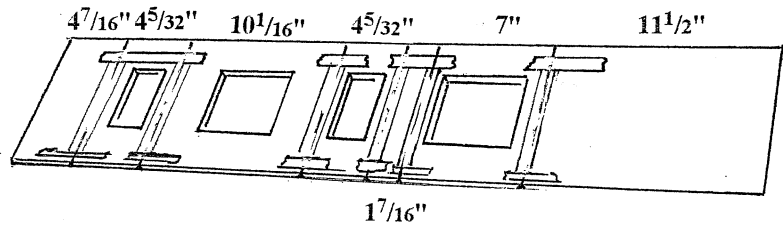
Illustration #25
Left Wall Set



24. Tape a pair of Dividers to the Second Floor flush at the back edge as in illustrations #28 and #29. Leave the edge of the stair hole showing so you can set the walls to this critical point.

Illustration #26
Right Wall Set

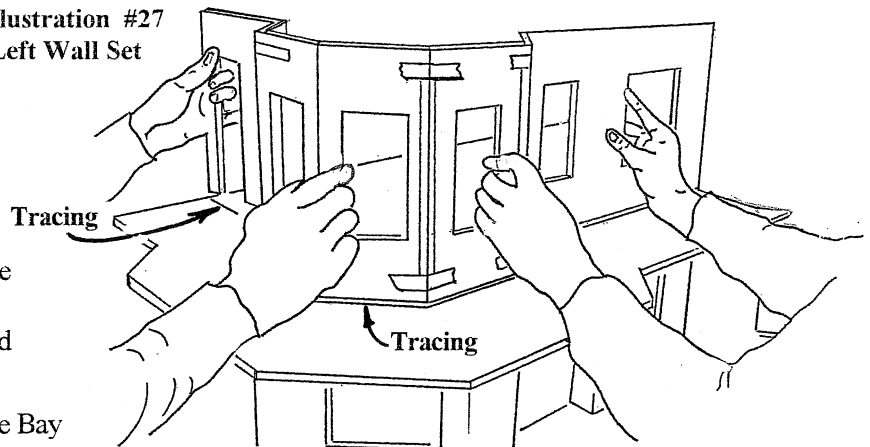
Alcove Front
Temporarily in Place
No Glue



Now is a good time for a helper to handle the Second Floor Wall sets.

25. Without glue, set up the Walls on the Second Floor following the Third Floor tracing. Trace the inside perimeter of the Wall layout on the Second Floor. Remove the Wall sets and paint the porch floor to within 1/4" of the inside tracing.

Illustration #27
Left Wall Set



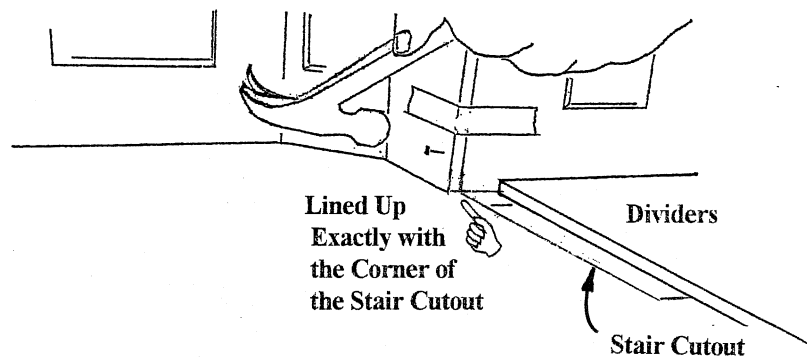
26. Glue and tape the Left Wall set together, and to the Second Floor lined up with the tracings (Illustration #27).

27. Glue the Right Wall set together and to the Second Floor. Do Not glue the Alcove Wall parts to the Wall set or to the Floor. They are being used only as a spacer.

- A. Match up the Second Story Front Wall and the Bay Left Wall at the back edge, then nail this corner (Illustration #28). Check again and make sure it's right...

☞ Flush at the back edge with the joint between the Front and the Bay Left Walls exactly lined up with the corner of the stair cutout.

Illustration #28



B. Tape the back edge of the Right Side Back Wall to the Second Floor

☞ exactly flush with the back and right edges of the Second Floor. Use plenty of tape down both the back and the side to really hold the wall in place here.

C. Line up the Walls exactly with the edge of the floor and tape them in place. Check again that everything is lined up, particularly that the Bay Front is parallel across the front, and even with the floor side-to-side (Illustration #29 & #30).

☐ 28. Glue and nail the Third Floor in place. Set Dividers between the Floors to make sure the Walls are straight and that the Floors are level.

☞ Make sure the walls really line up with the edges of the Third Floor, particularly the back edge, and the corner between the Bay Left Wall and the Front.

Tape Dividers between the Floors along the back edge. Tape around the back edge of the side walls to the Dividers to hold the side walls square as the glue dries.

Tape from the Third Floor around the First Floor/Foundation to hold everything tight as the glue dries (Illustration #31).

Set the Assembly on a truly flat surface, add weight to Third Floor, Let the glue dry.

Review: The walls are all in place, tight, straight, and lined up at the back edges and at the Front corners.

Illustration #29 Alcove Front (No Glue)

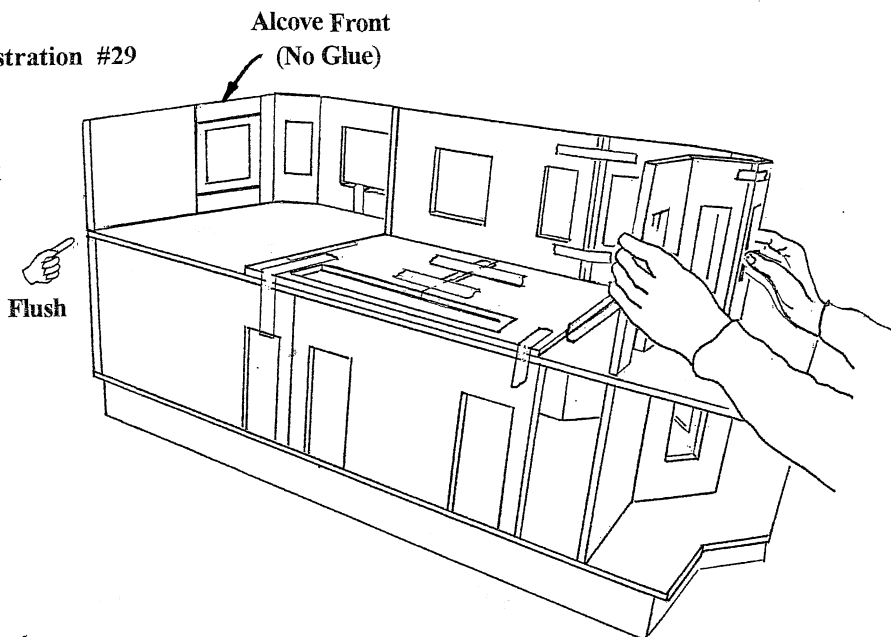
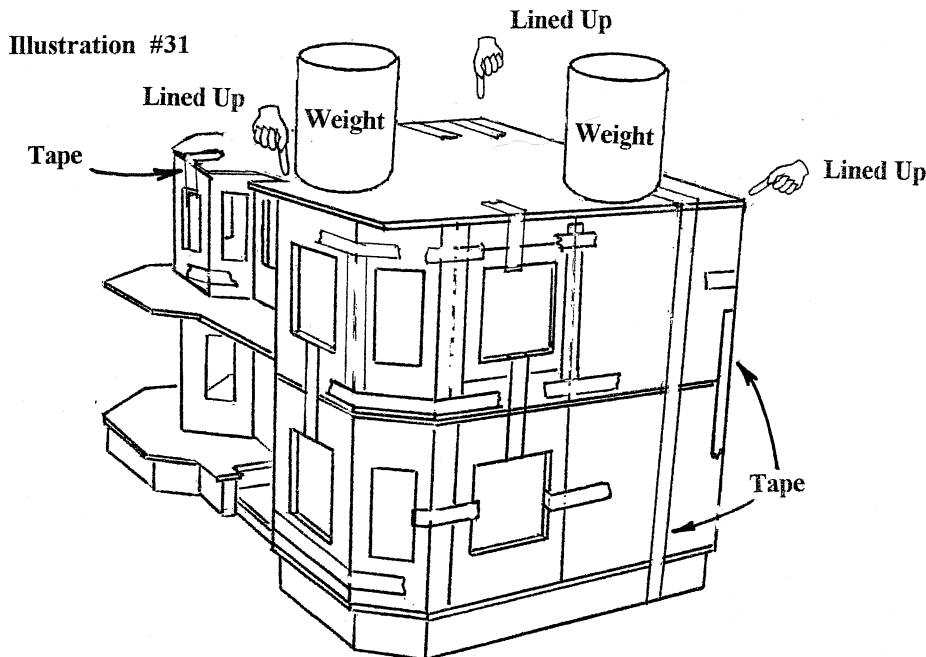
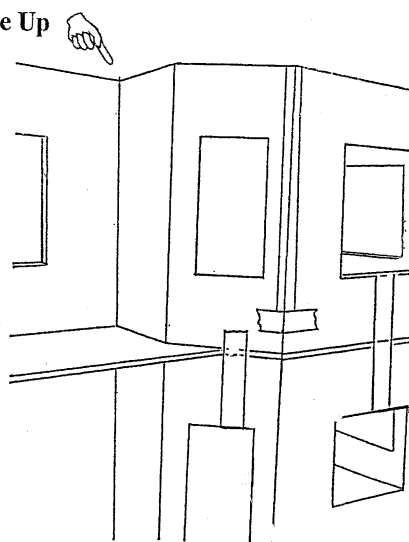


Illustration #30 Walls Line Up



ALCOVE:

Preview: In this section, you will assemble the Alcove Walls and Floors.

- 29. Glue and tape the First Story Alcove Side Walls to the house walls, flush at the inside (Illustration #32).

Illustration #33

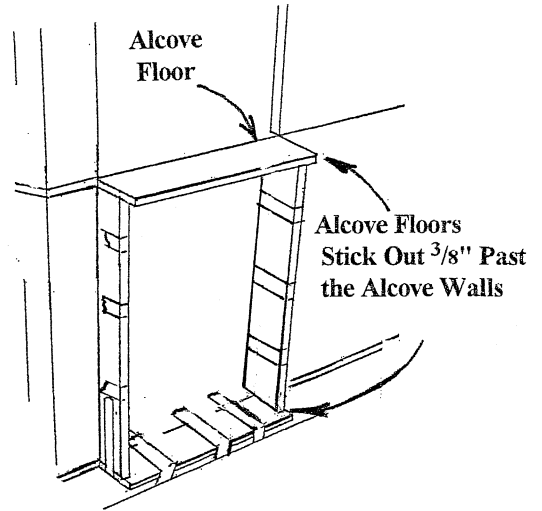
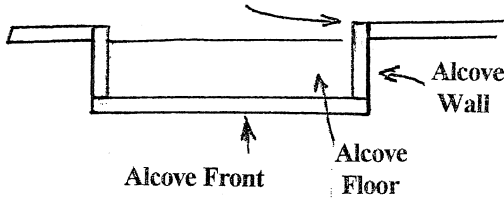


Illustration #32



Glue and tape an Alcove Floor to the Floor and Alcove Walls.

Glue and tape an Alcove Floor to the Second Floor and Alcove Walls (Illustration #33).

Without glue, tape the First Story Alcove Front in place. Make sure the Floors are flush on the sides and front; adjust the fit of the Walls if necessary.

- 30. Glue and tape the Second Story Alcove Walls in place.

Without glue, tape the Second Story Alcove Front set in place (Illustration #34).

Illustration #34

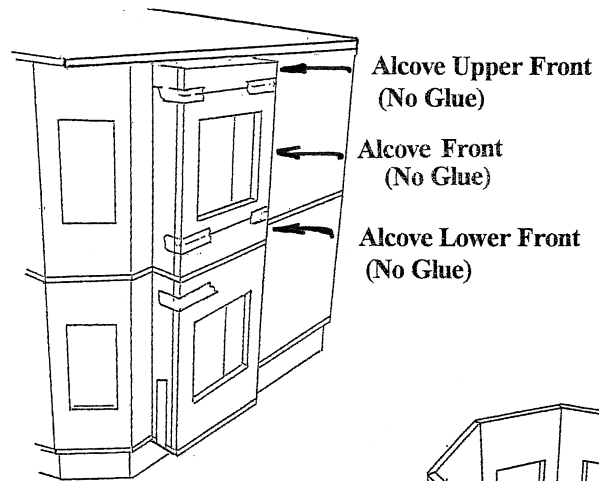
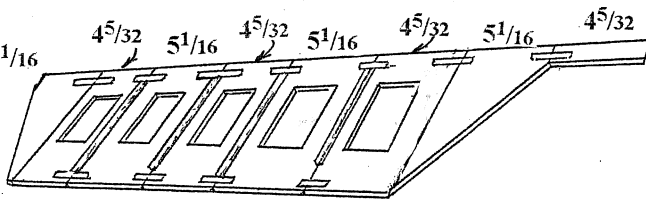
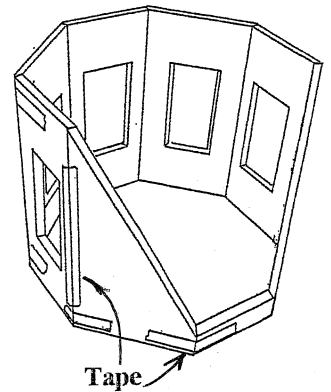


Illustration #35



The Tower Walls Shown Up-Side-Down



The Tower Room:

Draw Shingle Guidelines on the Tower Third Floor Walls. Draw the 1st guideline $2\frac{3}{4}$ " from the bottom edge. Continue drawing the guidelines every $\frac{5}{8}$ " up the Walls.

Note: The Tower Shingles come out best if they are attached after the Tower, Skirting, and Skirt Ledge is done

- 31. Without glue, tape together the outside corners of the Tower Walls (Illustration #35).
- 32. Without glue, tape the Tower Room temporarily in place, flush with the front and left edges of the Third Floor (Illustration #36).

Illustration #36
Tower Walls Temporarily in Place

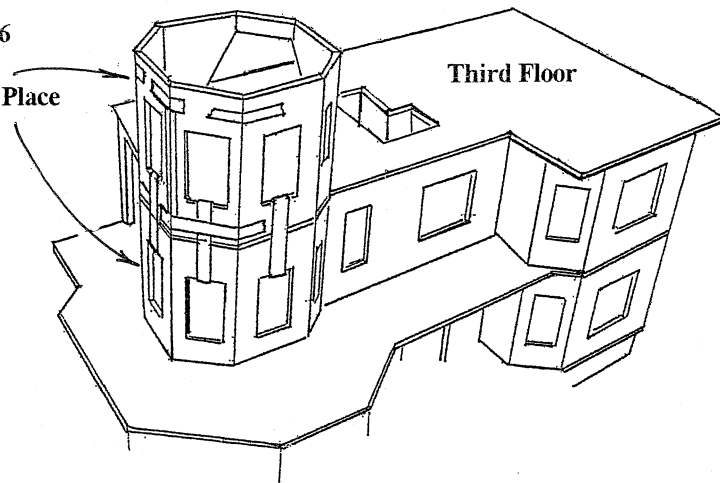


Illustration #37

The Roof:

Preview: In this section you will draw Shingle guidelines, install the Gable Triangle, and build the Roof.

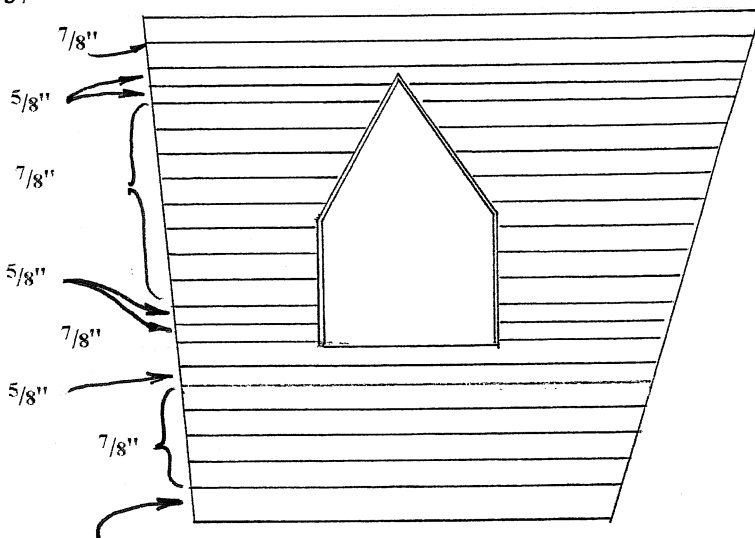
□ 33. Draw Shingle guidelines on the roof panels after testing them for orientation and location (so you know which face goes outside), but before you attach the roofs to the house. Draw the guidelines as follows:

House Roof Panels (Illustration #37):

1st guideline one Shingle length ($1\frac{1}{4}$ ") above the bottom edge of the Roof panel. Continue drawing the guidelines up the roof panels as follows:

Note: The finishing materials for the Queen Anne include Fancy Shingles which use a $\frac{5}{8}$ " spacing.

2nd guideline	$\frac{7}{8}$ "	12th guideline	$\frac{7}{8}$ "
3rd guideline	$\frac{7}{8}$ "	13th guideline	$\frac{7}{8}$ "
4th guideline	$\frac{7}{8}$ "	14th guideline	$\frac{7}{8}$ "
5th guideline	$\frac{7}{8}$ "	15th guideline	$\frac{7}{8}$ "
6th guideline	$\frac{5}{8}$ "	16th guideline	$\frac{7}{8}$ "
7th guideline	$\frac{7}{8}$ "	17th guideline	$\frac{7}{8}$ "
8th guideline	$\frac{5}{8}$ "	18th guideline	$\frac{5}{8}$ "
9th guideline	$\frac{5}{8}$ "	19th guideline	$\frac{5}{8}$ "
10th guideline	$\frac{7}{8}$ "	20th guideline	$\frac{7}{8}$ "
11th guideline	$\frac{7}{8}$ "		



1st Shingle Guideline
 $1\frac{1}{4}$ "

Illustration #38

Mark the Location for the Shingle Guidelines

Tower Roof Panels (Illustration #38 & #39):

Mark the location of the Shingle guidelines on the Tower Roof panels, then use a Tower Roof panel as a straight edge (This will allow you to have the correct angle) to draw the shingle guidelines.

1st guideline one Shingle length ($1\frac{1}{4}$ ") above the bottom edge of the Roof panel. Continue drawing the guidelines as up the roof panels as follows.

2nd guideline	$\frac{7}{8}$ "	9th guideline	$\frac{7}{8}$ "
3rd guideline	$\frac{7}{8}$ "	10th guideline	$\frac{7}{8}$ "
4th guideline	$\frac{7}{8}$ "	11th guideline	$\frac{7}{8}$ "
5th guideline	$\frac{5}{8}$ "	12th guideline	$\frac{7}{8}$ "
6th guideline	$\frac{7}{8}$ "	13th guideline	$\frac{7}{8}$ "
7th guideline	$\frac{5}{8}$ "	14th guideline	$\frac{7}{8}$ "
8th guideline	$\frac{5}{8}$ "		

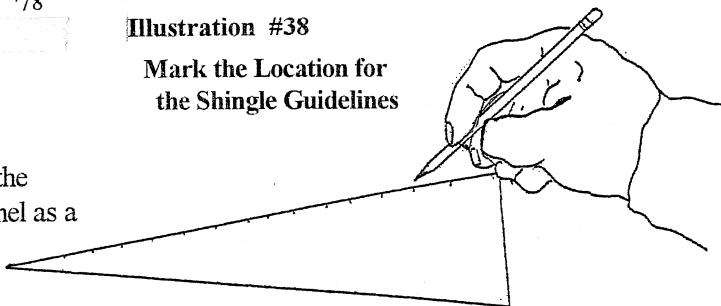
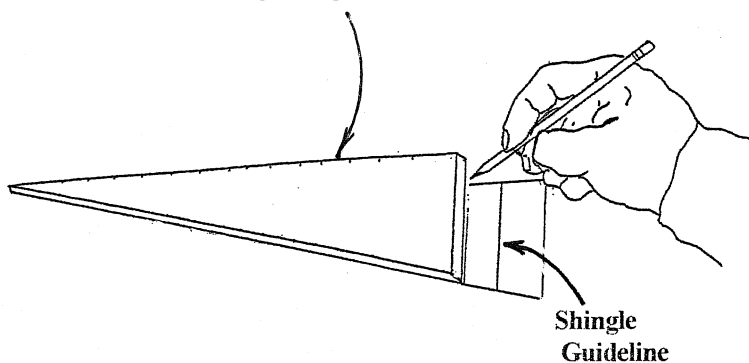


Illustration #39

Use a Tower Roof Panel as a Straight Edge



Alcove Roof Panel:

Draw the 1st guideline $1\frac{1}{8}$ " above the bottom edge of the Roof panel. Draw the next guideline spaced 1" above the first.

Dormer Roof Panel:

Draw the 1st guideline one Shingle length ($1\frac{1}{4}$ ") above the bottom edge of the Roof panel. Draw the rest of the guidelines every $\frac{7}{8}$ " up the roof panels.

Dormer Front and Gable Triangle:

Draw the 1st guideline one Shingle length ($1\frac{1}{4}$ ") above the bottom edge of the panels. Draw the rest of the guidelines every $\frac{7}{8}$ " up the panels.

Pro Tip: It is much easier to shingle the Gable Triangle before installation.

Also shingle the Dormer Body and Tower Upper Roofs well in advance of building that part of the house.

34. Locate the position of the Gable Triangle by measuring $20\frac{1}{2}$ " from the back edge of the dollhouse (use the $20\frac{1}{2}$ " Kneewall on both sides to confirm the measurement). Glue and tape the Gable Triangle in place. Tape a Divider to the Gable Triangle to hold it steady and straight (Illustration #40 & #43).

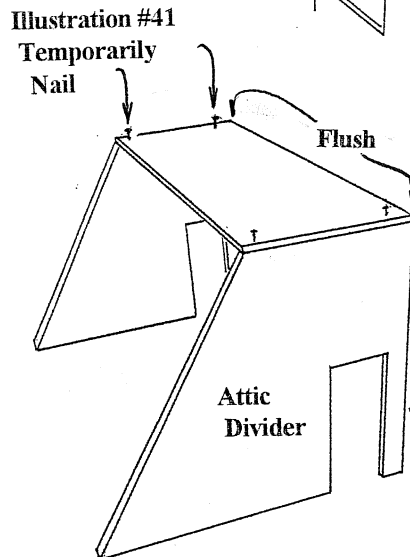
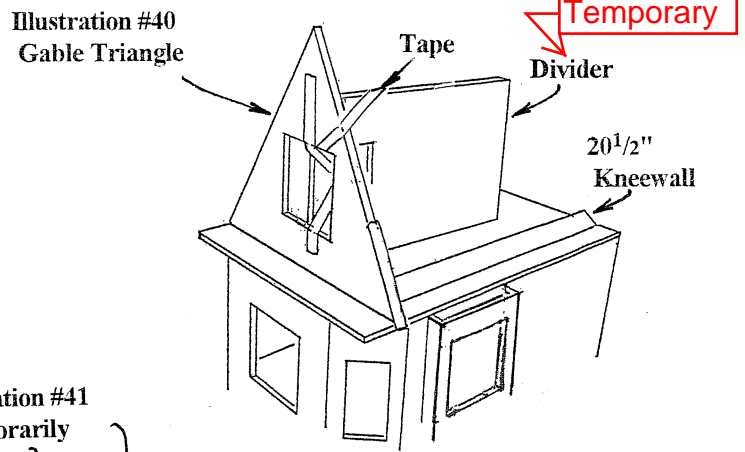
35. Temporarily nail together the Rooftop and the Attic Dividers, flush at the ends and back edge. Leave the nails sticking out enough to grab with pliers, so that you can pull them out later (Illustration #41) when you are ready to shingle the house.

36. Glue and nail the Front Roof to the Rooftop (the Front Roof overlaps the Rooftop), and temporarily nail to the Dividers (Illustration #42).

The Front Roof lines up with the Rooftop on the inside corner, with the point of the Front Roof sticking up about $\frac{1}{4}$ " above the Rooftop.

☞ It is extremely important that the Roof Top is straight (or the Attic Dividers won't fit right). Check that the Roof Top is absolutely straight and lines up on the inside corner with the Front Roof all along its length.

Without glue, set the Front Roof assembly on the Third Floor, lined up against the Tower Room and at the back edge of the Third Floor (Illustration #43). Place dividers in the first and second storys to support the third floor and hold it very straight (check it often) as the roof is being built.



Note: Our assembly pro sets this Attic Divider $7\frac{1}{2}$ " in from the end. This guarantees the fit of the Attic Divider, but requires moving it to the position shown when setting the Kneewalls.

Illustration #42
Front Roof, Roof Top & Attic Divider Shown Up-Side-Down

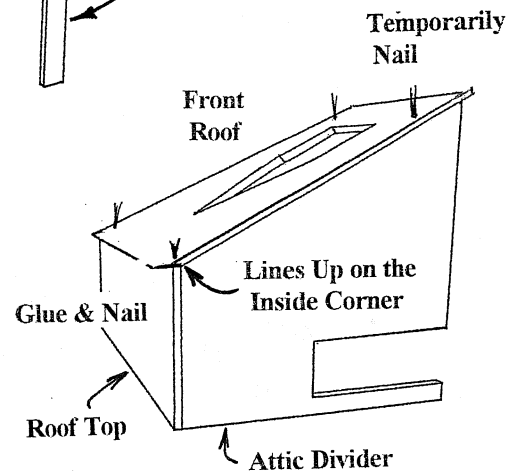
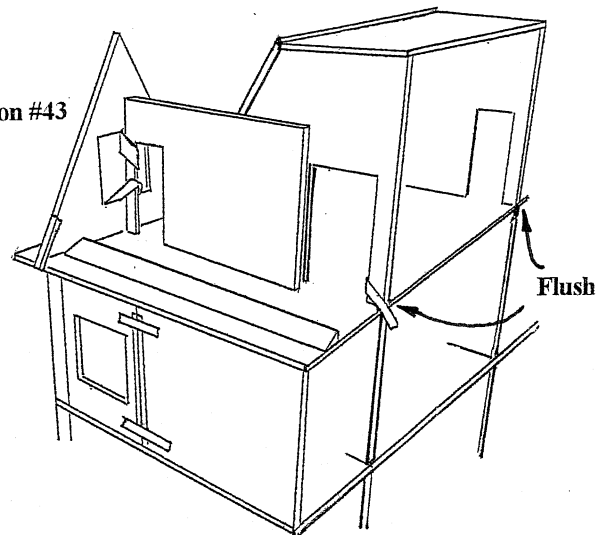


Illustration #43



37. Tape together the top edges of the Right Roof and the Gable Left Roof (Illustration #44 & #45).

38. Test then glue and tape the Gable Roofs to the Gable Triangle, to the Front Roof, and to the Rooftop.

☞ Make sure the Right Roof lines up

EXACTLY with the Rooftop on the inside (Illustration #47). Make sure the Roof overhang is even around the Gable Front

39. Tape the Front Roof to the Gable Left Roof on the inside. Use lots of tape and use nails where convenient for a great fit.

40. Test then glue and tape the Left Roof, then the Corner Roof in place, lined up exactly and even on the inside with the inside of the Roof. Check the fit of all the Roof parts with each other and with the Tower (Illustration #54 on page 20).

☞ Make sure everything is smooth and tight on the inside (the outside will get shingled, so don't worry about extra nail holes or hammer marks...they will all be hidden).

☞ Look at the Rooftop on the inside, just above the Dividers (The Roofs should all line up at this corner).

☞ Check the bottom on the outside where the Roof touches the outside wall (The overhang should be straight and even). Make everything perfect now.

Illustration #44

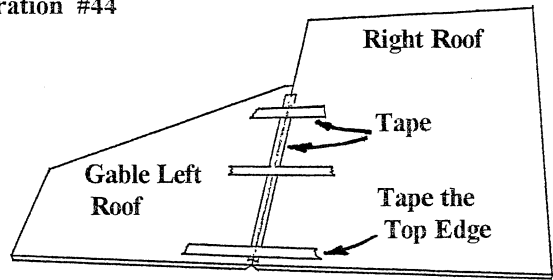


Illustration #45

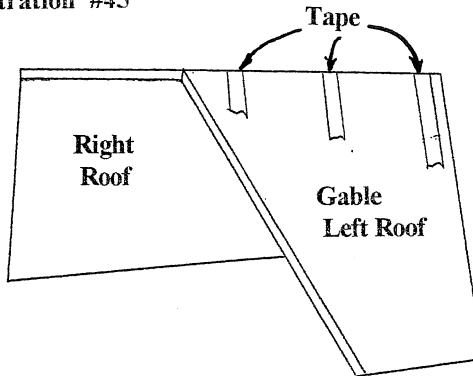


Illustration #46

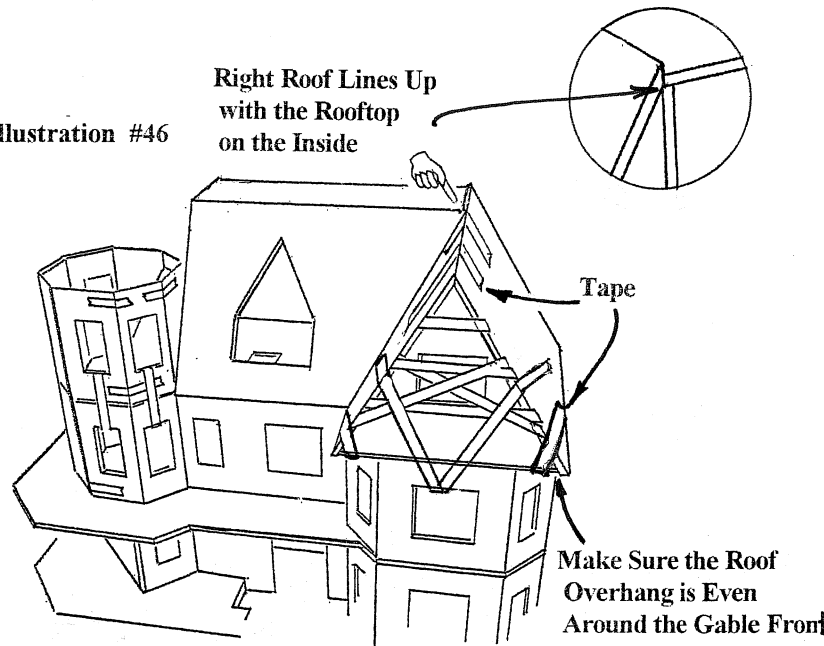
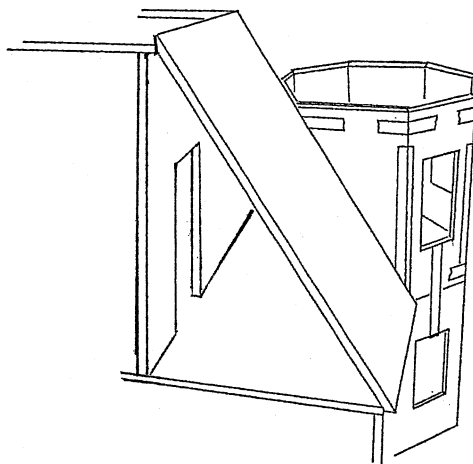


Illustration #47

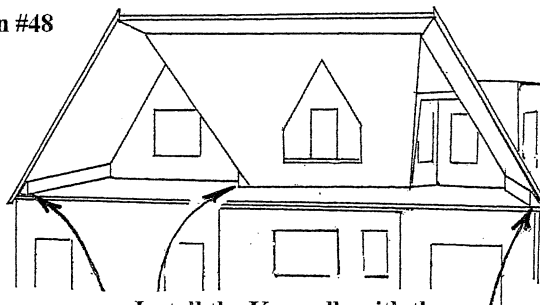


Roofs Lined Up

Divider

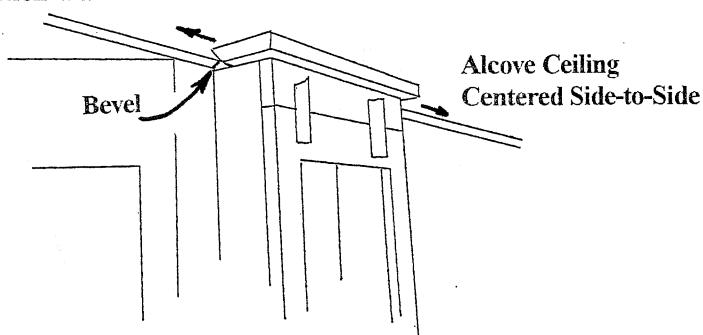
- 41. Install the Kneewalls before you remove the Attic Partitions (Illustration #48).
- 42. Glue and nail or tape the Alcove Ceiling in place, with the bevel against the roof, and centered side-to-side (Illustration #49).
- 43. Glue the Alcove Triangles in place, flush at each end. Let dry.
- 44. Glue and tape the Alcove Roof to the Triangles and house roof, centered side-to-side on the Alcove. Use temporary nails if necessary to hold everything tight as the glue dries (Illustration #50).
- 45. Glue and tape the Second Story Alcove Lower and Upper Fronts in place (the second story Upper and Lower Alcove Fronts accept wraparound Trim; Only the Middle is hinged).

Illustration #48



Install the Kneewalls with the Attic Dividers in Place

Illustration #49

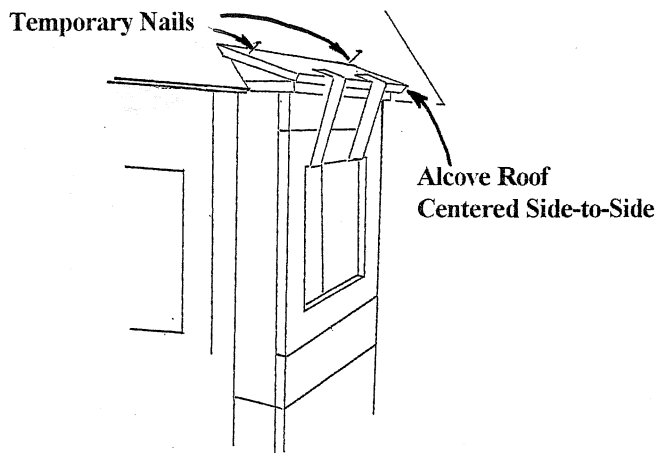


DORMER:

Preview: In this section you will build and attach the Dormer.

- 46. Glue and tape the Dormer Sides to the Dormer Front, flush with the bevel and lined up at the Roof angles (Illustration #51).
- Shingle and paint the Dormer Front and Side set.
- 47. Glue and tape the Roof set together and to the Dormer Front and Sides. Set on a flat surface to dry.

Illustration #50



- 48. Glue the Dormer assembly to the House Roof lined up with the dormer hole. Tape the inside of the Dormer into the attic (to the inside of the House's Front Roof) and around the outside to the House's Roof edges. Use lots of tape for a tight fit (Illustration #52).

Illustration #51

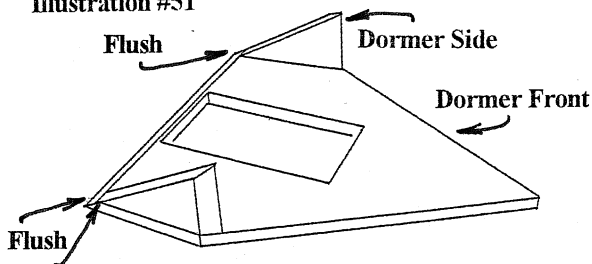
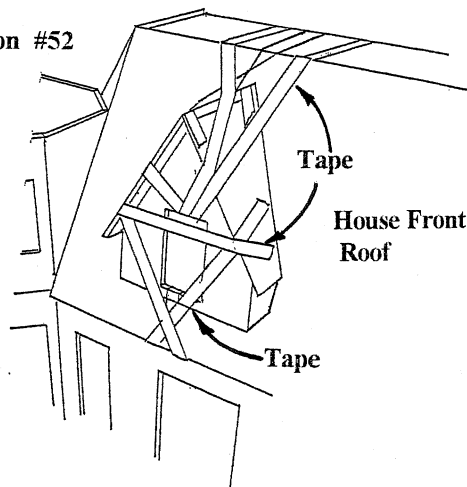


Illustration #52



Build and attach the Chimney (box 2 of the complete kit).

49. Remove the Tower wall set.

Shingle the House, Dormer, & Alcove Roofs:

If you have the "Complete" Queen Anne, shingles and more shingling instructions are in "Box 2". If you bought the shell and are making your own accommodations for roof treatment these shingling instructions are general enough to be a starting point for customized shingles.

Glue: Use a thick panel adhesive such as Liquid Nails®^{Macco} available in a caulking gun tube at building supply stores. Trim just a little of the end of the tube for a tiny hole, to give a thin bead of glue. Always use good ventilation with solvent based adhesives.

50. Apply a thin line of adhesive $\frac{1}{8}$ " below the lowest guideline all the way across the Roof. Press the top edge of a Shingle into the line of glue, squeezing out the excess. Hold the first Shingle steady and press another shingle into the adhesive, tight to the first. Hold the next Shingle and press in another... etc. all the way across the roof, cutting the last shingle to fit. The first row of Shingles is tight to the bottom, the rest line up with the guidelines. Finish each row before starting the next row. Put in a narrow shingle, if necessary to make the shingle row come out right.

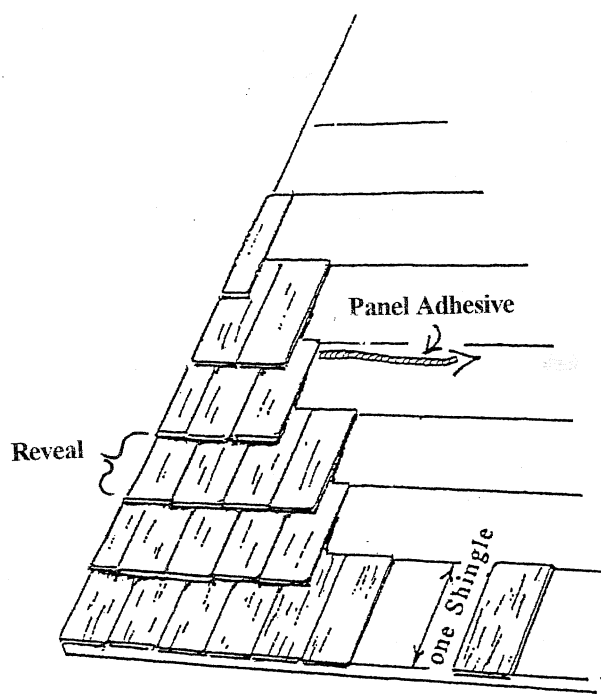
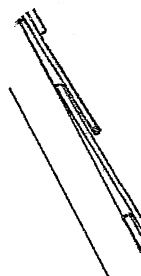
51. Continue up the roof one row at a time. Start every other row with a half Shingle so that the seam between Shingles is offset $\frac{1}{2}$ Shingle back and forth as you go up the roof. Shingle the Front first then the Dormer Roof. A good fit leaves both outside edges straight up and down the roof.

Pro Tip: On the house roofs, our assembly pro sets the shingles for the top row horizontally for a "Boston Lap".

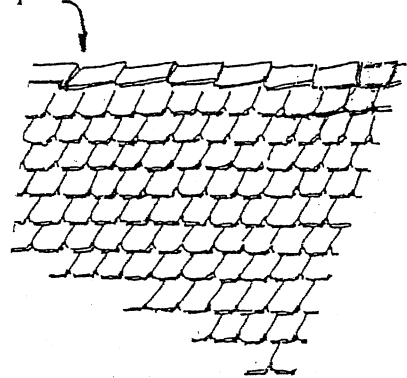
Cut the top shingles for the alcove (1") to give all three courses the same reveal.

Painting the Shingles:

For our show models we paint the shingles with a wash of 50% grey latex paint and 50% water. Have a towel in one hand to catch the runoff before it drips, or lay the house on its back so the drips don't run off at all.



Boston Lap



Tower Roof:

Preview: In this section, you will attach the Tower Ceiling, the Tower Lower Roof, and the Tower Upper Roof.

- The Tower Ceiling and Lower Tower Roof set each have one edge that fits against the Corner Roof of the house. Look for the edge that's cut away more than the rest to fit in that location.
- We leave two Upper Tower Roof panels as an access to the tower attic. When attaching the Upper Tower Roofs, glue these two panels together, but leave them unglued to the other Upper Roofs and the Lower Roofs, so you can hinge them later.
- It is far easier to shingle the Upper Tower Roofs before assembly (Illustration #53), and to do all the assembly with the shingled parts. Shingle the Roofs several days ahead of time so the glue will be really dry (follow the Shingling instructions in the "Finishing" section), then trim the Shingles to exactly match the bevels of the Roofs. Cut from the inside laying your x-acto[®] knife or single edge razor against the bevel of the Roof panel, and make several light cuts starting at the bottom and working to the top.

52. Glue and tape together the Tower Walls, then glue the set in position, flush at the front and left sides of the Third Floor, and to the Roofs. Use plenty of tape down both the front and the side of the Tower Room to hold it in place (Illustration #54). Check again that everything is lined up.

Pro Tip: Finish the Tower Walls now. Complete kit builders, see box 2 instructions, page 7.

53. Test the Tower Ceiling on the tower body, touching the Corner Roof Shingles. Adjust the overhang to be even all around (Illustration #55).

Illustration #53

Shingle the Upper Tower Roof Panels

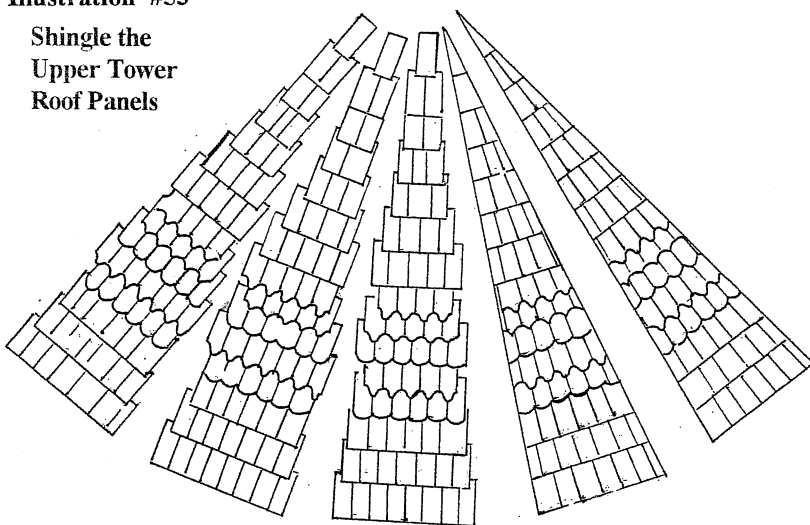


Illustration #54
Corner Roof

Left Roof

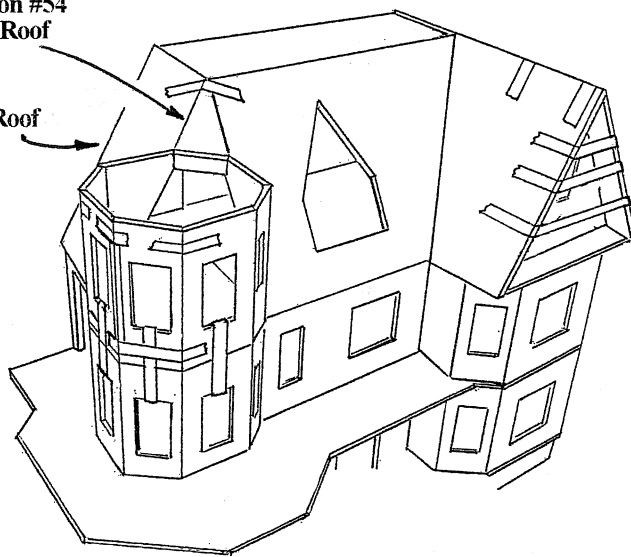
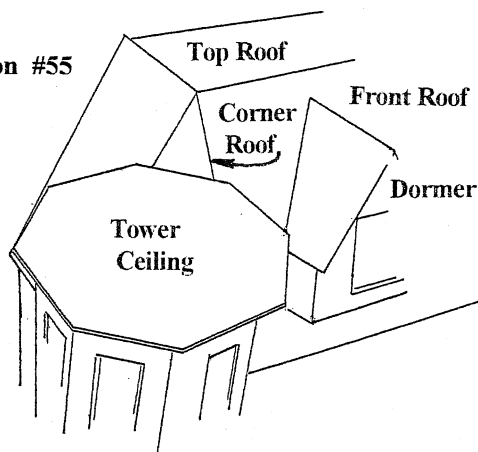


Illustration #55

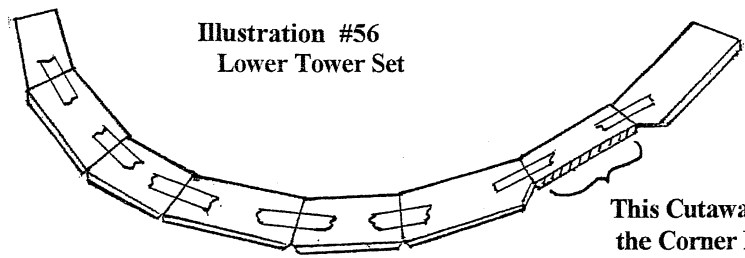


- 54. Lay out and tape the Lower Tower Roofs with the longer (face) Roofs alternating with the short (corner) Roofs.

Wrap the Lower Tower Roof set into an octagon (Illustration #56) and test it on the Tower Ceiling in place on the house.

Confirm that the overhang under the Tower Ceiling is even all around, and that the Lower Tower set fits evenly on the Tower Ceiling, and that the extra cutaway is fitting up against the house Corner Roof.

Mark and paint the Tower Ceiling now.



- 55. Glue, tape, and weight the Tower Ceiling to the tower. Adjust the overhang to be even all around.

- 56. Glue together the Lower Tower Roof set.

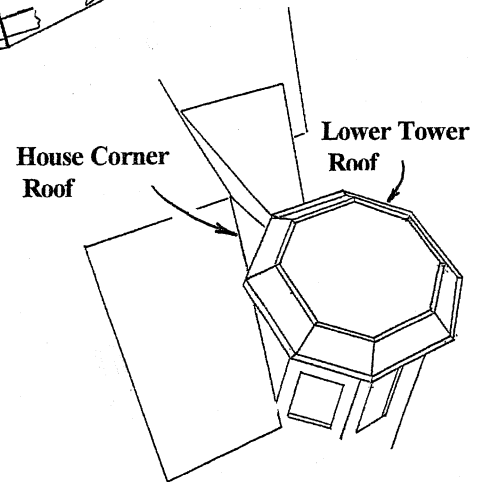
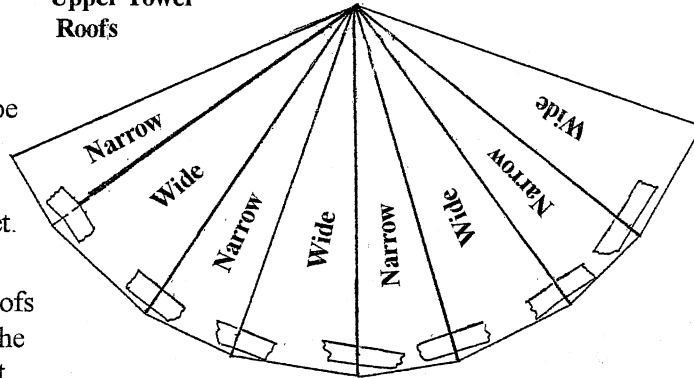
- 57. Layout and tape the Upper Tower Roofs with the longer (face) Roofs alternating with the shorter (corner) Roofs (Illustration #57). Test the set on the Lower Tower Roofs and determine which pair (if any) you will leave un-glued for access to the attic.

Glue the access Roofs to each other, but do not glue them to the other Roofs. Tape them in place along with the other Tower Roofs.

Pro Tip: After all the glue has dried, the access Tower Roof set may be hinged.

Glue together the Tower Upper Roofs; glue and tape them in place onto the Lower Roof Assembly (Illustration #58).

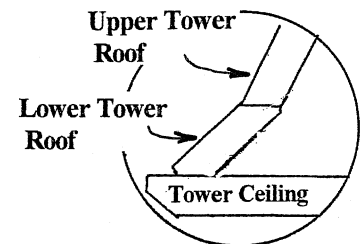
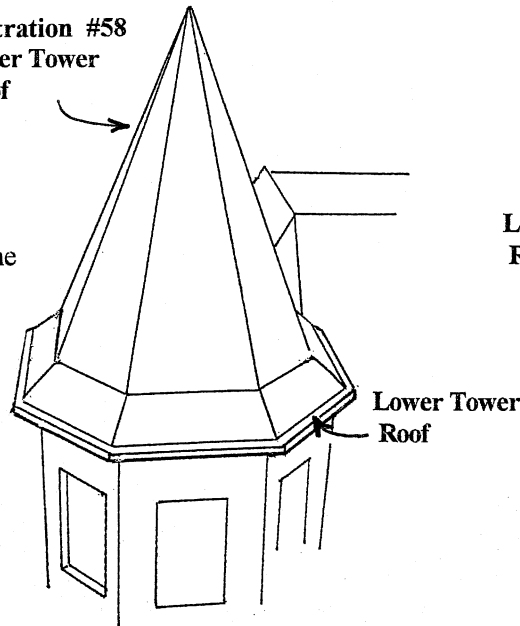
Illustration #57
Upper Tower
Roofs



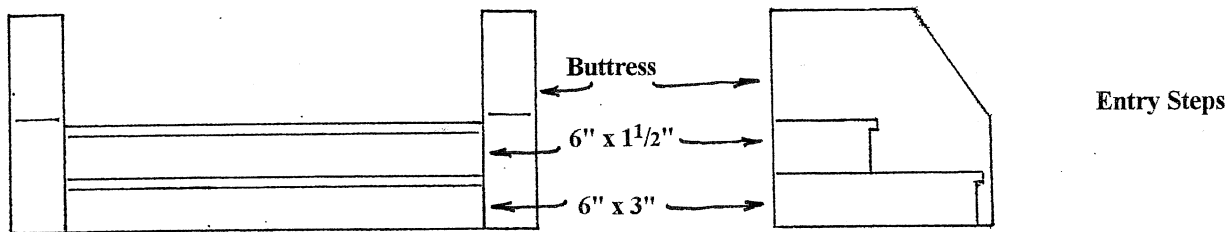
- 58. Shingle the Lower Tower Roof:
 - Full Shingle at the bottom
 - Cut Shingles (7/8") at the top
 Paint the Tower Roof Shingles.

- 59. Glue and tape the Tower Roof set to the Ceiling spaced evenly all around.

Illustration #58
Upper Tower
Roof

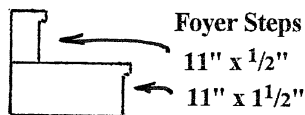
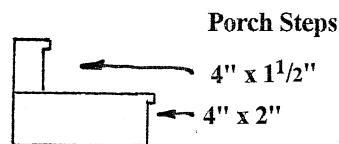


Install the Steps and Dividers as part of the Finishing process. Extra Dividers are provided for customizing. Plan ahead to make sure parts are installed in the right order.



Our pro finishes the interior of a few houses each year. Here's the order that he follows for tackling interior finishing...

- Electrical wiring (he only uses **tape** style)
- Score and stain floors
- Wallpaper (use "Yes" brand paste)
- Dividers (see Illus. on this page & page 6)
- Carpeting
- Stairs
- Molding and trim

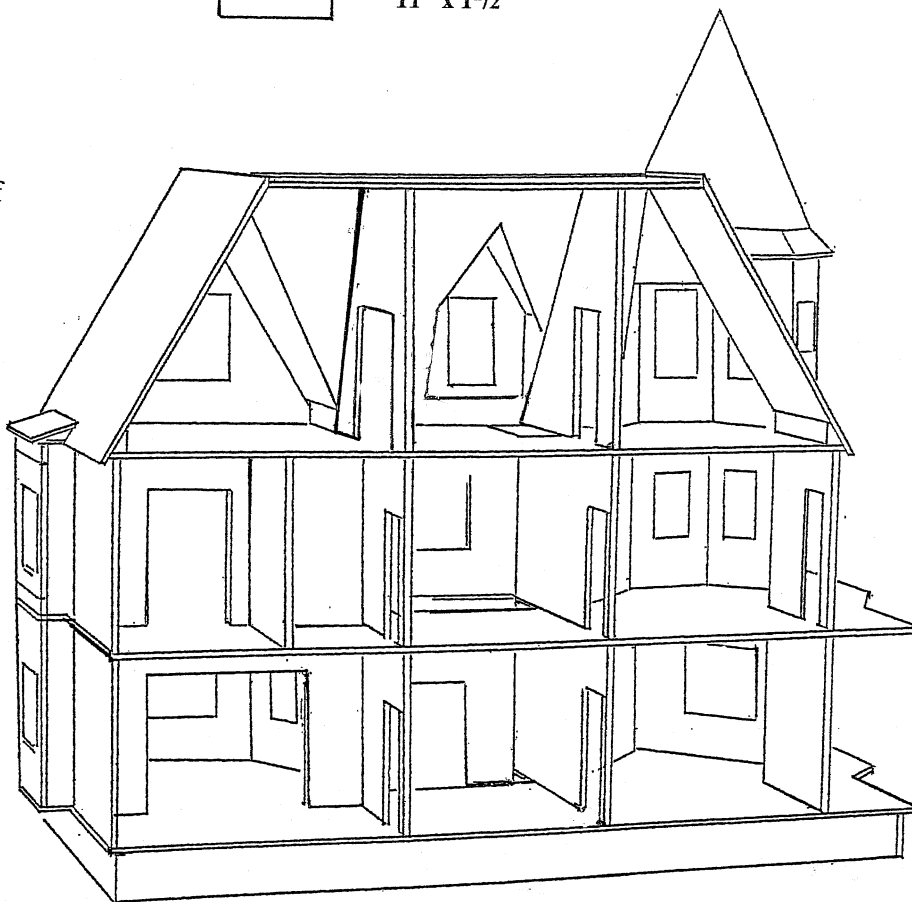


Hinge the Alcove Fronts and Tower Roof after the exterior finishing is complete.

"Complete Kit" Builders: Skip ahead to page eight of the box 2 instructions and forge on.

All Others: The shell assembly part of your project is complete...

ENJOY THE REST!



(Rear View)