

The T10 Turntable can be set under a small dollhouse and, as long as the dollhouse balances and has base floor or foundation parts that line up with the turntable, can be used loose or stuck in place with double-sided tape (sticky on both sides like double sided scotch tape or carpet tape).

When a dollhouse is larger and needs more stability from the turntable, it will be better to attach the turntable to the dollhouse, or to attach the turntable to one or a pair of plywood decks then attach the turntable set to the dollhouse, and this is what the following instructions show. The instructions are separated into "part A", "part B", and "part C".

Turntable option #2 (#1 is the un-attached or taped option at the top): attach the turntable to one deck and then directly to the house (requires a  $\frac{3}{8}$ " or more thick Base Floor on the dollhouse), follow Part B only to screw the Turntable to the bottom of the Base Floor.

Turntable option #3, attach the turntable to one deck and then screw the set directly to the house (requires a  $\frac{3}{8}$ " or more thick Base Floor on the dollhouse): follow Parts A and B only to screw the Turntable set to the house.

Turntable option #4 for even larger houses, houses with foundations, or houses with thinner Base Floors: attach the turntable to two decks and then attach the Upper Deck to the house, follow Parts A, B, and C, and screw, glue, or tape the Turntable set to the house.

**Tools and Supplies (see 'options' above):**

T10 Turntable

Deck(s) for your turntable, 12 x 12 or larger (the photos use 13 x 20)

(8)  $\frac{3}{8}$ " #6 panhead sheet-metal screws (Phillips style is easier to use)

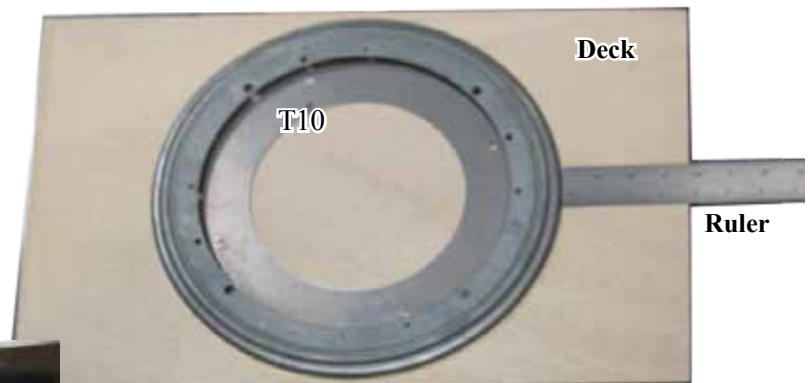
Screw driver that fits the screws

See <http://realgoodtoys.help/1065/blogs/HingesAndScrews.html>

Drill with  $\frac{5}{8}$ " or larger drillbit

**Part A: Attach the T10 to the Bottom Deck**

1. Place the Turntable in the middle of the deck with the wide ring against the deck.
2. Trace the center of the wide ring onto the deck; Mark the center of the big hole on the deck.



**The Narrow Ring**

**The Wide Ring**

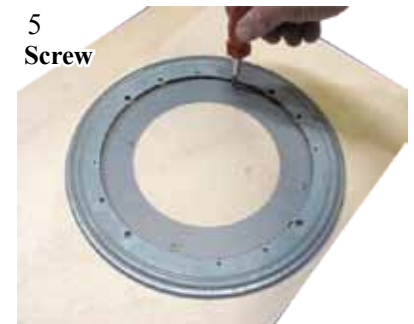
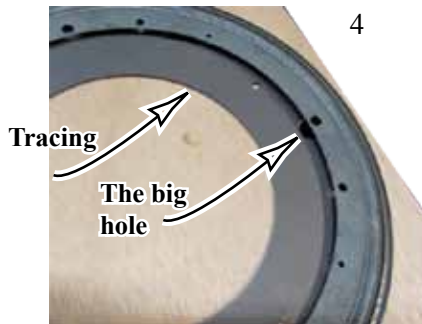
**The Center**



**The Big Hole**

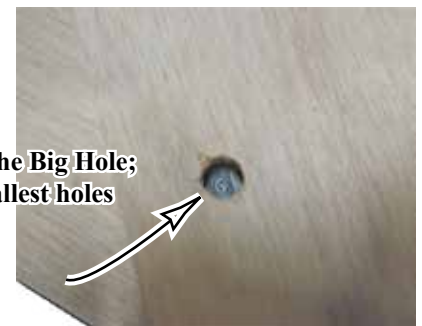
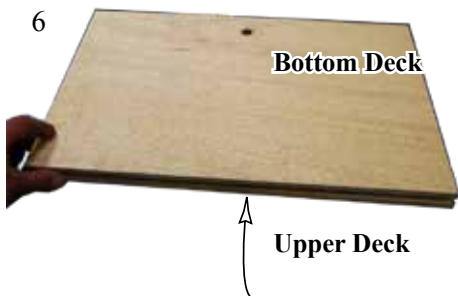
Part A, continued:

3. Drill a 5/8" or larger hole at the center mark for the 'Big Hole'.
4. Move the T10 to the middle of the deck (lined up with the tracing) and with the 'Big Hole' in the T10 over the hole you drilled.
5. Screw the T10 to the Deck thru the four small holes in the Wide Ring.

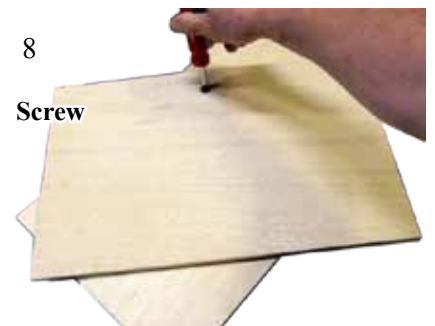


Part B:

6. Put the Turntable Set on the Upper Deck; line up the corners.
- Note: in options 2 or 3 there is no upper deck. In those cases, find the balance center of the dollhouse by putting it on the Turntable and rotating, making adjustments as necessary so the dollhouse sits level and spins without wobbling.



7. Rotate the Bottom Deck (with the 'Big Hole') without letting the Turntable slide on the Upper Deck. Find one of the (4) smallest holes in the Narrow Ring.
8. Screw the Narrow Ring to the Upper Deck (or to the bottom of the Dollhouse for options 2 or 3) thru each of the four smallest holes. A magnet stuck to the side of the screwdriver will make controlling the screws easier.



Part C

9. Find the 'balance center' of the dollhouse (see step 6). Control the dollhouse on the Deck using double sided tape or glue. Without letting the Upper Deck move relative to the dollhouse, rotate the Bottom Deck and nail or screw the exposed corners of the Upper Deck to the dollhouse.

