

Real Good Toys

America's

Collector Quality

Dollhouse kits

Options (not included in the shell kit):

- #1125 Shingle Dye
- SC Copper Flashing
- #T-10 Turntable

- #H-1001K Component Kit, includes:

(1)	1001	3-in-1 Dollhouse Planbook
(2)	H-1114	Knob w/ Key Plate
(6)	H-5025	Louvered Shutter
(6)	H-5032	Double Hung Window
(7)	H-5042	Victorian Window
(5)	H-6007	Interior Door
(1)	H-6013	Exterior Door
(1)	H-7000	Straight Stair Kit
(1)	H-7002	Dormer with Window
(5)	H-7004	Square Butt Shingle
(1)	H-7005	Fishscale Shingle
(7)	H-7009	Turned Spindles
(1)	H-7011	Porch Railings
(2)	H-7012	Newel Posts
(1)	H-7019	Stair Spindles
(3)	H-7030	Veranda Corner Post
(1)	7035	1/4" Clapboard Siding, 24"
(4)	7045	3/8" Corner Molding



the 1/2" Front-Opening Victorian Smooth Shell*

Dollhouse Kit #H-1001

16⁵/₈"W x 11¹/₄"D x 16¹/₂"H

*The *Finished* 1/2" Victorian pictured above

Includes:

- H-1001: Shell Kit
- H-1001K: Component Kit (Purchased Separately)

The Shell Features:

- Front-Opening design
- 3/8" Cabinet grade plywood
- Step-by-Step shell instructions
- 10 rooms (including bathroom and hallways)
- Easy and durable construction
- Handcrafted, pre-cut precision parts



Assembled Shell

The H-1001-K Houseworks Victorian

Victorian Front Parts List:

Front roof 16-1/2" x 6-7/16" with dormer
Porch steps 2-1/4" x 1-1/4"
 2-1/4" x 7/8"
 2-1/4" x 1/2"
Left front 11-17/32" x 8-11/16" with window & door openings
Right front 11-17/32" x 7-1/8"
Gable front 3-9/16" tall x 6" wide (triangular)
Middle porch roof 8-5/8" x 3"

Pack A:

Porch foundation 8-1/4" x 1-1/8" (front)
2 - Porch foundations 2-1/16" x 1-1/8" (sides)
2 - Porch floors 8-1/2" x 2-3/8"
2 - Middle porch triangles 2-3/8" x 1"

Pack B:

Balcony front 5-3/4" x 1-1/4"
2 - Balcony sides 1-5/8" x 1-1/4"

Pack C:

2 - Facia ceilings 5-5/16" x 1-5/8"
4 - Facia sides 1-5/8" x 11/16"
2 - Facia front 5-3/4" x 11/16"

Pack D:

2 - Gable sides 1-1/4" x 1/2"
Gable floor 5-19/32" x 1-1/4"

2 - Gable roofs (left & right)
Porch roof top 6-3/4" x 2-7/16" beveled
Porch roof base 6-1/4" x 1-3/8" beveled
2 - 1/2" 'V40' triangles
3 - Bay walls 10-1/8" x 2-3/16" each beveled differently
3 - Bay floors 1-3/8" x 4-11/16"

House Body

Base floor 15-3/8" x 8-1/4"
Middle floor 15-3/8" x 8-1/4" with stair hole
Top floor 15-7/8" x 9-1/2"
Rear Wall 10-13/32" x 15-7/8"
2 - Side wall 10-13/32" x 8-1/4" grooved for floors, with windows
Back roof 16-1/2" x 7-1/16"
Top front roof 16-1/2" x 1"
2 - Side triangles 4-3/4" tall, 9-1/2" base
2 - Attic partitions 4-3/4" tall, 5-3/4" base
2 - Foundations 15-5/8" x 1-1/4"
3 - Foundations 7-5/8" x 1-1/4"
4 - Dividers 5" x 8-1/4" with door opening
Divider 5" x 5"
Divider 5" x 2-1/2" "L" shaped
2 - Divider 5" x 3/4"
Upper stair blind 4"

4 - Eave return 3/16" x 1/4" 1-1/4"
7 - Hinges and 28 - screws

The H-1001-K Houseworks Victorian

This Dollhouse shell is Real Good Toys' 1/2" scale adaptation of the Houseworks 3-in-1 plan book dollhouse. Real Good Toys developed this house kit to be compatible with Houseworks architectural components.

As you assemble this kit, please don't be confused by the shell as described in the plan book. While the finished product is similar this kit is different from the plan book and these instructions should be used exclusively for the shell.

You may have chosen finishing touches such as wallpaper, flooring or wiring. Plan ahead to determine which stage of assembly is the easiest for adding these things.

Finally, as you go along, don't hesitate to stop working on your house for any reason. This house will last you a lifetime. It is too worthy to rush.

Supplies, Tools, Tips and Techniques

- A. We recommend that you try a dry run for each section before final assembly to check parts, to see how they locate and to understand the assembly. Then you can comfortably start out again, following the instruction steps - this time - using glue and nails. This dry run will help you avoid mistakes. In the dry run steps, you will understand the overall plan of your dollhouse and how it will work for you.
- B. Whenever possible, mark a butt joint on the panel through which the nail will pass first, then remove the panel and PREPUNCH nail holes from the back side, on center, between marks. This gives a perfectly centered nail in the joint when nailed through the hole from the front and reduces "split out" when final nailing and gluing are done. To PREPUNCH a hole, drive a nail through the panel from the back side and then pull the nail back out.
- C. Glue
 1. "Quick Grab" glue is extremely handy for things which can't be nailed or taped while drying. It is the only glue we recommend for gluing on clapboard siding.
 2. White or yellow wood glue (such as "Elmers") is an excellent glue for most uses. When applying this glue, squeeze the excess air out of the top of the glue bottle before turning it over. Then when you release pressure from the bottle at the end of a dab or line of glue, the bottle will suck the remainder of the stream of glue back in rather than running it all over your work. Between steps, go back and clean up glue after gluing and nailing. A paintbrush in a water cup may be pinched dry and used to wipe up excess glue.
- D. The stair, window and door holes have rounded corners which must be squared. Use a knife, file or very fine bladed saw and work from the surface inward on both sides to avoid "split out".
- E. A utility knife with a new sharp blade is safer and easier to use than a jack or kitchen knife for trimming, customizing and cutting.
- F. Sandpaper. Use 100 or 120 grit. Sand off any rough edges before assembly.

- G. Hammer (some people prefer tack hammers). Sand the striking surface to reduce bending nails.
- H. Brad Pusher or pliers give more control for small nails than a hammer, and without impact. Set nails the last little bit with a nail set and hammer after the glue is dry.
- I. We have found that sometimes assembly is easier with two people. So. try to have someone around to give you a hand when you need it.
- J. Finally, be sure to follow the instructions exactly when they require keeping things "Square". It is VERY IMPORTANT. If you don't quite understand how to do it, ask someone who does.

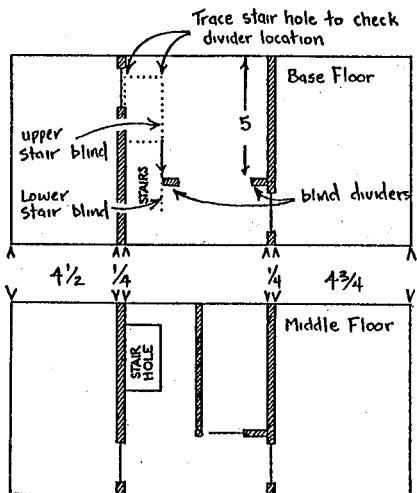
The H-1001-K Houseworks Victorian component set is available from your local dealer. This set includes everything you need to finish your dollhouse on the outside and also the interior doors and stairway. Only 1/4" stripwood which is readily available from your dealer is additionally necessary to finish this list. Below you will find a list of components included in the H-1001-K component set. Items are also available individually.

- | | | |
|-----|--------|-------------------------------------|
| (6) | H-1114 | Knob and Keyplate Sets |
| (6) | H-5025 | Louvered Shutter Sets |
| (1) | H-7000 | Straight Staircase Set. |
| (1) | H-7002 | Dormer Unit |
| (7) | H-7009 | Porch Spindles (12 pcs.) |
| (1) | H-7011 | Porch Railing Sets |
| (2) | H-7012 | Newall Posts (6 pcs.) |
| (1) | H-7019 | Stair Spindles (12 pcs.) |
| (3) | H-7030 | Veranda Corner Posts (4 pcs.) |
| (1) | 7035 | 1/4" Lap Clapboard Siding (10 pcs.) |
| (6) | H-5032 | Nonworking Glazed Windows |
| (7) | H-5042 | Victorian Nonworking Windows |
| (5) | H-6007 | Interior Doors |
| (1) | H-6013 | Victorian Prehung Door |
| (5) | H-7004 | Cedar Shingles (400 pcs.) |
| (1) | H-7005 | Fishscale Shingles (400 pcs.) |

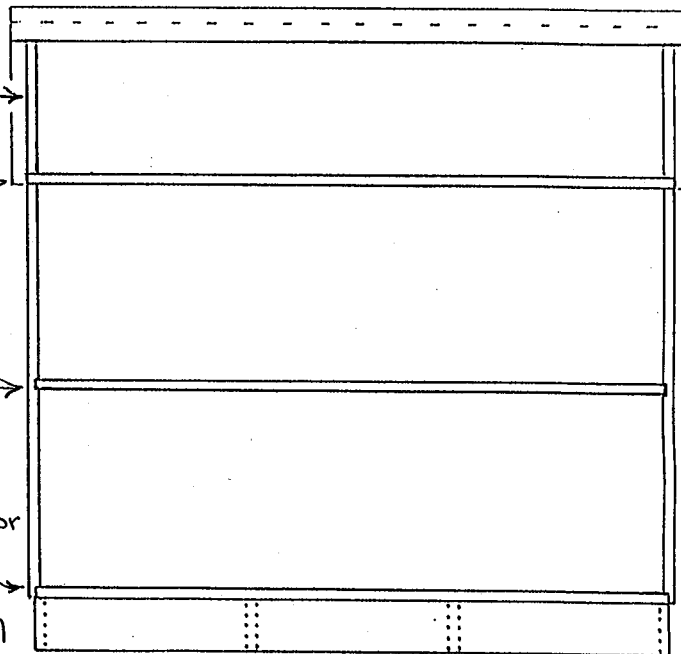
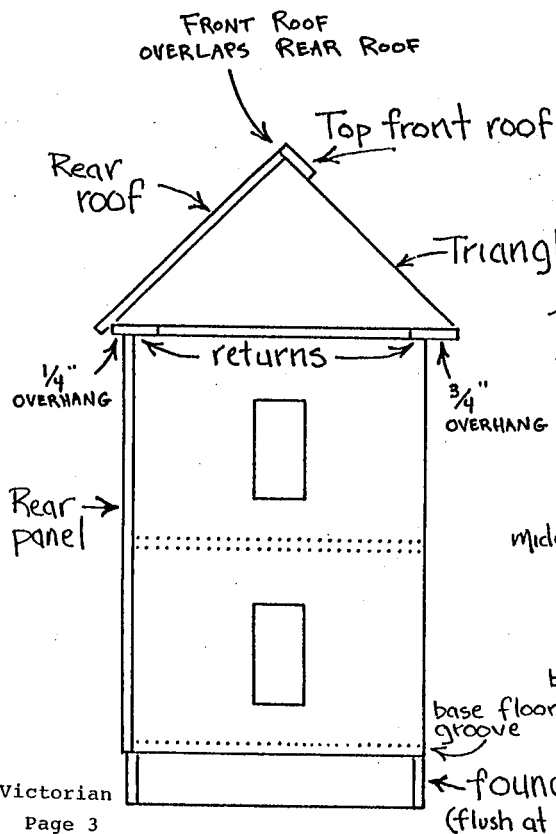
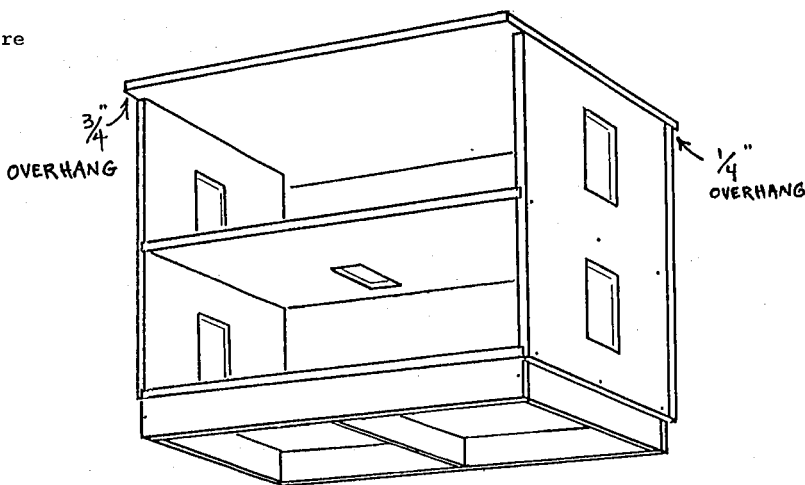
Note: There is no window used in the gable triangle above the bay in this kit because the proper window is not available at this time.

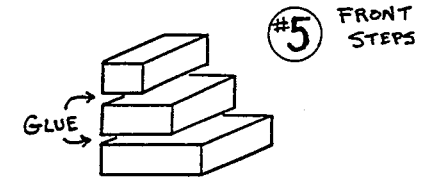
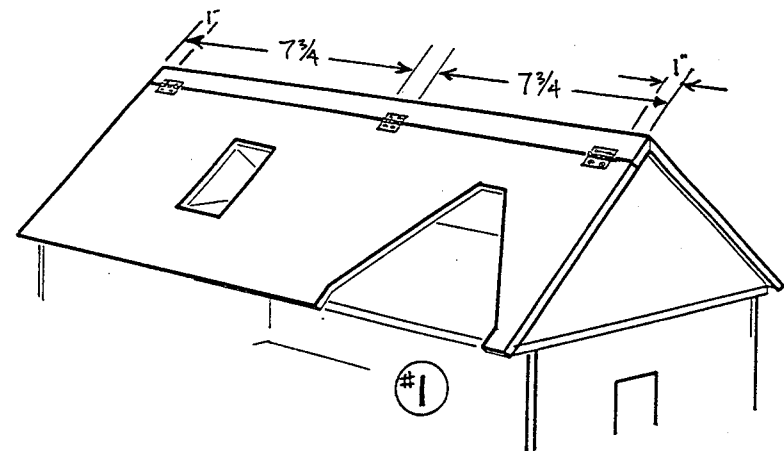
I. Houseworks "3-in-1" House Body

- A. Draw in the location of dividers as shown below prior to assembly. Lay second floor on top of the smoother side of the base floor and trace stairway opening which helps to locate the divider.
- B. Glue and nail one side panel to the base floor (side panel overlaps the floor). The base floor groove is at the bottom edge of the side panel. Repeat for the other side panel. Use an assistant or the middle panel for support.
- C. Set dividers against side panels to locate the proper height of the middle floor. Make sure stair hole is in proper position (the rear left side). Glue and nail.
- D. Before attaching rear panel you may wish to prepunch a nail hole for the middle floor center by tracing its location and driving a nail through, then pulling it out. Do this with the house on a flat surface with dividers in place. Attach rear panel. Glue and nail.
- E. Glue and nail top floor on top edge of sides and rear. Overlap approximately 1/4" at rear and 3/4" at front (away from stair hole).
- F. Glue and tape triangles to outer edges of top floor, flush at all edges of the triangle. Use dividers to hold them square while they dry.
- G. Attach rear roof and top front roof as shown with attic partitions in place. Center the roof panels side to side making sure the eaves are even.
- H. Tape front roof in place, then mount hinges as shown in illustration #1 on page 3.



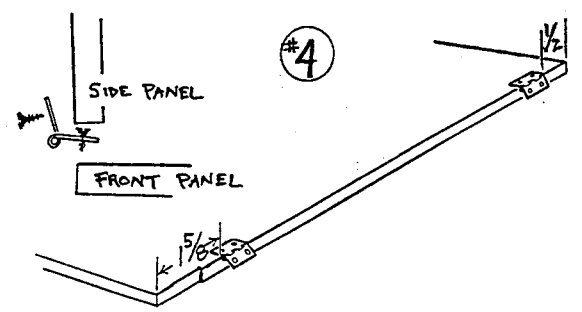
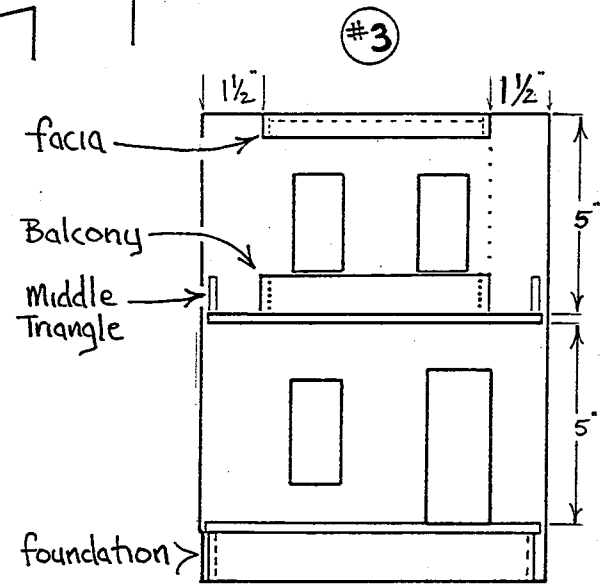
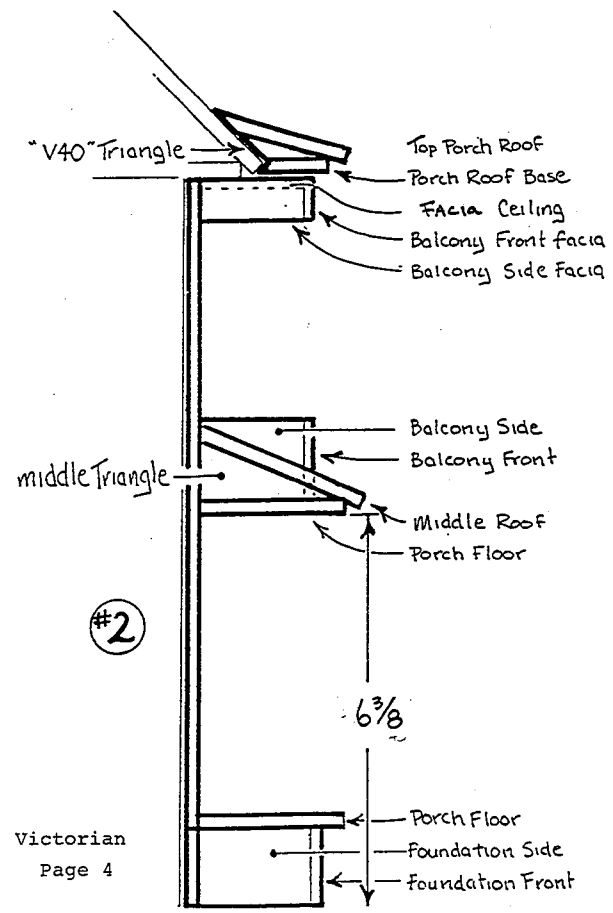
Draw in proper location of dividers before assembly. Stair blinds are for use with the Houseworks stairs which are in the optional finishing components set.

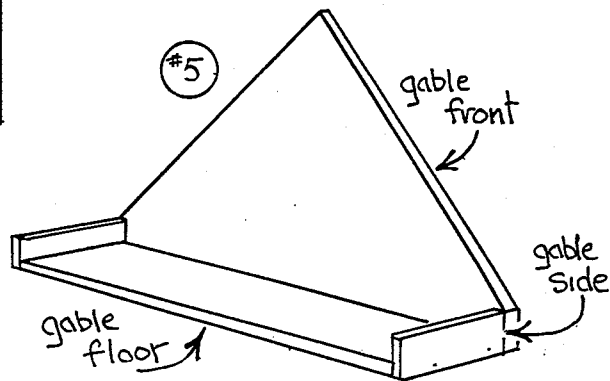
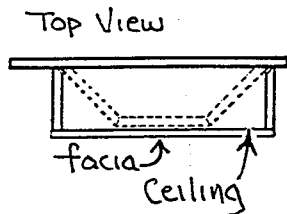
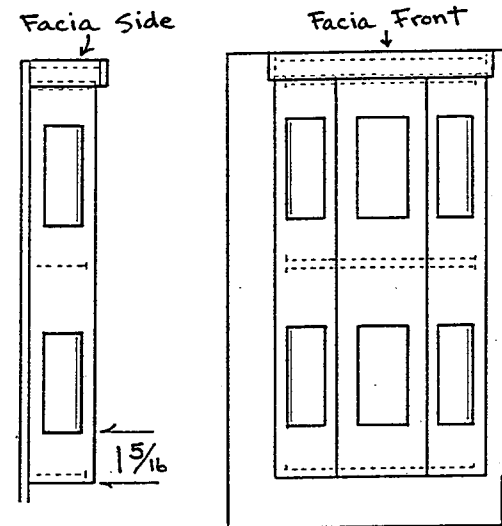
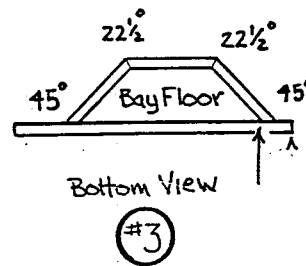
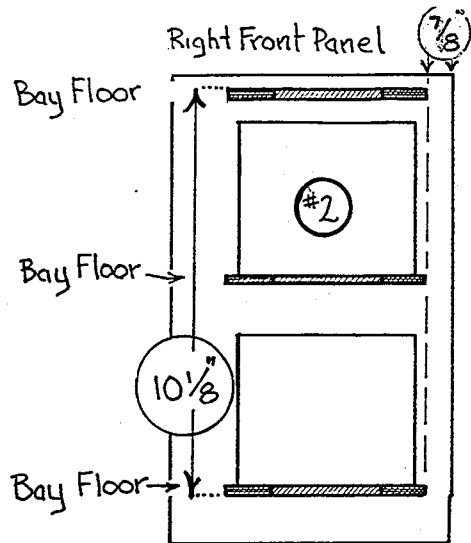
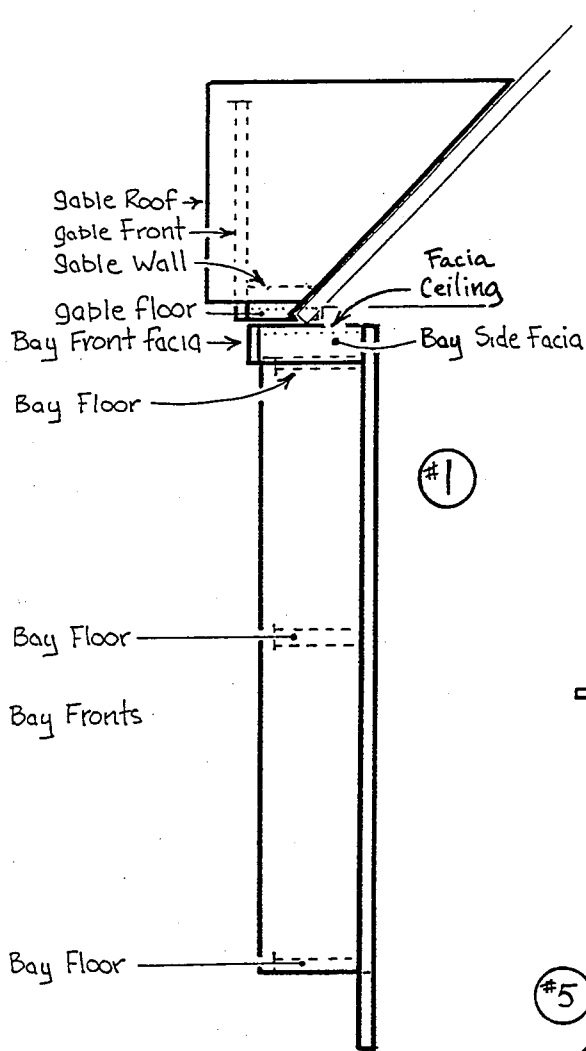




II. Assemble the Left Front

- A. Locate Pack A and assemble porch foundation and one (1) floor as shown in illustration #2. Glue and nail.
 - Front foundation (8-1/4" x 1-1/8") overlaps side foundation (2-1/16" x 1-1/8").
 - Porch floor (8-1/2" x 2-3/8") is flush at back and overlaps foundation evenly elsewhere.
- B. Attach porch base assembly to left front panel, centered side to side and flush at the bottom edge as shown in illustration #3. Glue and nail.
- C. Glue the second porch floor panel spaced as shown in illustration #3.
- D. Glue middle triangles (2-3/8" x 1") flush at the ends of the porch ceiling, see illustrations #2 and #2.
- E. Locate Pack B and preassemble balcony front (5-3/4" x 1-1/4") and sides (1-5/8" x 1-1/4"). Front overlaps sides. Glue to the front panel and middle porch floor using the porch middle roof to locate assembly. The middle roof has a cutout which fits around the balcony assembly.
- F. Glue on the middle roof (see illustration #2).
- G. Locate Pack C and preassemble the fascia front (5-3/4" x 11/16"), sides (1-5/8" x 11/16"), and fascia ceiling (5-5/16" x 1-5/8"), then glue assembly in place as shown in illustration #3.
- H. After drying, nail through the front panel into the porch floors and ceiling.
- I. Attach the "V40" triangles to the porch roof base as shown in illustration #2. The triangles are set flush to the outside edges of the roof base with the angles joining as shown.
- J. Glue this assembly to the front edge of the front roof panel centered side to side over fascia assembly.
- K. Apply glue to the long beveled edge of the top porch roof and to the top of the "V40" triangles. Place the top porch roof in position centered side to side with the beveled edge resting on the front roof panel and tape in place while the glue dries.
- L. Hinges.
 - A. Screw hinges to inner face of the front panels, pin down, spaced as shown in illustration #4.
 - B. Mount front panels, keep the panels tight to the top floor for swing clearance at the bottom.
- M. Steps - assemble and glue as shown in illustration #5.





III. Assemble the Right Front.

- (Inlet at corner is the bottom right corner of panel.)
- A. Glue the bay floors (4-11/16" x 1-3/8" mitered) in place as shown in illustration #2 centered side to side. The top edge of the first and second bay floors are flush with the openings. Let assembly dry.
 - B. Glue and nail Right and Left bay walls (identified by the bevels as in illustration #3) to the floors. Be sure the 1-5/16" window space is at the bottom. Mark the position of the center floor for easier nailing, then glue and nail on the center bay wall.
 - C. Assemble the second facia set from Pack C as you did before in step #G on page 3. Glue this assembly over the top of the bay flush to the top edge of the front panel and centered side to side.
 - D. Attach the hinges and mount the Right front panel as in illustration #4 on page 3.
 - E. Locate Pack D and glue and nail together the gable floor (5-19/32" x 1-1/4"), sides, and front as shown in illustration #5. Glue this assembly to the house roof in a rest position. Protect the bay ceiling with Saran Wrap. Do NOT glue to the third floor of the main house.
 - F. Lay the gable roofs flat, peak edges touching, bevels down. Tape firmly across peak, invert, glue. Glue this assembly to the gable front and house roof. Use brads (pushed in - don't hammer!) and lots of tape to hold in place. Make sure the gable eaves are even. Nail after glue dries.