

Raspberry Parfait Dollhouse Kit

Lilliput® Kit #465
©9/99



These photographs show the closed and opened views of the completed Raspberry Parfait Dollhouse Kit.

Shingles and Clapboard Siding are separately available options

Note: Left and right are identified as viewed from the front of the house.



INTRODUCTION

Congratulations on becoming a new owner of a RASPBERRY PARFAIT dollhouse. We are pleased that you have chosen one of Walmer's LILLIPUT dollhouses to participate in the exciting world of miniatures.

Step-by-step assembly of the unfinished RASPBERRY PARFAIT can be accomplished in several hours. However, if you chose to decorate, electrify or pre-paint individual parts your assembly time will be increased.

If you intend to pre-finish your dollhouse we suggest that you paint the main body of the house after it is assembled and the small parts before they are installed.

If you intend to clapboard your dollhouse consider purchasing the RASPBERRY PARFAIT SIDING AND SHINGLE KIT (#465SS). This kit not only provides the appropriate quantities of siding and shingles for your house but also includes specific additional trim strips needed to complete the siding installation.

You will need several basic tools to assemble your dollhouse. They include a pencil, hammer, square, tape measure, masking tape, medium weight sand paper (120 or 180 grit), yellow or white glue hand drill with a 1/16" bit and a screw driver with a #1 phillips tip.

The following guidelines have proven to be helpful when building the RASPBERRY PARFAIT dollhouse kit.

READ the complete instruction booklet before you begin assembly

ACCURATELY identify parts and UNDERSTAND their orientation relative to right and left, top and bottom and front and back.

TEST ASSEMBLE parts prior to permanent assembly whenever possible.

WORK on a level surface.

FIRMLY support parts that are being nailed together.

W-465 Raspberry Parfait Parts List:

1)	#1050	Upper Floor (ctr)	3/8	22 3/32	11 3/4	route ctr.
1)	#1052	Third Floor (blank)	3/8	22 3/32	11 3/4	
1)	#6220*	Right Front	3/8	17 7/16	14 7/8	route
1)	#6221*	Left Front	3/8	17 7/16	7 1/2	route
1)	#6510	Back Wall	3/8	17 31/32	22 3/32	
1)	#1053	Base Floor	1/4	22 3/32	11 3/4	
2)	#1054*	Colonial Endwall	1/4	23 15/16	11 3/4	peaked
2)	#1060	Room Partition	1/4	8 5/32	9 3/8	
1)	#1065	Stair Base	1/4	11 5/8	2 1/4	end bevels
1)	#6511	Rear Roof	1/4	23 3/4	8 1/2	
1)	#6512	Left Gable Roof	1/4	5 7/8 top	8 3/8 tall	triangle
1)	#6513	Right Gable Roof	1/4	5 3/4 top	8 3/16 tall	triangle
1)	#6514	Front Roof	1/4			
1)	#6515*	Gable Triangle	1/4	5 7/8 tall	11 3/4 base	
Pr.)	#465Gb	Breakers Gingerbread	1/8			
1)	#1541	Front Step	3/4	4	1 3/4	
11)	#1540	Steps	3/4 x 3/4 L	2 1/4		
5)	#LWX	Window Kits				

Window Spacers Bag

10)	#1582	Interior spacers	1/8 x 3/16	4 1/2		
20)	#1583	Interior spacers	1/8 x 3/16	2 1/2		

Flower Box Bag

5)	#2050	Flower Box				
15)	#2050F	Bunches of Flowers				
1)	#1585	Colonial Apex Block	3/4	1 7/16		triangle

Longs

1)	#6550	Ridgepole	3/4 X 3/4	21 7/8		
2)	#1510	Underframe	1/2 x 1/2	22 3/32		
1)	#6551	Left End's Corner	1/2 x 3/4	18 3/8	groove	mitered
1)	#6552	Right End's Corner	1/2 x 3/4	18 3/8	groove	mitered
2)	#1567	Front Molding ("Hinge Strip")	1/2 x 17/32	17 7/16	groove	
1)	#6554	Rear Roof Hinge Strip	3/8 x 3/4	22 3/32		
1)	#6555	Front Roof Stiffener	3/8 x 11/16@45°	21 7/8		
1)	#6556	Rear Roof -Top	1/4	23 3/4	1	

Shorts

2)	#1511	Underframe	1/2 x 1/2	10 3/4		
1)	#1530	Stair Side Board	1 1/8 x 1/8	mitered// (edge:11 3/16)		
4)	#6557	Front Backer Strip	1/2 x 3/16	7 7/8		
6)	#1572	Glue Strip	3/16 x 3/16	6		
1)	#6558	Gable Trim	1/2 x 1/8	11 3/4	mitered/\	
2)	#6559	Inner Eave	1/2 x 1/4	8 13/16	end bevel ¹	

Door Box:

1)	#1015	Door				
1)	#2018	Octagon Window				
1)	#1018A	Landing	Raised Panel	3 7/8		
1)	#1018B	Landing	Raised Panel	2 3/4		

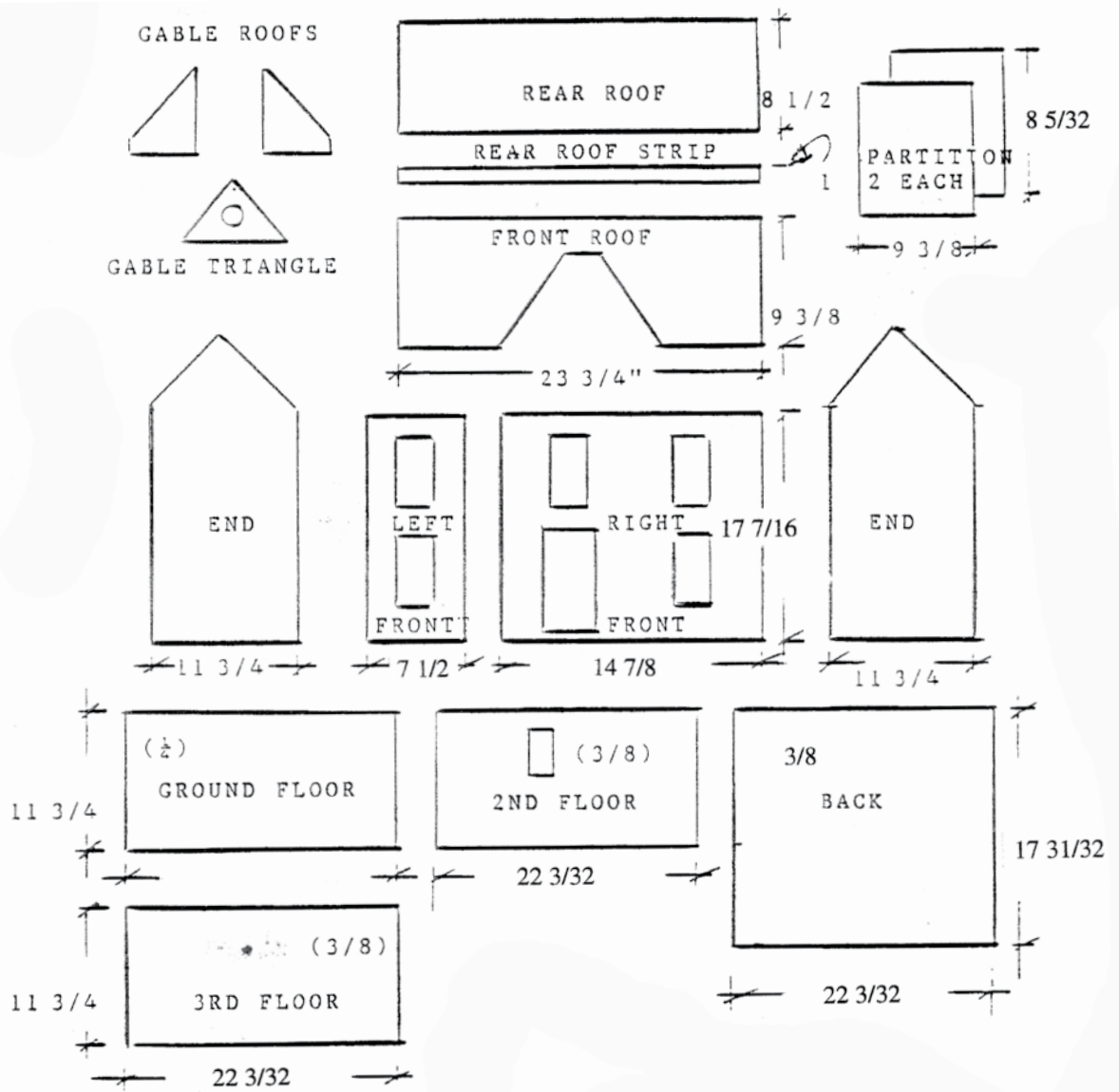
* This kit is available in either Smooth Plywood (SP) or milled MDF (MM). MM kits have a clapboard profile cut into MDF exterior walls, but are otherwise the same.

Part Numbers for MM walls:

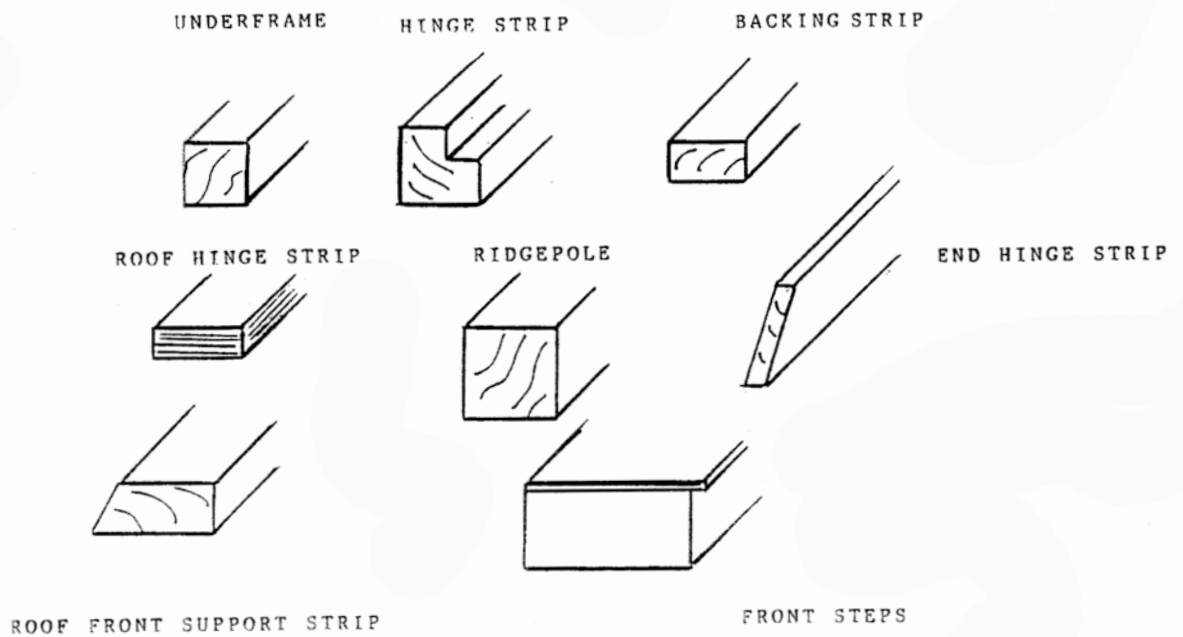
6210	Right Front
6211	Left Front
1013	Colonial Endwall
6519	Gable Triangle

Hardware Bag

50)	5/8 #18	Nails
6)	1 1/4 #300	Hinges
18)	1/2 #5	Screw
10)	3/8 #5	Screw
2)	3/4 #5	Screw
1)	Mag. Catch & n Strike	



SOLID WOOD PARTS



STEP #1 SUBASSEMBLY OF THE INTERIOR STAIRS

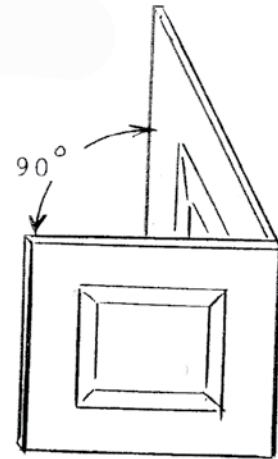
Place the beveled ends of the plywood stair base "down" and run three liberal beads of white glue the length of the long, top surface. Place the eleven steps, edge to edge, on the base as shown. While the glue is still fluid, align the top and bottom step edges with the tips of the stair base. Evenly space the remaining nine steps. Insure the assembly is on a level surface and allow to dry.



Once the steps are firmly attached to the stair base glue the stair side board to the right side of the assembly as illustrated.

STEP #2 SUBASSEMBLY OF THE LANDING RAIL

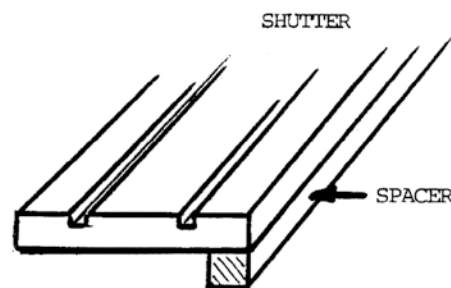
Glue the two pieces of the raised panel landing rail (2" x 3 7/8") and (2" x 2 3/4") together at a right angle as illustrated.



STEP #3 SUBASSEMBLY OF THE SHUTTER AND SHUTTER SPACERS

The function of the shutter spacers is to hold the styrene window panes in place by filling the "gap" between the (exterior) installed shutters and the (interior) installed window trim.

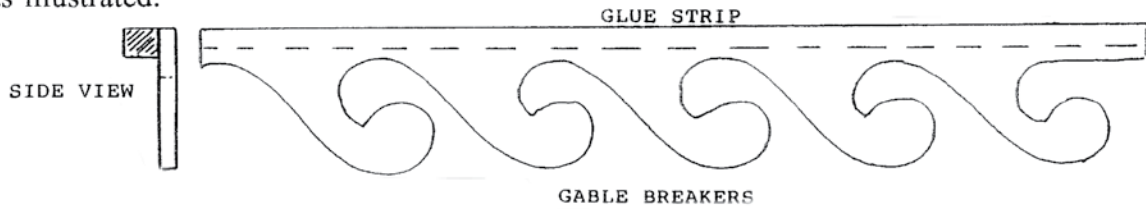
Glue one spacer to the back edge of each shutter as illustrated. Allow to dry.



NOTE If clapboard siding is to be installed larger shutter spacers are needed to compensate for the increased thickness of the front panel.

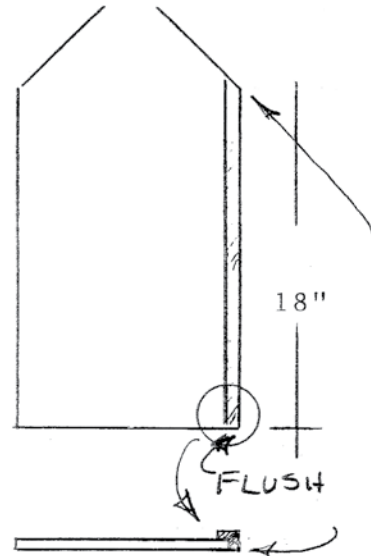
STEP #4 SUBASSEMBLY OF THE GLUE STRIPS AND GABLE BREAKERS

Glue the 3/16" X 3/16" glue strips to the top, back face of the gable breakers as illustrated.



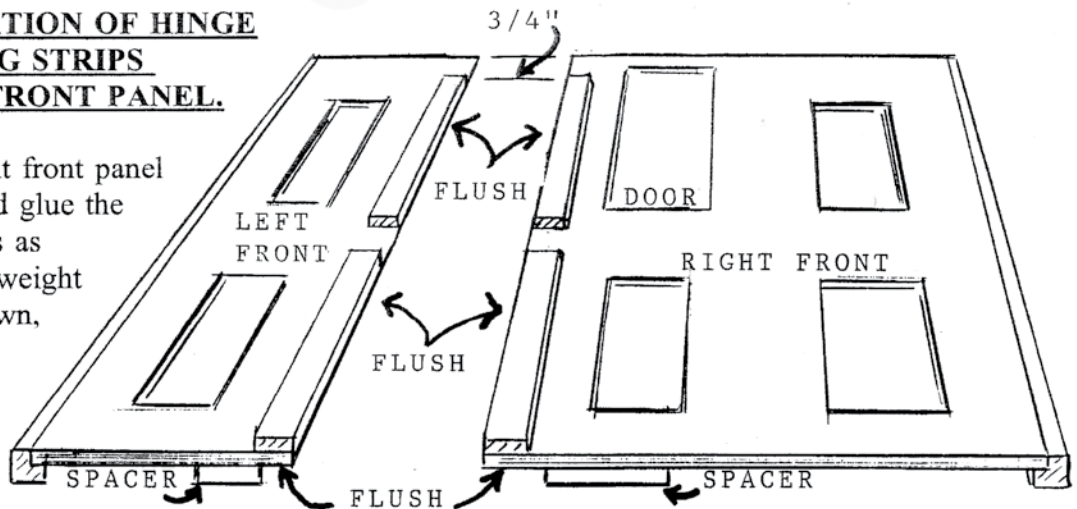
STEP #5 INSTALLATION OF THE END'S CORNERS

Glue the End's Corners to the front edges of the Endwalls, flush at the tops and interior surfaces. Make a left and a right set. Clamp, tape, or weight to deep the joints tight until the glue is dry.



STEP #6 INSTALLATION OF HINGE STRIP AND BACKING STRIPS ONTO THE RIGHT FRONT PANEL.

Carefully orient the right front panel as illustrated. Align and glue the hinge and backing strips as shown. Clamp, or add weight and use a spacer, to keep the joints tight and "square" while the glue dries. Insure that the top backing strip is flush with the panel's long edge and top and that the bottom strip is raised 3/4" up and flush with long edge.



STEP #7 INSTALLATION OF THE HINGE STRIP AND BACKING STRIPS ON THE LEFT FRONT PANEL

Carefully orient the left front panel as illustrated. Use the same procedures described in Step #6 to glue and clamp. Insure that the backing top strip is flush with the panel's long edge and top and that the bottom strip is raised 3/4" up and flush with long edge.

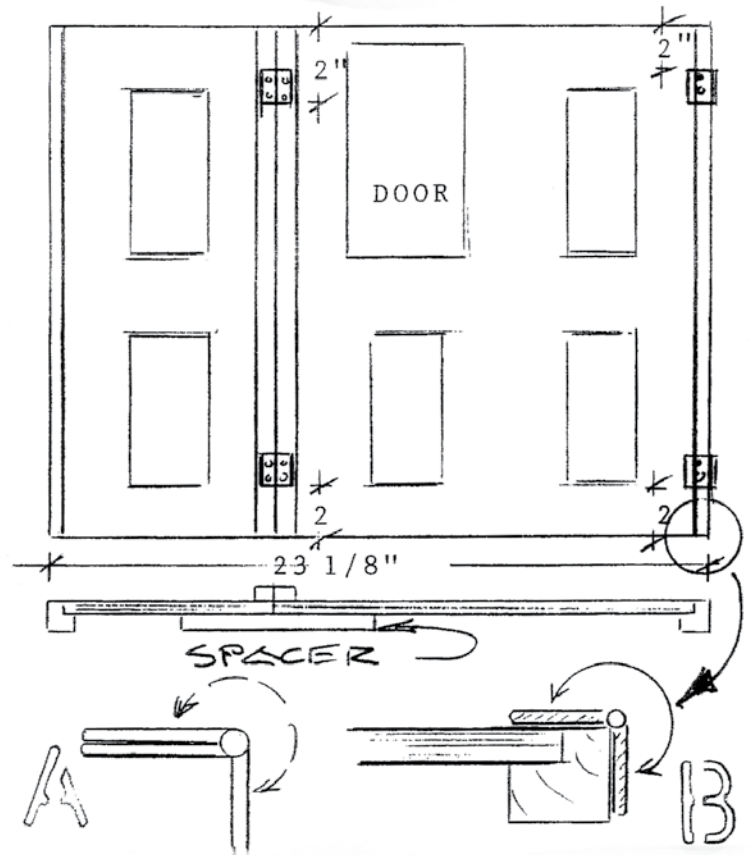
STEP #8 INSTALLATION OF HINGES ONTO THE FRONT PANELS

Our assembly pro says: "I like to hinge the fronts from both sides instead of having them fold in the middle. Look the product over carefully and make your own choice for hinge placement."

Align the two front panels as illustrated. Specifically insure that the "inside" of the panels are "up" and the door opening is where shown. You will need to place a spacer beneath the backer strip joint (where the two panels meet) to make the assembly level.

Locate the four hinges 2" from the top and bottom of the panels on the backing and hinge strips.

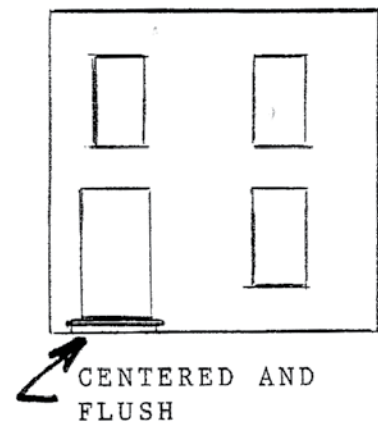
Holding the two panels tightly together and centering the hinge pins on the seam between backing strips pre-drill, with a 1/16" bit approximately 1/8" deep, eight screw holes for the two hinges. Install screws.



Install the hinges on the right front panel hinge strip by folding the hinge leaves as illustrated in diagram A and placing them around the hinge strip as illustrated in B. Drill pilot holes and install screws.

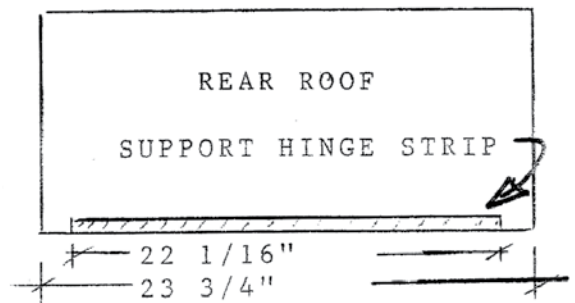
STEP #9 INSTALLATION OF THE FRONT STEPS ON THE FRONT

Clamp the front steps to the front panel. Center the block under the door opening and flush it with the bottom of the panel. From the back of the panel pre-drill and insert two 1/2" screws without glue if you later intend to (remove and) paint the steps or to install clapboard.



STEP #10 INSTALL ROOF HINGE STRIP ON REAR ROOF PANEL

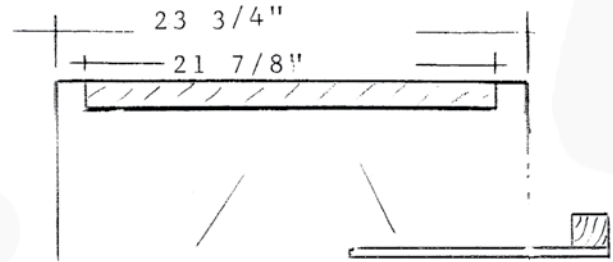
Glue the 22 1/16" long roof hinge strip to the underside of the large, rectangular rear roof panel. Center the hinge strip, end to end, and make it flush with the panel's edge. Clamp until dry.



STEP #11 ATTACH THE RIDGEPOLE TO THE FRONT ROOF

Glue the Ridgepole ($3/4 \times 3/4 \times 21 \ 7/8$) to the underside of the Front Roof, flush at the top edge and centered side-to-side. Tape, weight, or clamp until dry.

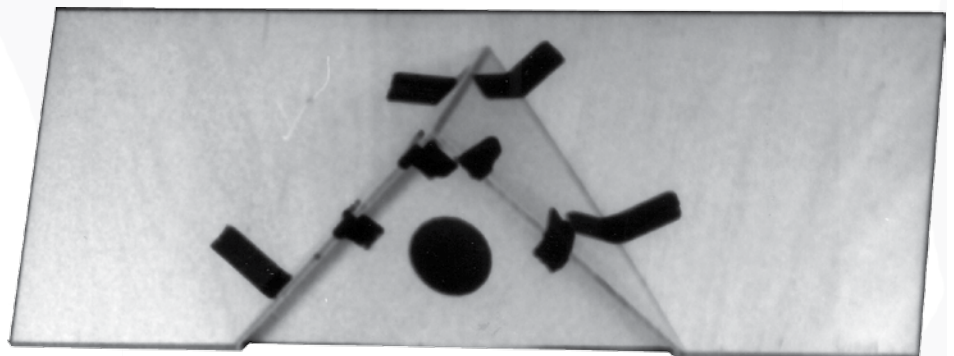
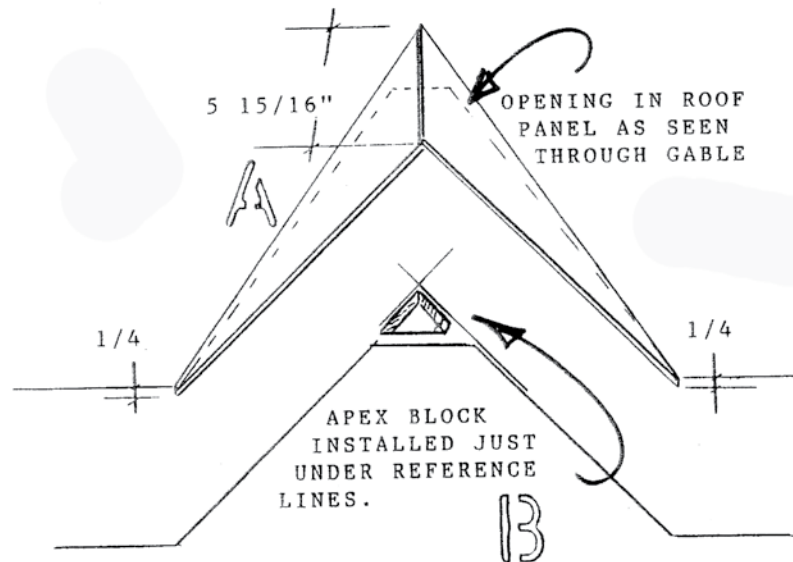
Pro note: I delay this step until the roof and fronts are installed on the house for the best possible fit.



STEP #12 INSTALLATION OF THE APEX BLOCK AND GABLE ROOFS

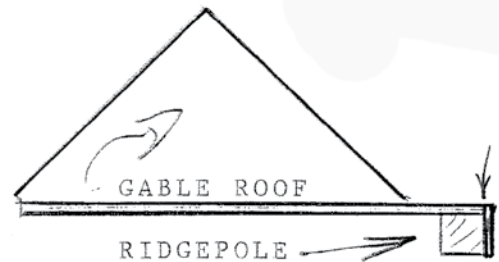
"Mock up" (without glue) the gable roof configuration to establish the location of the apex block. Place the two longest gable roof panel edges against, and in line with, the cut out in the front roof panel. Adjust the panels so that the larger gable roof overlaps the smaller gable roof forming a $5 \ 15/16$ " ridge line. The lower gable roof tips should coincide with, and "step out" $1/4$ " at, the bottom edge of the front panel. Once this alignment is achieved carefully remove each roof, in turn, and draw a line along the underside of the opposite, in place, roof. The intersection of these two line establishes the location of the apex block.

Glue the apex block (point up and bevels toward you) just under the intersection of the two lines. Hold in place with masking tape until glue dries.



Glue the gable roofs to the front roof panel. Use the triangular gable front (with round opening) as a template without glue to support the gable roof assembly.

Use plenty of masking tape and gentle weight to "clamp" the parts until glue dries.

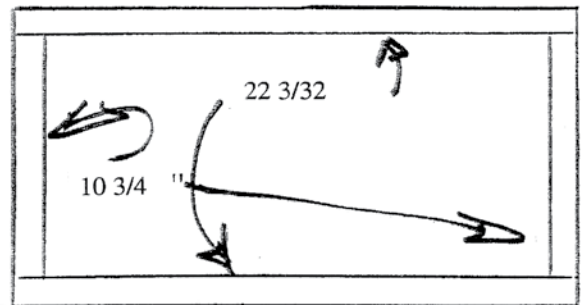


STEP #13 GLUE THE REAR ROOF-TOP TO THE FRONT ROOF

Glue the Rear Roof -Top to the Front Roof and Ridgepole, flush on the front surface of the Front Roof (the Rear Roof -Top overlaps the Front Roof), and lined up on both ends.

Step #14 ATTACH THE UNDERFRAME TO THE BASE FLOOR

Glue and tape, weight, or nail the Underframe to the bottom of the Base Floor, lined up on the edges.

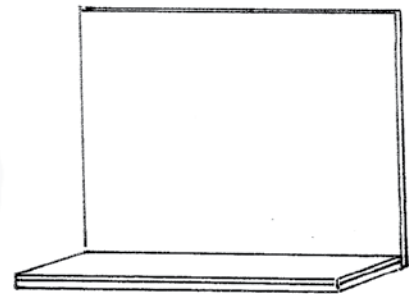


STEP #15 ATTACH THE BACK TO THE BASE FLOOR ASSEMBLY

Glue and nail the Back to the Base Floor and Underframe, flush on the bottom and lined up on both edges.

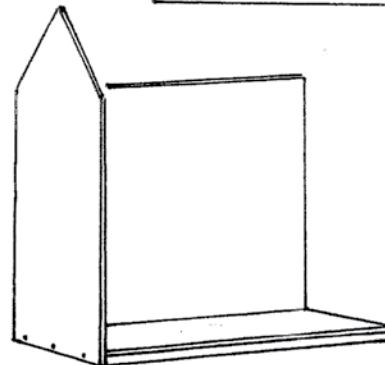
STEP #16 ATTACH ONE ENDWALL

Glue and nail an Endwall to the Base/Back assembly, carefully lined up *all the way* across the bottom and back edges.



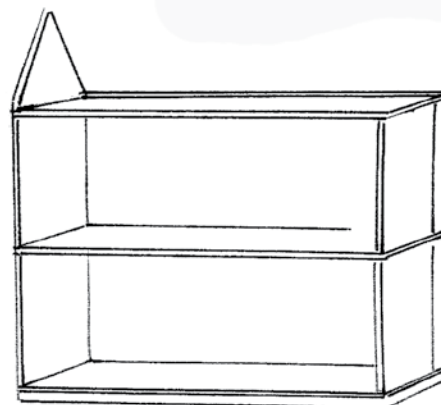
STEP #17 ATTACH THE MIDDLE FLOOR

Tape a Partition to the Endwall touching the Base and the Back. Tape another Partition to the Base and Back at the open end of the house. Glue and nail the Upper Floor to the Endwall and Back, located by the Partitions and with the stair hole toward the **back and left**. Measure from the bottom of the house to the center of the floor, and use that measurement to locate the nails for the Endwall. Check to be sure each nail has gone in straight before the last hammer-strike so you can still grab the head with pliers if you need to pull it out. Move the Endwall's Partition to the center of the floor to hold the floor straight as you nail through the Back.



STEP 18 ATTACH THE THIRD FLOOR

Repeat the operations of step #17, this time attaching the Third Floor.

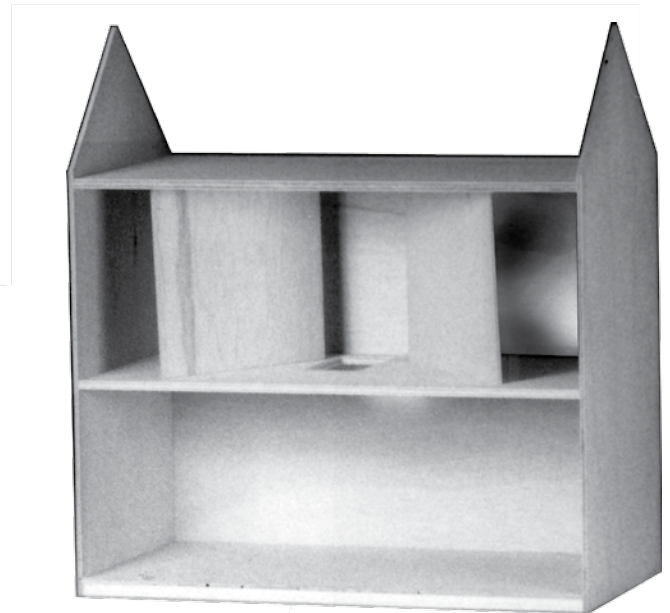
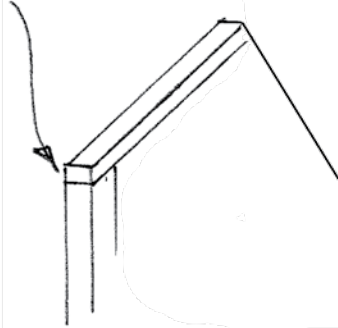


STEP #19 ATTACH THE RIGHT ENDWALL

Stand the house on its left end. Tape the Partitions between the Floors to hold correct spacing. Glue and nail the Right Endwall to the Base, Floors, and Back, lined up all around. Stand the house upright and make sure everything is straight and tight as the glue dries.

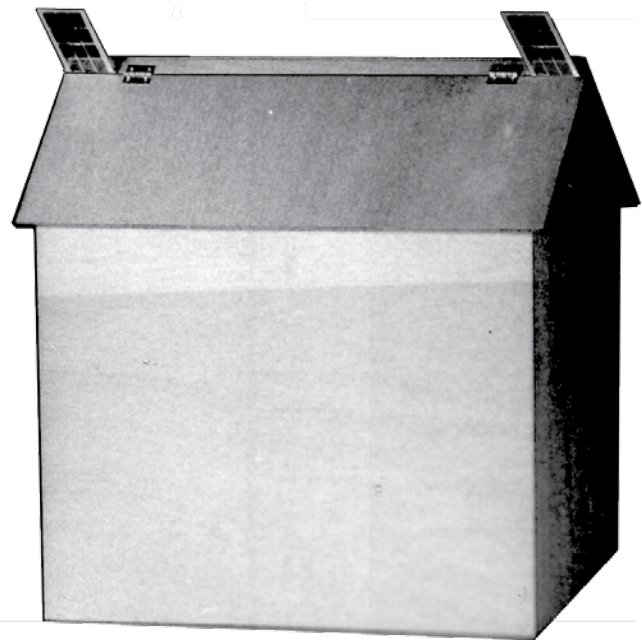
STEP #20 ATTACH THE INNER EAVES

Glue and tape the Inner Eaves to the top angled edge of the sides, flush on the inside and front edges.

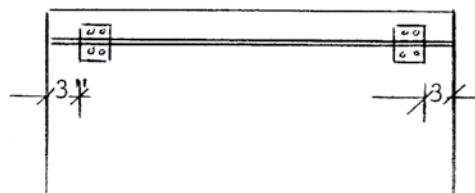


STEP #21 INSTALLATION OF THE REAR ROOF AND FRONT ROOF PANELS

Place the front roof assembly on the gable ends WITHOUT GLUE. The ridgepole will fit between the tips of the two ends (with clearance) and the rear roof strip will wrap over the points of the ends. Apply glue to the rear sloping edges of the ends and install the rear roof panel with its hinge strip inside the house and "up" toward the rear roof strip. Use two of your window panes as spacers to establish a gap between the two roof assemblies. Carefully nail through the rear roof panel into the edges of the ends.



Install two roof hinges 3" in from the roofs' outer edges. Open the hinges and lay them flat with their hinge pins directly over the seam between the two panels. Drill pilot holes and install one screw in each hinge. Test the open/close action of the front roof panel. Make any necessary adjustment for proper function and then install the remaining screws.

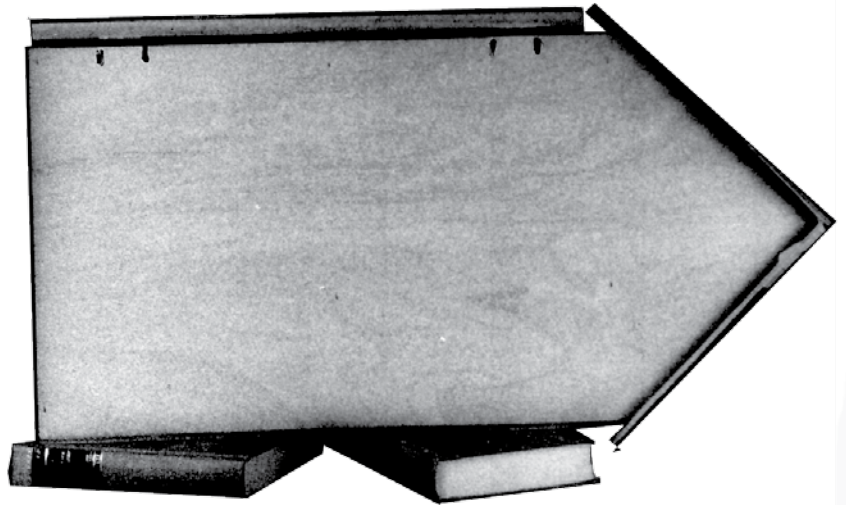


STEP #22 INSTALLATION OF THE HINGED FRONT

Precise alignment and careful execution of the following procedure will simplify the installation of the front.

Lay the house on its back. You will need to put "blocks" under the back to avoid damaging the rear roof panel.

Place the front on the house so that it is **Just** below the lowest point of the (closed) roof front and centered on the end hinge strips. Make accurate marks on the hinge strip above and below each hinge. ALSO note how far each hinge pin protrudes beyond the outside edge of the hinge strip.



Lift the front off the house and remove one of the hinges. Using your reference lines, and your recollection of how far each pin protruded, re-position the hinges on the hinge strip. Mark the center of the top hinge holes and drill pilot holes.

Re-install the hinge on the front and stand the house upright. Install the front on the house using the top hinge holes only. **NOTE** - tighten screws enough so hinges do not rotate with the weight of the front panel. Gently operate the front. It should swing smoothly maintaining the desired alignment.

If the front needs adjustment move the appropriate hinge and insert a single screw in the bottom hinge hole. As before, drill a pilot hole so positioning remains accurate.

Once the front is properly aligned drill remaining pilot holes and install all remaining screws.

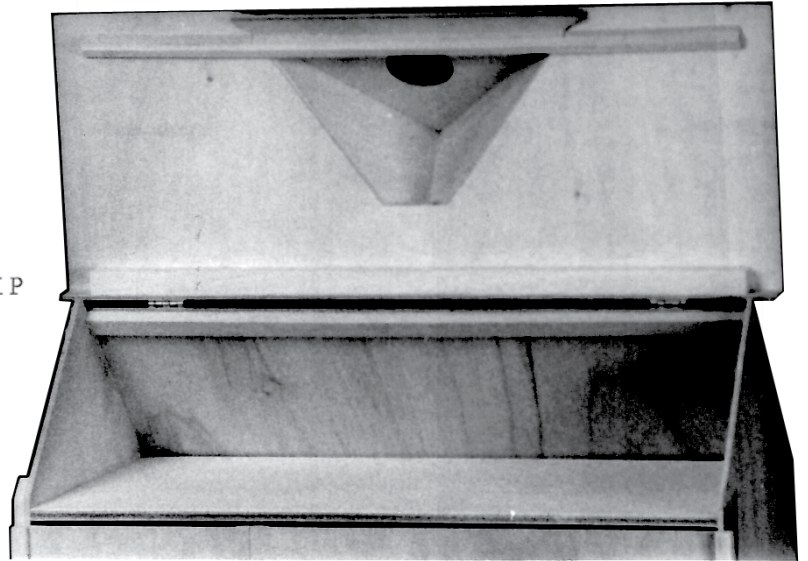
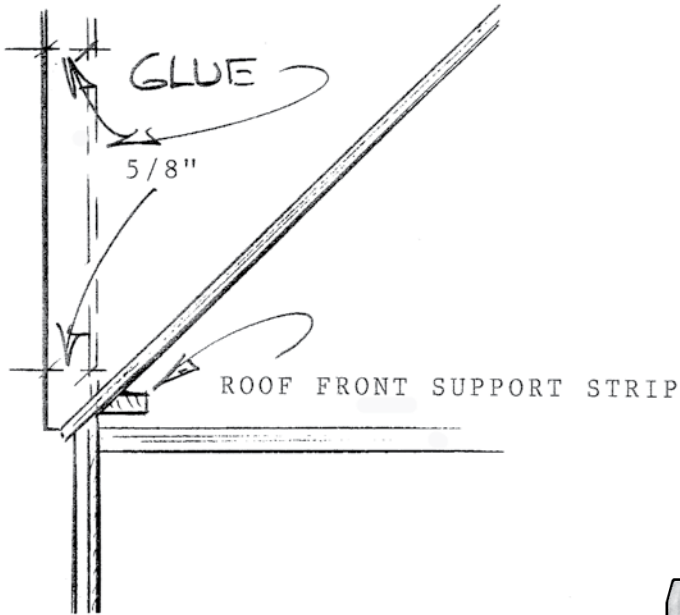
STEP #23 INSTALLATION OF THE GABLE TRIANGLE AND ROOF FRONT SUPPORT STRIP

With the house in the upright position and the front closed, place the gable triangle (**WITHOUT GLUE**) under the gable roofs in the same vertical "plane" as the hinged front. Note the distance the gable triangle is inset from the front edges of the gable roofs at the gable triangle/hinged front seam. Insure this inset distance remains constant and draw a reference line along the undersides of both gable roof panels.



Apply glue to the angled edges, and using your lines as a reference install the gable triangle. Use masking tape to clamp until glue dries.

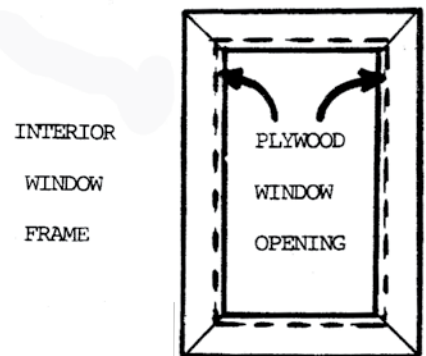
Install the front roof support strip on the back of the roof front directly behind, and in contact with, the gable triangle. Apply glue to the beveled edge of the support strip, insure it is centered, left to right, and parallel with the lower front roof edge, and clamp.



STEP #24 INSTALLATION OF THE INTERIOR WINDOW TRIM

Install interior window trim around the routed window openings on the inside of the hinged front. Install four pieces of interior window trim around each opening as illustrated. Note how the installed trim protrudes into the pre-cut window opening approximately 1/8" on all four sides.

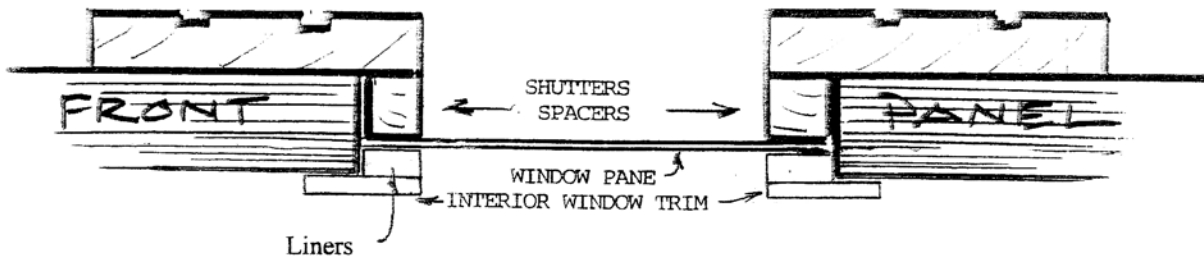
NOTE: This is the best time to install clapboard siding on your house.



STEP #25 INSTALLATION OF FRONT DOOR, WINDOW PANES AND EXTERIOR TRIM AND GINGERBREAD

~ Install the front door from the outside of the house. Apply glue to the back side of the door frame and insert in the door opening.

~ Place the window panes (window locks up!) in the routed openings from the outside of the house. Then glue shutters (with attached spacers) in the window openings as illustrated. Glue flower boxes under, and lintels over the pairs of shutters.



~ Glue octagonal window in round gable opening from the exterior.

~ Glue gable trim under front and side roof gables as illustrated in the photograph on the front of these instructions.

STEP #26 INSTALLATION OF PARTITIONS INTERIOR STAIRS, LANDING RAIL, AND INTERIOR DOOR TRIM

Glue partitions to the left of the stair opening on the ground and second floors. Refer to the interior photograph on the front of these instructions to confirm location.

Glue the interior stairs in the routed opening in the second floor and against the ground floor partition. Place the upstairs rail around the second floor stair opening. Glue is optional.

Glue interior door trim around the front door.

Glue interior window trim around the octagonal window.