

ASSEMBLY INSTRUCTIONS

Congratulations on selecting a miniature house kit manufactured by Dura-Craft, Inc., the leader in the industry. We pride ourselves in our high quality and workmanship. Each piece is graded and sorted at several different stages to ensure that you receive the finest quality.

A Dura-Craft miniature house is a complete kit. You will not have to make separate purchases of items like windows and shingles which are a basic part of your house. Your finished house will be ready for painting, wallpapering, and decorating.

READ THIS BEFORE STARTING ASSEMBLY!

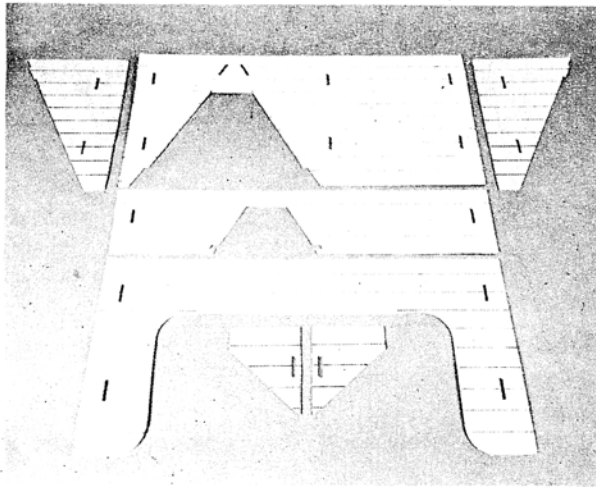
The following tips will help you avoid problems when you build your miniature house.

1. Save the box. The photo will be very helpful during assembly.
2. Do not remove any pieces from their punch sheet before they are called for in the instructions.
3. Read through the instructions carefully once to get a feel for the assembly process and to gain familiarity with the parts.
4. Follow the instructions in order.
5. If you cannot release a part from its board with moderate pressure, then carefully cut it loose with your utility knife. Always cut from the front side of the board where the cut lines are clearly visible.
6. If any parts are missing or damaged, they can be replaced by Dura-Craft quickly. Please write or call and give us the name and sheet number of the part or parts that you need. We have included a "Missing and Broken Parts Replacement Form" to assist you.
7. We recommend the use of Aleene's "TACKY" glue to construct your house. This glue helps hold parts in place while it dries, and it dries clear. It can be found at most craft supply stores. Any white household glue or woodworking glue may be substituted if desired.
8. Dura-Craft has done everything possible to ensure that your kit will look good when it is complete. We have included pine moldings to strengthen the house and to cover all of the mair wall and floor edges, and we have designed the kit so that slot and tab blemishes will be hidden when the kit is finished. However, the final quality of your house will depend to some extent on the care you take in preparing each piece for assembly. Sanding is optional, but it will improve your house.

9. You will need the following materials to assist you in the assembly of your dollhouse:

- Glue (see our recommendation in paragraph 7 above).
- Utility knife.
- Sandpaper (optional).
- Masking tape.

FIRST, locate all roof pieces (front & rear roofs, lower roof, right & left large gable roofs, and right & left small gable roofs – sheets CB-3, 4, 6, 8, & 9). Lay them out face up (the side where cut marks are clearly visible) and draw parallel guide lines one inch apart starting at the top and working down (see photo). These guide lines will be used later for positioning the shingles.

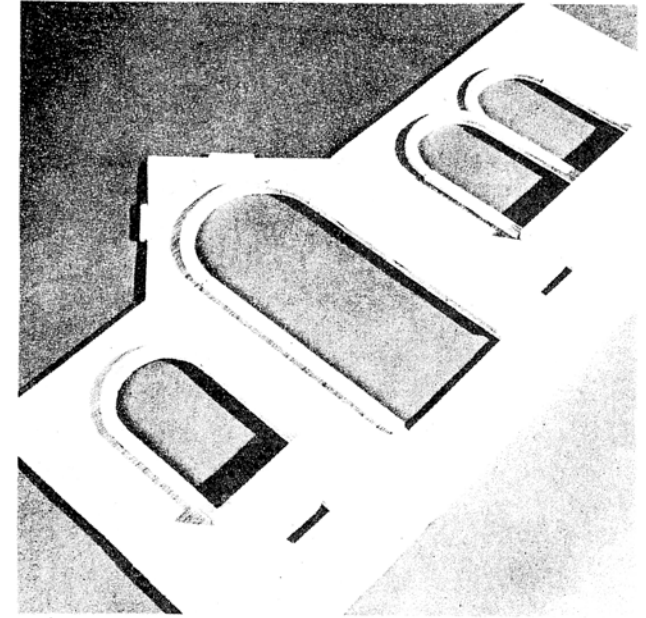


Subassembly No. 1

Window and door trim.

1. Locate upper and lower front walls (sheets CB-1 & CB-5) and right and left side walls (sheets CB-4 & CB-6).
2. Locate all semicircular door and window trim (CB-1, 12 pcs.) and all window sills (CB-3, 1 pc.; CB-8, 4 pcs.).
3. Cut universal trim into the following lengths:
 - 22 – 2 $\frac{5}{8}$ inches
 - 4 – 2 $\frac{1}{2}$ inches
 - 4 – 3 inches
 - 4 – 1 $\frac{1}{2}$ inches
 - 4 – 5 $\frac{3}{8}$ inches
 - 1 – 4 $\frac{3}{4}$ inches
4. With walls lying flat on your work surface, outside facing up (the side where cut marks are clearly visible), glue all window sills in place. Next glue on the window side trim (the 2 $\frac{5}{8}$ inch pieces you cut earlier). The inside edge of the trim should be flush with the edge of the window. Finally, glue the semi-circular window trim in position.

5. Glue the semi-circular door trim in position. Glue the door side trim (the 5 $\frac{3}{8}$ inch pieces) on in the same manner that you did the window side trim. The side trim should end approximately $\frac{1}{8}$ inch above the bottom of the doorway. The rectangular window is trimmed with two 3 inch trims for the top and bottom, and two 1 $\frac{1}{2}$ inch trims for the sides.

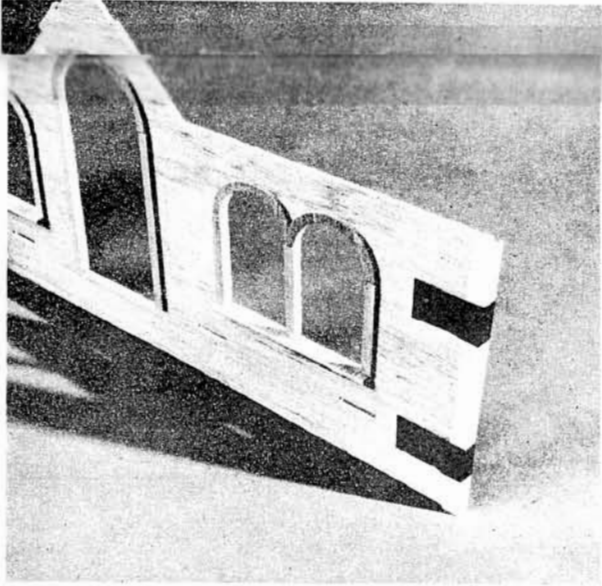


NOTE: If you intend to paint and/or wallpaper your house, you may wish to skip steps 6, 7, & 8 until the main structure of your house is complete and painting and wallpapering is done.

6. Turn the wall panels over. Locate the window sheet and cut out the windows on the dotted line (use scissors). Run a very thin bead of glue around the edge of a window opening. Now center the window over the opening. Use a pencil point to gently push the window down against the glue all around the window opening. Repeat this process for each window.
7. Glue the inside window trim in place over the plastic windows. Start with the semi-circular top trim, then the 2 $\frac{5}{8}$ inch side trim, and finally the 2 $\frac{1}{2}$ inch bottom trim. Bottom trim for the twin window is 4 $\frac{3}{4}$ inches. The rectangular window requires two 3 inch trim pieces for top and bottom and two 1 $\frac{1}{2}$ inch trim pieces for the sides.
8. Glue the inside door trim in position. Start with the semi-circular top trim and then position the two 5 $\frac{3}{8}$ inch side trim pieces.
9. Sandwich the door window between the door (CB-5) and the door molding (CB-3) and glue them together. Place this assembly under a weight until dry.

Main Structure Assembly.

1. Locate the two 7½ inch corner posts. Glue a corner post to each edge of the lower front wall panel. Make sure that the unraised groove in each post is toward the back of the wall panel and that the corner post is flush with the bottom edge of the wall. Tape into position until the glue dries.



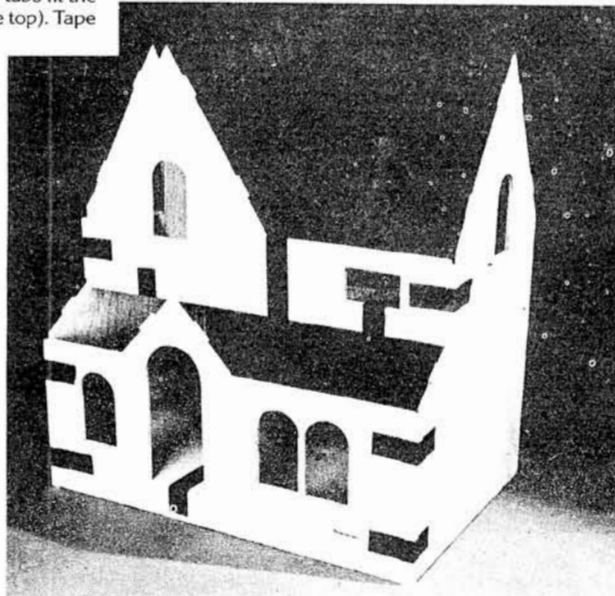
NOTE: Steps 2 & 3 are not complicated, but they require some manual adeptness. If you have a friend, neighbor, or relative who would like to help hold parts in place during these steps, you will appreciate having the extra set of hands.

2. Locate your left and right side walls, the front roof, and the first and second floors (CB-2 & CB-7). Run a bead of glue along one edge of the first floor and position the appropriate side wall so that the tabs fit the slots. Be sure that the floor is right side up (cut marks to the top). Tape into position. Repeat the process with the opposite wall.

3. Run a bead of glue along both edges of the second floor and place in position so that the tabs fit the slots. Be sure that the floor is right side up! Tape securely. Position the front roof panel so that its slots fit over the side wall tabs. **DO NOT GLUE!** This will help hold the house square while the glue dries on the first and second floors.

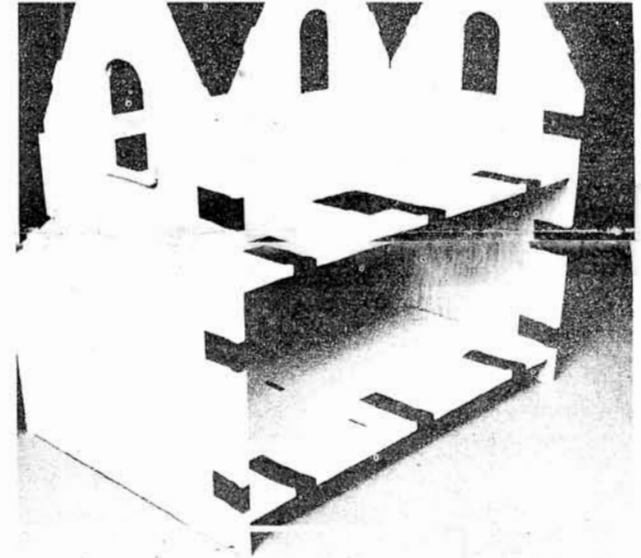


4. When the glue in step 3 is completely dry, remove the front roof panel. Run a bead of glue down the grooves in the corner posts on the lower front wall and along the front edge of the first floor. Push the corner posts onto the side wall panels making sure that the first floor tabs fit into the lower front wall slots. Tape until dry. **NOTE:** The first floor is NOT flush with the bottom of the door opening and you should not attempt to push it down. Later the front porch will butt against the first floor through the door opening.

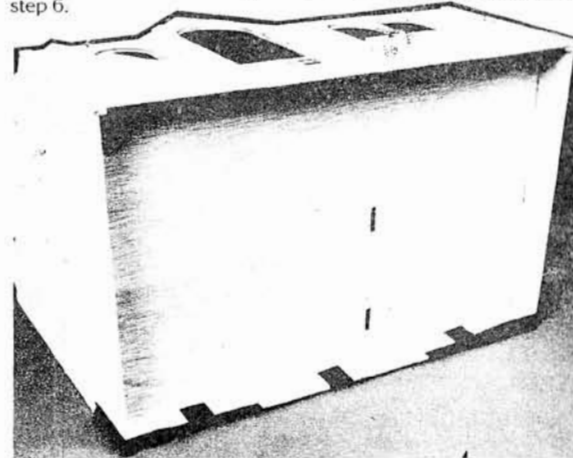


5. Run a bead of glue along the front edge of the second floor. Now, position the upper front wall panel so that the tabs on the sides fit into the slots in the side wall panels and the slots fit over the tabs in the second floor panel. You will have to bow the wall slightly to make this work, but the wall should not remain bowed when it is properly in position. Run a bead of glue down both grooves in the 3½ inch corner posts and slide them into position over the edges of the side walls and the ends of the upper front wall. The bottom of the corner post should rest against the second floor. Wipe away any excess glue with a slightly damp cloth, and then tape until dry.

6. When the glue in step 5 is dry, cut rear trim pieces to fit the back edges of each side wall. The top end of the rear trim may be cut to match the slope of the roof (see photo). Now cut two pieces of rear trim to fit on the back edges of the first and second floors. Glue them in place and tape until dry.

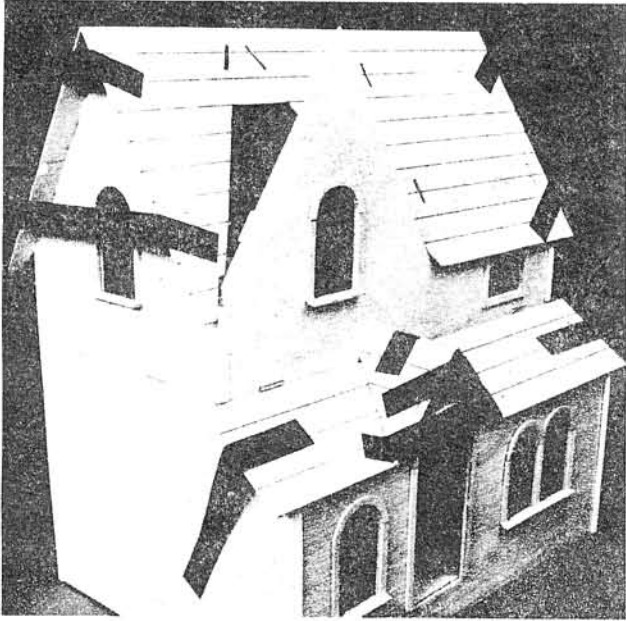


7. When the glue from step 6 is dry, remove the tape and turn the house on its back. Locate the rear floor support (CB-5) and glue it in place under the first floor and against the rear trim that you positioned in step 6.

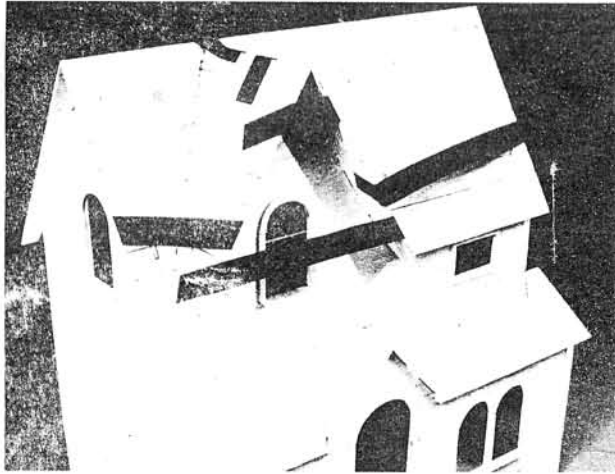


NOTE: If you intend to paint and wallpaper your house, now would be a good time to do it when the roof pieces are not in the way. However, if you also intend to electrify your house, you should not wallpaper or paint the interior until the house is completely assembled. When you complete the painting and wallpapering, go back to steps 6, 7, & 8 in Subassembly No. 1 before going on to step 8 below.

8. Return the house to its upright position.
- Glue on the lower roof piece.
 - Glue the small gable roof pieces into position on the small gable and lower roof.
 - Glue on the front and rear main roofs.



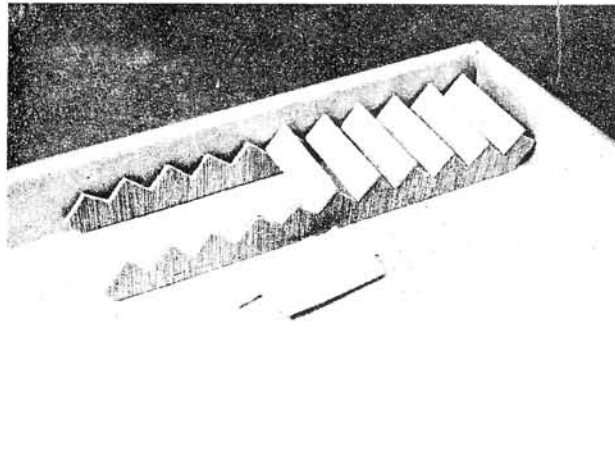
10. Glue the large gable roof pieces in position and tape securely. It may be necessary to hold these pieces back against the main roof until the glue sets (see taping method in photo).



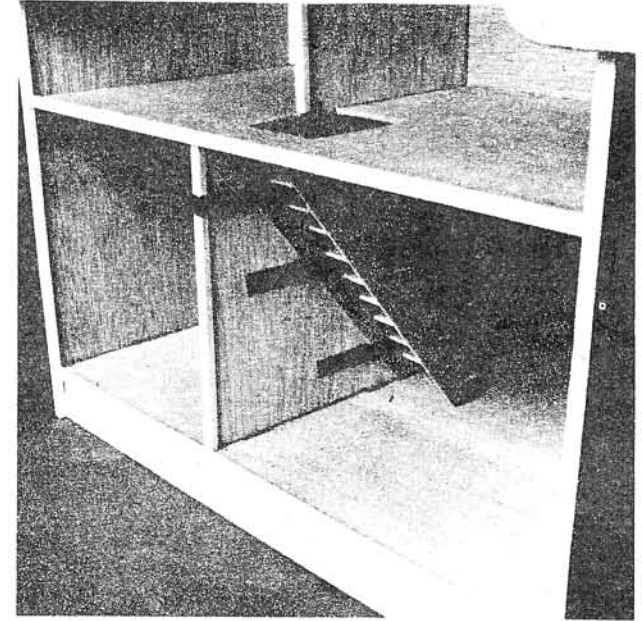
Subassembly No. 2

Staircase.

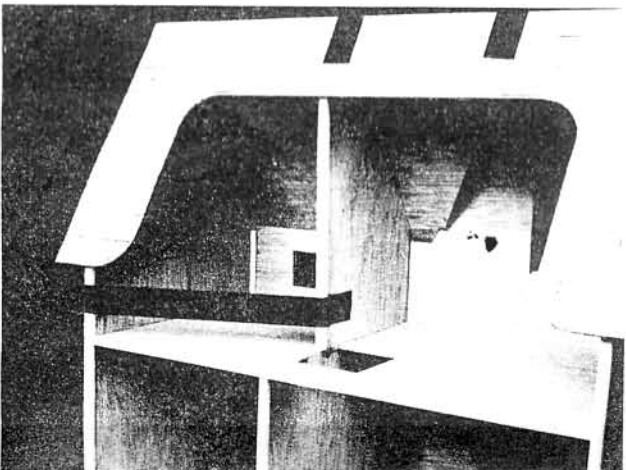
1. We recommend that you use one corner of an empty drawer or square box (see photo). Line the corner of the drawer with wax paper. Place one of the staircase side pieces (CB-2) against one inside wall of the drawer with the bottom against the adjacent side of the drawer. (The bottom of the staircase sides can be identified by measuring the first riser – it should be $\frac{3}{8}$ inch). Stand the other staircase side on its back edge parallel to the first and about $2\frac{1}{2}$ inches away. The bottom of both pieces must be against the inside edge of the drawer to ensure that your staircase is square. Now, starting from the bottom, glue one stair (CB-2, 10 pcs.) on each set of risers making sure that the sides of the stairs are flush with the outside edges of the staircase sides.



2. When the glue from step one has dried, glue the staircase in place against the lower partition as shown.



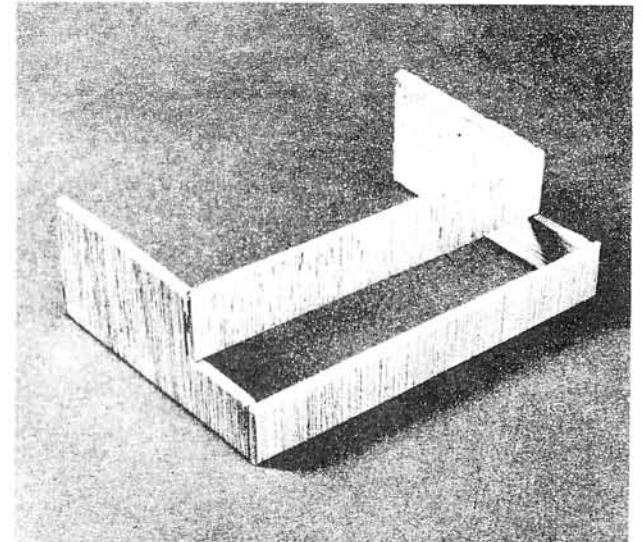
9. Cut one 8-1/16 inch rear trim piece and glue it to the back edge of the first floor partition. (The back edge is the shortest distance from the single top tab). Next, cut a rear trim piece to fit the back edge of the second floor partition. You can angle the top cut as you did with the side wall trim. Cut the bottom end of this piece about $\frac{1}{8}$ inch short so that it does not extend down into the tab at the bottom of the partition. Now glue the two partitions in position making sure the tabs are well seated in the appropriate slots (see photo).



Subassembly No. 3

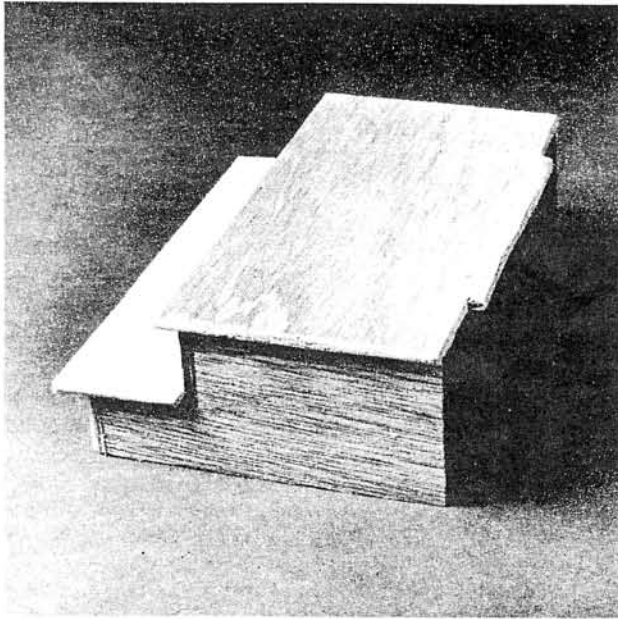
Porch steps.
(Locate all porch parts on sheet CB-5)

1. Glue the step risers in position on the two porch sides as shown.



2. Center the first step and glue it in position.

3. Center the porch top piece and glue it in position so that the back edge is flush with the back edge of the porch side pieces. The large tab on the back edge of the porch top piece should extend beyond the back edge of the porch side pieces.



4. Glue the porch against the front of the house so that the tab enters the doorway and butts against the first floor.

Subassembly No. 4

Universal trim.

1. Cut two pieces of universal trim to fit at the top edge of the lower roof. These pieces should cover the slots where the second floor meets the upper front wall. Cut an angle on the end that fits against the small gable roof.

2. Cut the universal trim to fit and position it horizontally to cover the slots in the side walls and lower front wall. Also cut pieces to fit vertically between the horizontal strips on the side walls. Use the box photo as a guide.

Subassembly No. 5

Shingles.

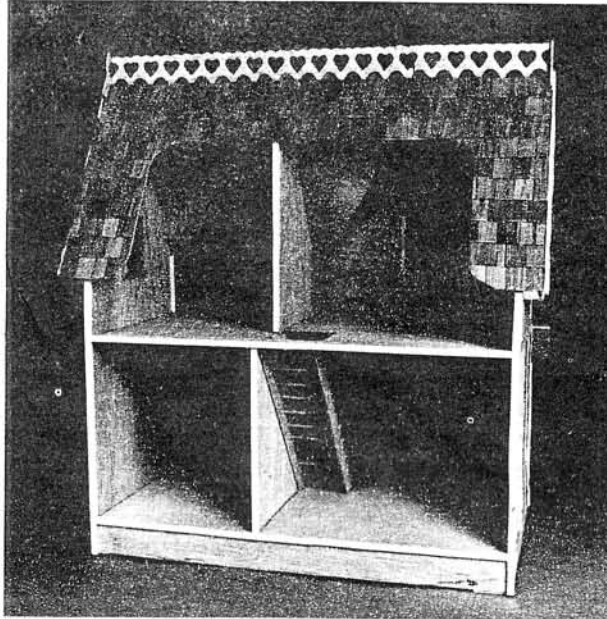
NOTE: DO NOT SKIP THIS STEP thinking that you will return to it later! It is important that the shingles be in place when the roof trim pieces are applied.

Read steps 1, 2, & 3 before starting on the shingles.

1. Apply the shingles on the roof pieces starting from the bottom and working up. Align the top edges of each row of shingles with the lines you drew earlier, and overlap each row over the row below it. The rows should be staggered so that each shingle covers a portion of the TWO shingles below it.

2. In the valleys where adjacent roofs adjoin, you will need to cut shingles at the appropriate angle to fit. A utility knife or sharp kitchen knife will work.

3. The shingles should be flush with the roof sides, but will slightly overhang the bottom edges. On the rear roof, where the roof line is curved, you can overlap the edge of the roof with the shingles and the carefully cut them to conform to the roof line after the glue has thoroughly dried.



Subassembly No. 6

Trim.

NOTE: Use the box photo as a guide when applying the trim.

1. Glue hearts (CB-10) on the shutters.

NOTE: Be VERY careful while removing the hearts from the roof trim so that you do not damage the trim pieces. If the hearts do not release with moderate pressure, try sanding the back of the roof trim. You will sand through the thin layer of uncut wood and make it easy to remove the hearts. Take care, however, not to sand through the veneer.

2. Glue the shutters in position over the window trim.

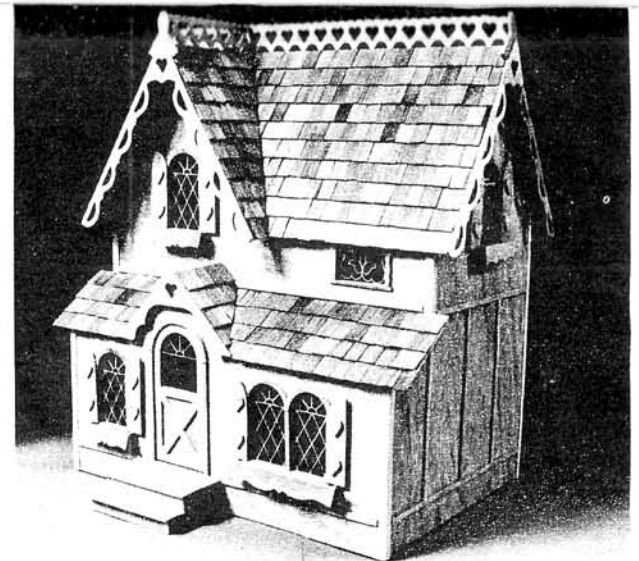
3. Glue the gable peak trim pieces in place (CB-8, 1 pc.; CB-10, 2 pcs. Next glue the gable trim (CB-9, 6 pcs.) in position.

4. Glue the finials (CB-7, 3 pcs.) in position behind the gable peak trim (see box photo).

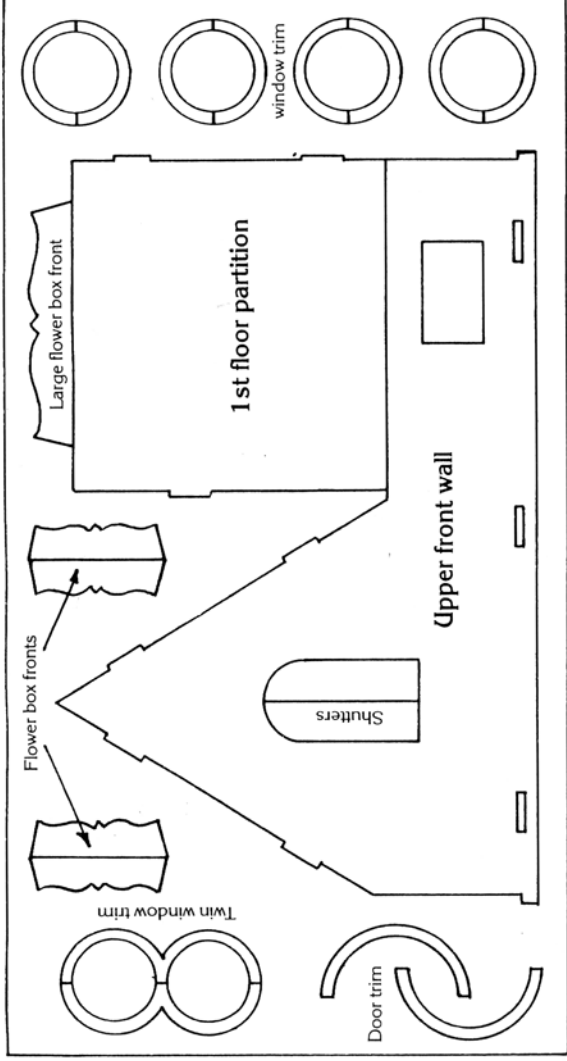
5. Glue the gable roof trim (CB-10) against the gable finial. Then glue the left main roof trim in position (front side facing forward). Finally glue the right main roof trim in position (front side facing forward).

6. Glue the flower box sides (CB-3, 10 pcs.) to the flower box bottom (CB-3, 5 pcs.). It is important that the side pieces be glued to the ends of the bottom piece so that the total length of this assembly equals 2 3/4 inches (small boxes) and 5 1/4 inches (large box). Glue this assembly to the back of the flower box front (CB-1). Position them under the windows as shown.

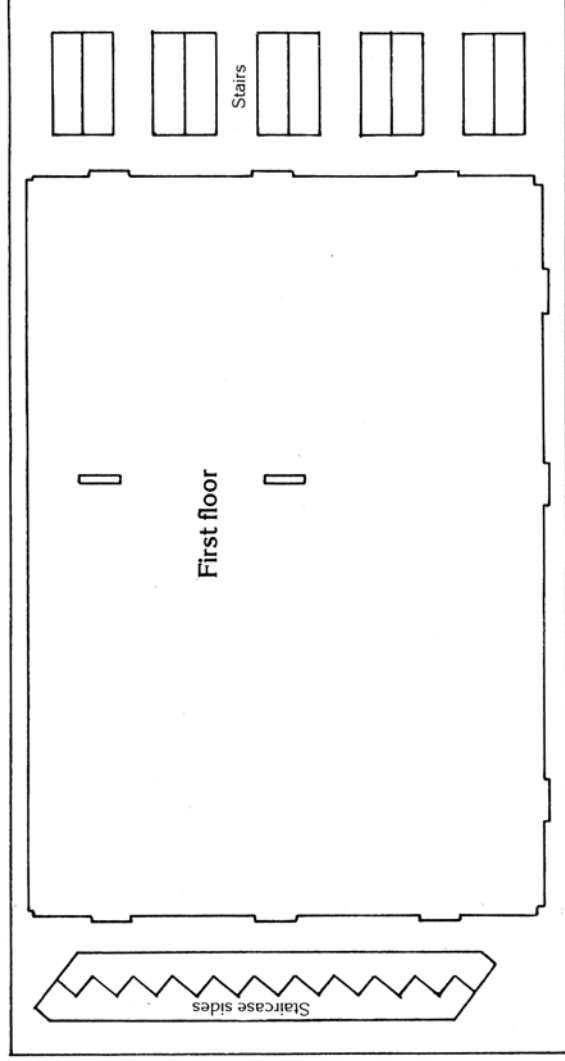
7. Glue the front door in position. If you want the door to swing, hinges are available from your miniature dealer.



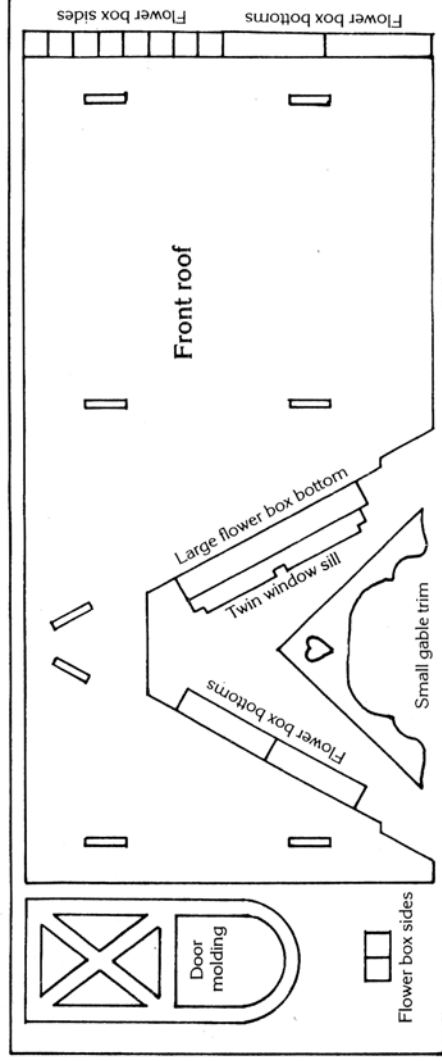
You have completed your miniature house! We know you will have many hours of fun decorating it and showing it off to your friends. If we at Dura-Craft, Inc. can be of any further assistance, please feel free to contact us.



Sheet No. CB-1



Sheet No. CB-2

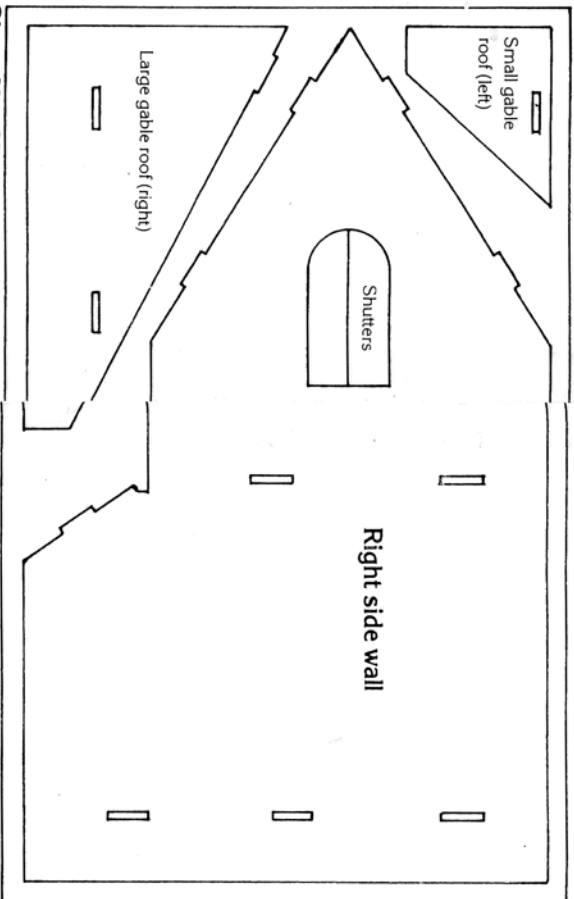


Sheet No. CB-3

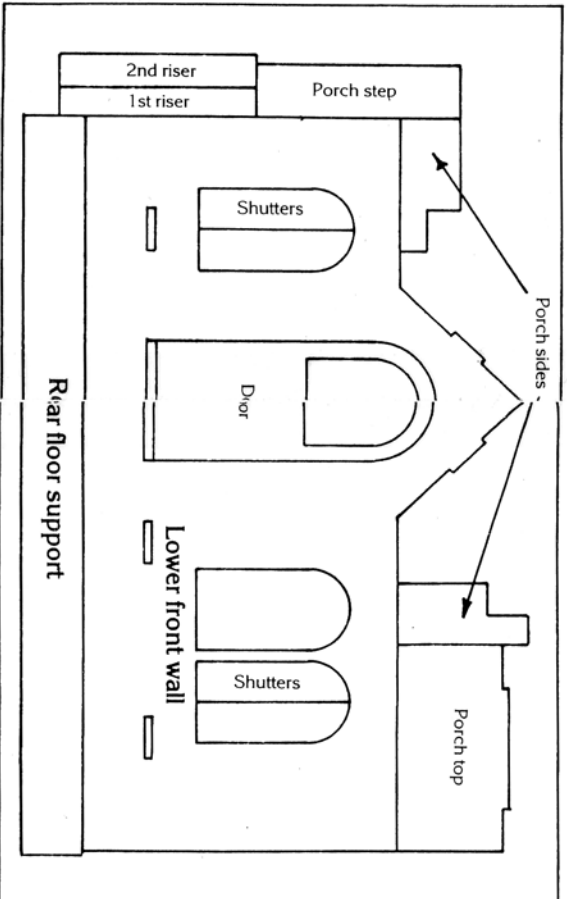
Parts List

CB150 The Columbian

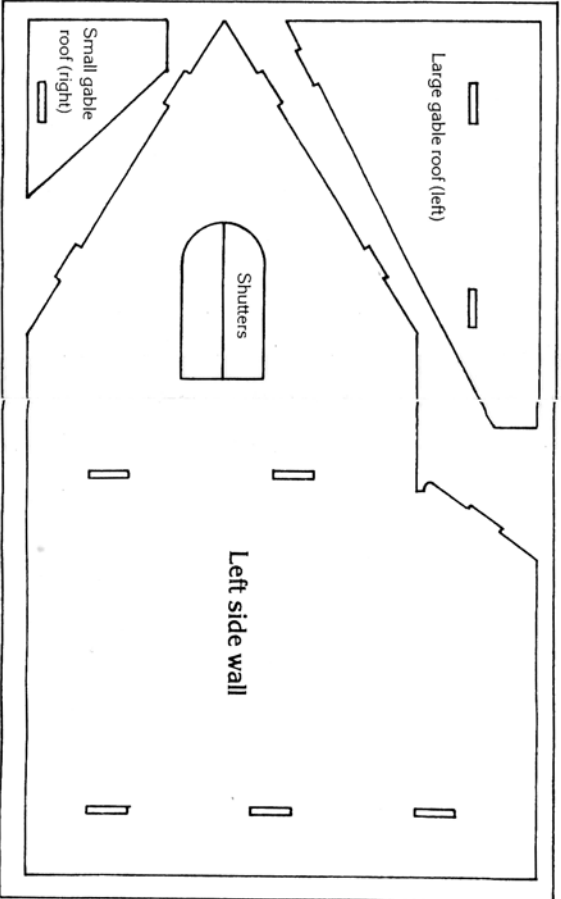
Patent Pending



Sheet No. CB-4



Sheet No. CB-5



Sheet No. CB-6

